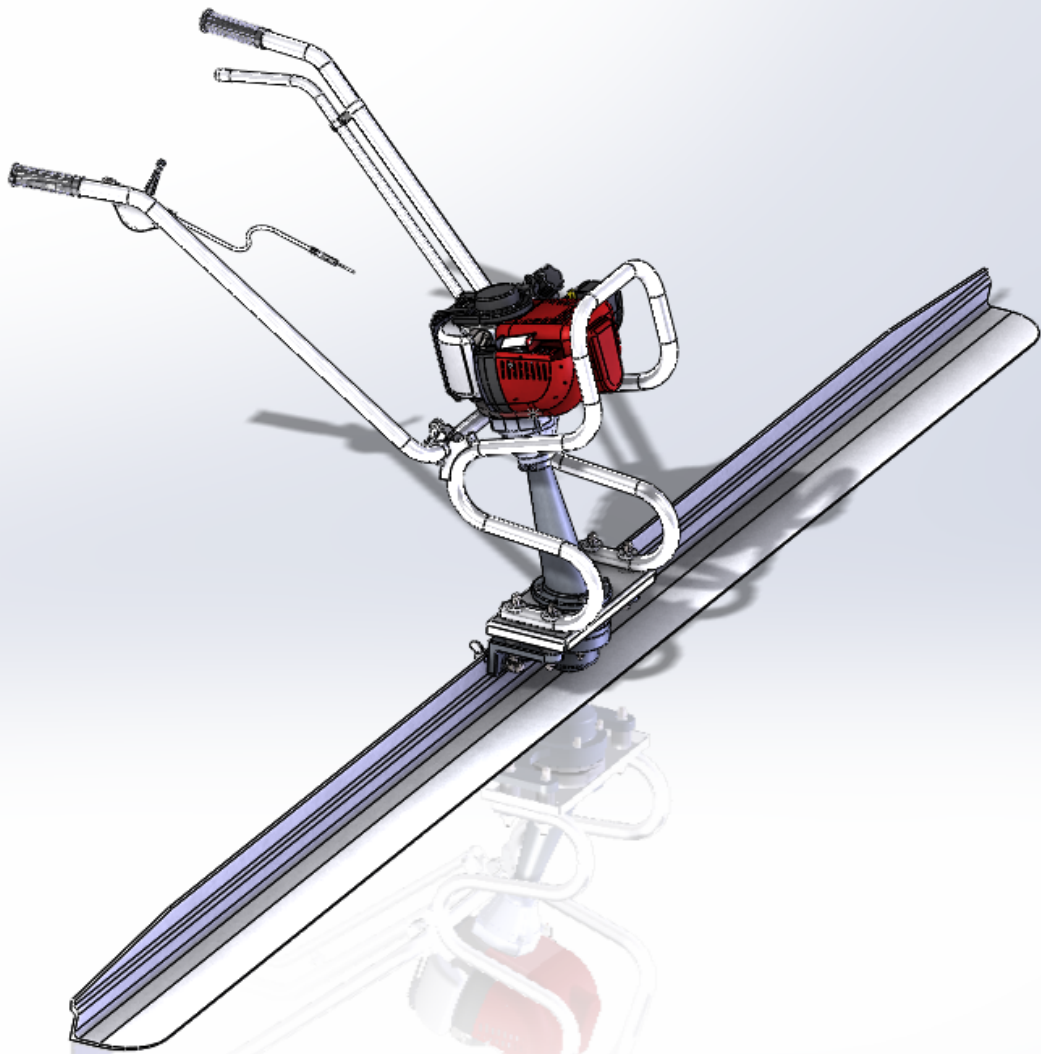




SUPERSCREED -400.00.1000

English



Super Screed Operator's Manual

EC DECLARATION OF CONFORMITY / DECLARATION CE DE CONFORMITE / DECLARACIÓN DE CONFORMIDAD CE / DECLARAÇÃO CE DE CONFORMIDADE

GB/US

We, **Uni-corp Singapore, 20 Ang Mo Kio Industrial Park 2A, #03-02/03 AMK Techlink Singapore 567761**, hereby certify that if the product described within this certificate is bought from an authorised Paclite dealer within the EEA, it conforms to the following directives: Machinery Directive 2006/42/EC, Electromagnetic Compatibility Directive 2004/108/EC (as amended by 92/31/EEC & 93/68 EEC). The physical agent (vibration) conforms with the directive 2002/44/EC. The low voltage directive 2006/95/EC, BS EN ISO 12100-1/2 Safety of machinery and associated harmonised standards, where applicable. Noise emissions conform to directive 2005/88/EC Annex VI), for machines under article 12 the notified body is **TÜV Rheinland Product Safety GmbH - Am Grauen Stein - D-51105 Köln, Germany.**

F

Nous soussignons, **Uni-corp Singapore, 20 Ang Mo Kio Industrial Park 2A, #03-02/03 AMK Techlink Singapore 567761**, certifions que si le produit décrit dans ce certificat est acheté chez un distributeur de la marque déposée "Paclite" au sein de la EEA, celui-ci est conforme aux norms CEE ci-après: Norme de la machine 2006/42/CE, Norme compatible pour l'électromagnétisme 2004/108/CE (modifié par 92/31/CEE et 93/68/CEE). Le nombre de vibrations est en accord avec la directive 2002/44/CE. Caractéristiques basse tension 2006/95/CEE, BS EN ISO 12100-1/2, Norme de sécurité des machines et des critères associés et configurés, si applicable. Les émissions de bruit sont conformes à la directive 2005/88/CE Annexe VI pour machines, article 12. L'objet mentionné est **TÜV Rheinland Product Safety GmbH - Am Grauen Stein - D-51105 Köln, Allemagne.**

E

La Sociedad, **Uni-corp Singapore, 20 Ang Mo Kio Industrial Park 2A, #03-02/03 AMK Techlink Singapore 567761**, por el presente documento certifica que si el producto descrito en este certificado es comprado a un distribuidor autorizado de Paclite en la EEA, este es conforme a las siguientes directivas: 2006/42/CE de la CEE, Directiva 2004/108/CEE sobre Compatibilidad Electromagnética (según enmiendas 92/31/CEE y 93/68 CEE). El numero de vibraciones esta de acuerdo con la Directiva 2002/44/CE. Directiva sobre Bajo Voltaje 2006/95/CEE, BS EN ISO 12100-1/2 de Seguridad de Maquinaria y Niveles armonizados estándares asociados donde sean aplicables. Emisión de Ruidos conforme a la Directiva 2005/88/CE Anexo VI para máquinas bajo articulo 12 la mencionada unidad está **TÜV Rheinland Product Safety GmbH - Am Grauen Stein - D-51105 Köln, Germany.**

P

O signatário, **Uni-corp Singapore, 20 Ang Mo Kio Industrial Park 2A, #03-02/03 AMK Techlink Singapore 567761**, pelo presente, declara que se o produto descrito neste certificado foi adquirido a um distribuidor autorizado do Paclite em qualquer país da EEA, está em conformidade com o estabelecido nas seguintes directivas comunitárias: 2006/42/CE, Directiva de Compatibilidade Electromagnética 2004/108/CEE (conforme corrigido pelas 92/31/EEC & 93/68 EEC). O numero de vibrações está de acordo com a directiva 2002/44/CE LB. A directiva de baixa voltagem 2006/95/CEE, BS EN ISO 12100-1/2 Segurança da maquinaria e às normas harmonizadas afins se aplicáveis. As emissões de ruído respeitam e estão dentro das directivas para máquinas 2005/88/CE Anexo VI, artigo 12, sendo o organismo notificado **TÜV Rheinland Product Safety GmbH - Am Grauen Stein - D-51105 Köln, Germany.**

PRODUCT TYPE.....	TYPE DE PRODUIT....	TIPO DE PRODUCTO..	TIPO DE PRODUCTO..
MODEL.....	MODELE.....	MODELO.....	MODELO.....
SERIAL No.....	Nº DE SERIE.....	Nº DE SERIE.....	Nº DE SÉRIE.....
DATE OF	DATE DE	FECHA DE	DATA DE
MANUFACTURE.....	FABRICATION.....	FABRICACIÓN.....	FABRIC.....
WEIGHT.....	POIDS.....	PESO.....	PESO.....



Signed by:

Quality Manager - On behalf of Uni-corp Singapore PTE Ltd

Anita Tan

CONTENT

1.PREFACE	4
2.INTRODUCTION	5
3.TECHNICAL SPECIFICATIONS	5
4.SAFETY	6
4.1.Safetaspects.....	6
4.2.Safety precautions.....	6
5.USE.....	7
6.MAINTENANCE.....	8
7. PART LISTS	9

1. Preface

This manual has been written to help you operate and maintain the SuperScreed safely. This manual is intended for dealers and operators of SuperScreed and contains useful instructions for use, maintenance and repair. These instructions need to be respected and followed.

Guarantee provisions

All damage to parts of this machine, occurring within 12 months after date of purchase as a consequence of material, production or construction defects, will be replaced by the manufacturer as soon as possible.

The manufacturer declines all responsibility for unsafe situations, accidents and damage caused by:

- Ignoring safety and using instructions as described on the machine or the instruction manual.
- Incompetent or incorrect maintenance.
- Use of the machine by unqualified personnel (employees who are unfamiliar with the content of this instruction manual).
- Storing the machine in a damp place.
- Other use than the prescribed use.
- Cleaning of the machine with a high pressure cleaner or by a water jet under high pressure.
- Alterations of the machine carried out by other than manufacturer. This also includes assembling of nonoriginal parts.

Guarantee certificate

SuperScreed nr: _____

Date of purchase: _____



<input type="checkbox"/>	MODEL	WEIGHT	POWER
	<input type="text"/>	<input type="text"/>	<input type="text"/>
	SERIAL NO.	PRODUCTION DATE (DD.MM.YYYY)	CE 2021
	<input type="text"/>	<input type="text"/>	TÜVRheinland® Precisely Right.
	UNI-CORP EUROPE S.A.R.L. PACLITE EQUIPMENT ZAC LES PETITS CARREAUX 12 AV DES COQUELICOTS 94380 BONNEUIL SUR MARNE FRANCE	+33 (0) 1 4956 0282 +33 (0) 1 4399 1950 sales@paclite-equip.com www.paclite-equip.com	
<input type="checkbox"/>	Please refer to manual for specifications and before operating this Paclite® Equipment		

Fig 1: Ratingplate SuperScreed

The rating plate can be found on the operating handle (under)

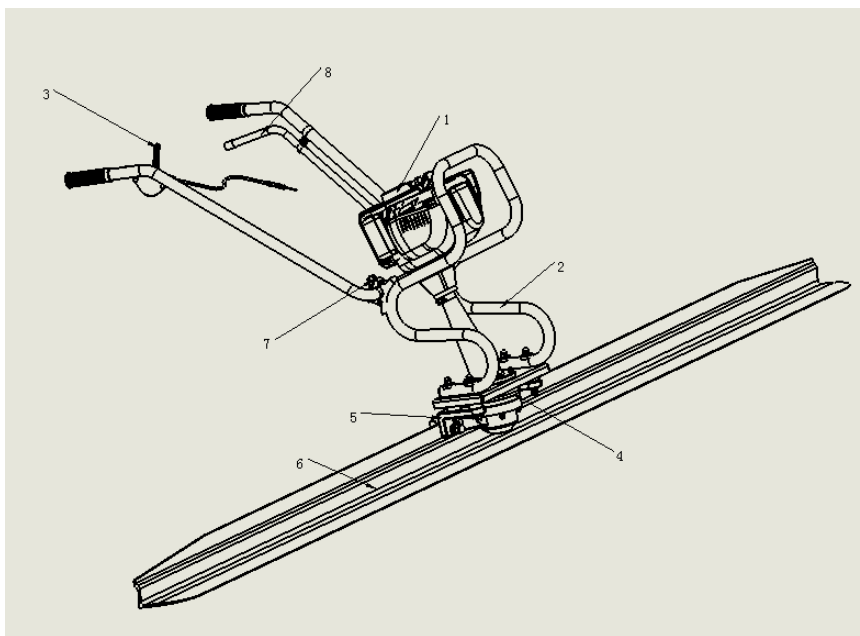
Intended use

The SuperScreed uses a unique reversible blade design which can be used for standard form-to form screeding or wet screeding. It is supplied in 2 components: the blade profile and the power unit. The power-unit consists of a twin handle between which the petrol engine is located. The engine drives, by means of a flexible shaft, the vibrator which is adjustable in 3 positions. The power-unit is equipped with a quick disconnect system, which allows attachment of various blade widths within minutes. With the vibrating alum. Profile of the SuperScreed the top layer of freshly poured concrete is compacted, leveled and smoothed in one operation.

Working

The drive-unit of the SuperScreed (Petrol engine) is started by pulling the recoil-starter of the engine. The vibrating blade of the SuperScreed compacts, levels and smooths freshly poured concrete in one operation. The SuperScreed features a dual purpose blade and can be used for form-to form screeding or for wet screeding. By rotating the power-unit 180 degrees the operator can choose between screeding, using forms/rails, or wet screeding.

Fig.2 overview important components



1. Petrol engine
2. Operating handle
3. Throttle and cable
4. Vibrator
5. Quick (dis)connection system
6. Aluminium blade
7. Lock, adjustable control handle

3.

Code	400.00.10000	400.00.11006ECO
Model	SUPER-SCREED	ECO-SCREED*
Weight (kg)	15,5	15
Engine	Honda GX35	Battery 70 mn - 5 A
Type of engine	Four stroke gasoline air cooling 1 cylinder	PACLITE -EGO innovation
Cylinder (cm ³)	35,8	-
Engine power kW (hp)	1,2 (1,6)	0,5
At (rpm)	7000	7000
Capacity of fuel tank (l)	0,65	-
Consumption of fuel (l/h)	0,6	-
Length (mm)	1117	1117
Width (mm)	889	889
Hand-arm vibration according to ISO 5349 on fresh concrete (m/s ²)	3,1	3,1
Guaranteed sound-power level, LWA dB (A)	83	83
Sound pressure level (at operator's ear) dB (A)	70	70

Table 1:Types of SuperScreed

4. Safety

Explanation of the used safety symbols



1. Read the instruction manual before using the machine.
2. Ear protection compulsory.
3. Safety helmet.
4. Safety glasses.
5. Working gloves with extra protection compulsory.
6. Safety shoes with extra protection.
7. Be careful.
8. Inflammable material.

Fig.3 safety symbols

ENSURE, THAT ALL SYMBOLS ON THE MACHINE, CAN ALWAYS BE CLEARLY READ.

4.1. Safety aspects

The following safety aspects apply to the machine:

- Safety symbols are present on the SuperScreed

4.2. Safety precautions

- Always read the necessary instructions in the manual. If the safety aspects are not clear to you, then ask the manufacturer for an explanation.
- Ensure that you are qualified (familiar with the contents of this manual), to operate and carry out light maintenance-work to the machine when you are operating the machine for the first time.
- Regular maintenance improves safe operation of the SuperScreed.
- Wear a safety helmet, safety glasses, which do not conduct electricity and protective clothing.
- On working areas, take notice and follow general and local safety regulations. Before starting your work, make sure that you are informed about all safety regulations and instructions.

The following safety-aspects specifically apply to machines equipped with a petrol engine.

- When the machine is not being used for longer periods of time, then it must be stored in a dry and clean area.
- Make sure that there is sufficient ventilation in spaces which are surrounded by walls.
- Never inhale exhaust gasses, they can damage your health and that of your colleagues.
- To avoid getting an electric shock, do not touch the high-tension cable or spark plug cap while the engine is running.
- Check for fuel leaks before running the machine.
- Do wear working-gloves, safety glasses and protecting clothing during refilling of fuel.
- Make sure that there is sufficient ventilation during refilling fuel.
- Refilling fuel is only allowed after the engine has been cooled off sufficiently.
- Refilling fuel while the engine is hot might lead to a very dangerous situation
- Refilling fuel is prohibited in the direct vicinity of open fire, during cigarettes, a heat source and in explosion dangerous areas.
- Do not smoke during refilling fuel.

5. Use

READ THE MANUAL CAREFULLY BEFORE USE. IF ASPECTS ARE NOT CLEAR TO YOU, CONTACT YOUR DEALER OF THE SUPPLIER..

For the location and description of the SuperScreed's parts, which are mentioned in the text, we refer to the illustration figure 2 in this manual.

5.1. Assembling the SuperScreed

- a) First determine whether you want to use the **SuperScreed** as a form-to form screeder or as a wet screeder.
- b) **SuperScreed** is supplied in 2 components: the power-unit and the blade profile.
- c) The power-unit is equipped with a quick connection system, for easy mounting of the power-unit onto the blade profile.
- d) TO connect the power-unit to screed blade according to the figure 4, must be tight the lock nut.
- e) Now unfold the twin control handle, adjust it to the proper height, and tighten the 2 clamps.
- f) Make sure that the **SuperScreed** is properly assembled and that the **ON-OFF** switch is in the ON position. Make sure that the fuel tank is filled (NO FUEL MIX).
- g) In case the **SuperScreed** is used for form-to form screeding make sure that the rail supports are set to the right level.

1. Screed blade
2. Plate
3. Locating sleeve
4. Big plain washer
5. Lock nut

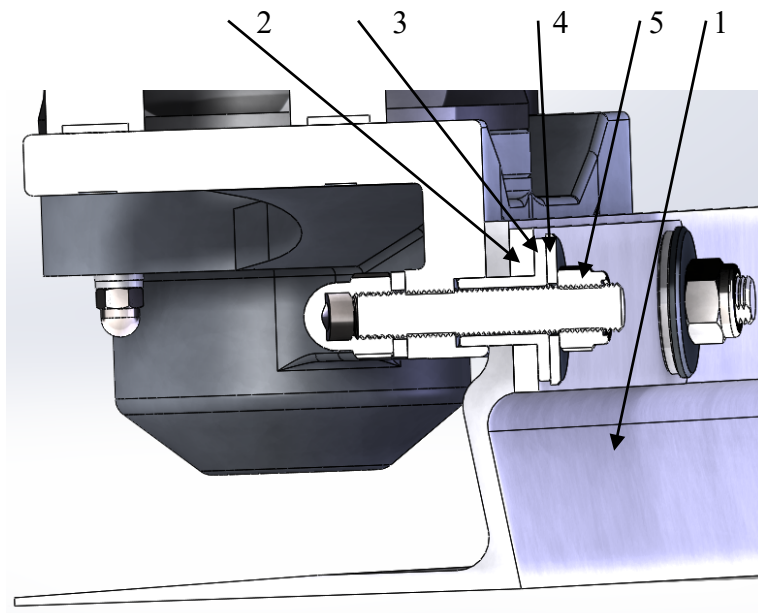


Fig.4 Quick connection system

5.2 Operation and use of SuperScreed.

1) Place the SuperScreed blade on the rail supports or in case you want to use the SuperScreed as a wet screed, directly on the freshly poured concrete surface. Careful: before starting the petrol engine read the enclosed operation instructions carefully. Make sure before starting that the ON-OFF switch is in the ON position.

2) Now start the engine. Use the throttle handle to adjust the desired engine speed. After setting the engine speed start moving the SuperScreed backwards, the travel speed depends on the consistency of the concrete.

3) After use, clean the SuperScreed according to the instructions described in chapter 4 of this manual. Place the SuperScreed on a dry, clean and stable surface.

4) If you do not expect to use the engine for a long period of time the fuel tank needs to be empty. Start the engine and let the engine run at idle speed until the fuel in the carburetor is used and the engine stops.

5) Make sure to refill the fuel tank in time. Do not let the engine run until all the fuel is used. This might cause starting problems.

6. Maintenance

Although this machine has a few moving parts, regular maintenance promotes a long and trouble-free life.

6.1. Maintenance

ONLY QUALIFIED PERSONNEL, FAMILIAR WITH THE CONTENTS OF THIS OPERATION MANUAL, ARE ALLOWED TO CARRY OUT MAINTENANCE AND REPAIR JOBS TO THE SuperScreed

ATTENTION: CONCRETE REMNANTS COULD DAMAGE THE QUICK CONNECTION. REMOVE CONCRETE REMNANTS FROM THE BLADE AND CONNECTION SYSTEM BEFORE THEY HARDEN OUT. THEY COULD EASILY INJURE THE OPERATOR.

WARNING: DO NOT CLEAN THE SuperScreed WITH A HIGH PRESSURE CLEANER.

6.2 Cleaning and maintenance of the SuperScreed with Petrol engine.

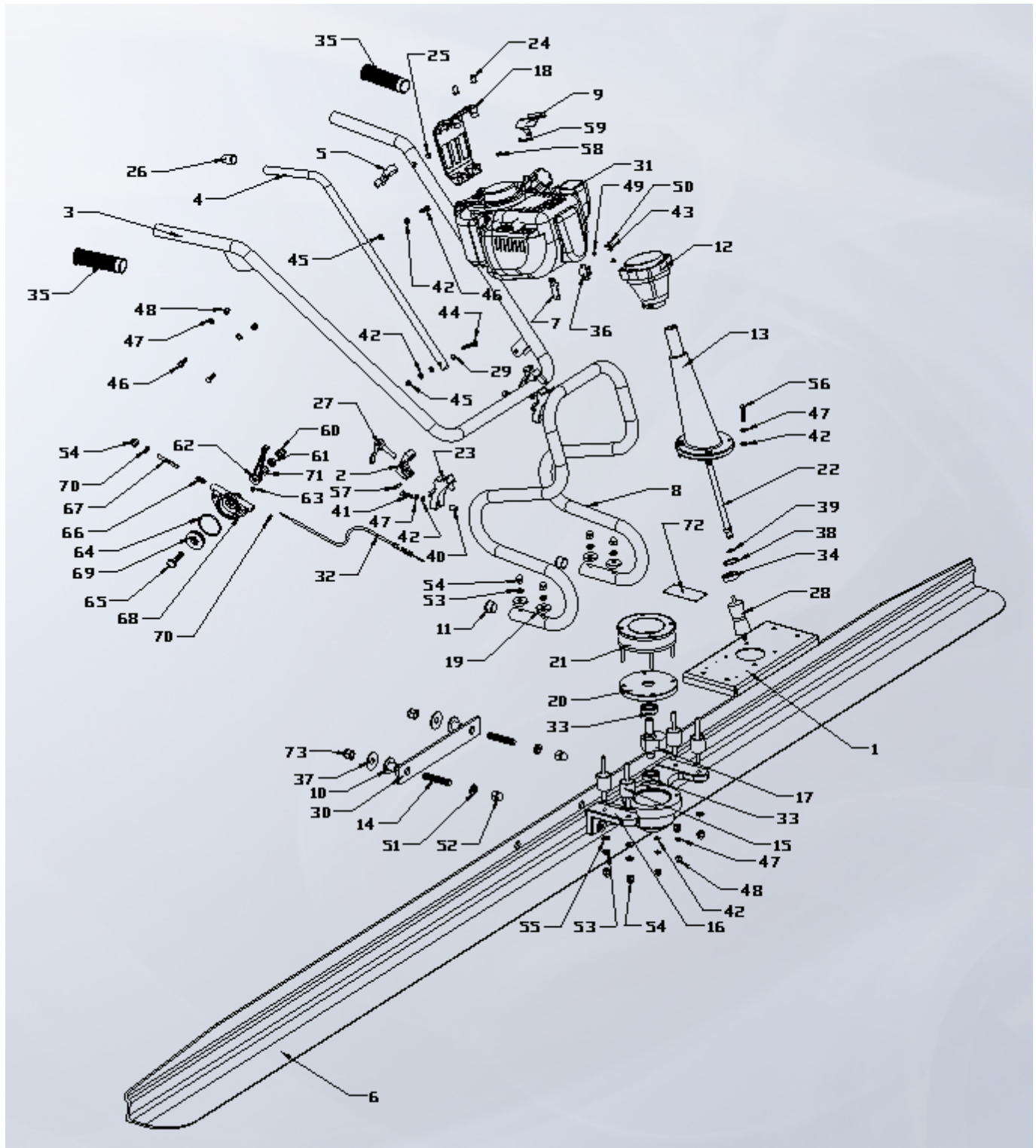
Daily maintenance:

In order to achieve a maximum cooling effect the ventilation opening must stay free from dirt, grease and concrete. Check them at the end of each working day. If necessary clean them with a brush or a damp cloth.

TIP: FOR DETAILED SERVICING INSTRUCTIONS PLEASE READ THE OPERATION INSTRUCTIONS SUPPLIED BY THE MANUFACTURER OF THE HONDA PETROL ENGINE.

7. Part lists

7.1. SuperScreed with petrol Engine




NO.	PART NO.	PART DESCRIPTION	QTY
1	HCS50-0100	BOTTOM PLATE	1
2	HCS50-0200	PRESS BUTTON	2
3	HCS50-0300	HANDLE	1
4	HCS50-0400	FEET	1
5	HCS50-0500	HOOP	1
6	HCS50-0600	SCREED BLADE	1
	HCS50-0600.1	SCREED BLADE	
	HCS50-0600.2	SCREED BLADE	
	HCS50-0600.3	SCREED BLADE	
7	HCS50-0700	SWITCH PLATE	1
8	HCS50-0800	PROTECTIVE FRAME	1
9	HCS50-0900	COVER PLATE	1
10	HCS50-1000	NYLON SLEEVE	2
11	HCS50-1100	PLUG	2
12	HCS50-1200	CLUTCH ASSEMBLY	1
13	HCS50-1300	DRIVER SHAFT HOISING	1
14	HCS50-1400	CONNECTING SCREW	2
15	HCS50-1500	VIBBRATION DAMPER	4
16	HCS50-1600	VIBRATION BRACKET	1
17	HCS50-1700	ECCENTRIC SHAFT	1
18	HCS50-1800	TANK PROTECTION PLATE	1
19	HCS50-1900	ARC WASHER	4
20	HCS50-2000	FLANGE	1
21	HCS50-2100	VIBBRATION DAMPER	1
22	HCS50-2200	DRIVER SHAFT	1
23	HCS50-2300	PRESS BUTTON	2
24	HCS50-2400	INSERT	2
25	HCS50-2500	INSERT	2
26	HCS50-2600	MAT	1
27	HCS50-2700	LOCK HANDLE	2
28	HCS50-2800	ABSORBER CONNECT	1
29	HCS50-2900	WAVE SPRING	2
30	HCS50-3000	FLITCH	1
31	HCS50-W05-GX35T SDL	ENGINE	1
32	HCS50-W06-2S04-L990x1075	BRAKE CABLE	1
33	HCS50-W01-6202ZZ-J	BEARING	2
34	HCS50-W01-6201ZZ-J	BEARING	1
35	HCS50-HRT168-048354	GLOVES	2
36	HCS50-066-00004-80	SCRAM SWITCH	1
37	HCS50-WOD. W12-GB-2	WASHER	2
38	HCS50-CH. RG32	INTERNAL CIRCLIP	1
39	HCS50-CS. RG12	EXTERNAL CIRCLIP	1
40	HCS50-NUTSERT-M6X15-1	PULL RIVETING NUT	4
41	HCS50-HS. B-M6x20-8. 8-GB-2	SCREW	4
42	HCS50-FN. W6-DIN-2	WASHER	16
43	HCS50-PAN. S-M4x6	PAN HEAD SCREW	2
44	HCS50-FN. B-M6x35-8. 8-DIN-2	BOLT	1
45	HCS50-IN. N-M6-DIN-2	LOCK NUT	2
46	HCS50-FN. B-M6x20-8. 8-DIN-2	BOLT	3


NO.	PART NO.	PART DESCRIPTION	QTY
47	HCS50-HSPG. W6-DIN-2	SPRING WASHER, TANG ENDS	14
48	HCS50-HC. N-M6-DIN-2	CAP NUT	6
49	HCS50-SPG. W5-DIN-2	SPRING WASHER	1
50	HCS50-HS. B-M5x10-8. 8-GB-1	SCREW	1
51	HCS50-HSPG. W12-DIN-2	SPRING WASHER, TANG ENDS	2
52	HCS50-HC. N-M12-DIN-2	CAP NUT	2
53	HCS50-HSPG. W8-DIN-2	SPRING WASHER, TANG ENDS	8
54	HCS50-HC. N-M8-DIN-2	CAP NUT	9
55	HCS50-FN. W8-DIN-2	WASHER	4
56	HCS50-FN. B-M6x30-8. 8-DIN-2	BOLT	4
57	HCS50-SC. PIN-6x22-GB-3	SPRING PIN	2
58	HCS50-PAN. S-M4x10	PAN HEAD SCREW	1
59	HCS50-FN. W4-DIN-2	WASHER	1
60	HCS50-HC. N-M10-DIN-2	CAP NUT	1
61	HCS50-FNL. N-M10-DIN-2	HEXAGON THIN NUT	1
62	HCS50-RAM7OND-060000	THROTTLE LEVER	1
63	HCS50-FHSS. S-M6x8-GB-3	SOCKET SCREW WITH FLAT HEAD	1
64	HCS50-W04-45x3	O-RING	1
65	HCS50-RAM7OND-060003	BOLT	1
66	HCS50-FHSS. S-M8x20-GB-3	SOCKET SCREW WITH FLAT HEAD	1
67	HCS50-RAM7OND-060004	SLIDER	1
68	HCS50-RAM7OND-060001	THROTTLE BODY	1
69	HCS50-RAM7OND-060002	THROTTLE GEAR	1
70	HCS50-FNL. N-M8-DIN-2	HEXAGON THIN NUT	2
71	HCS50-FN. W10-DIN-2	WASHER	2
72	HCS50-D4-MP-E	NAME PLATE	1
73	HCS50-IN. N-M12-DIN-2	LOCK NUT	2




PACLITE EQUIPMENT

ZAC DES PETITS CARREAUX 12 AVENUE
DES COQUELICOTS 94380 BONNEUIL
SUR MARNE

 +33 | 49560282

 +33 | 43991950

 sales@paclite-equip.com

 www.paclite-equip.com

