



PORTAVIB 38 / PORTAVIB 45

Réf. Porta-38H

Réf. Porta-45H

PORTABLE VIBRATOR (ECCENTRIC TYPE)

4-Stroke Petrol
Internal Vibrator



Operator's Manual

Spare Parts

PORTAVIB 45 / PORTAVIB 38

1. Safety Information	2
1.1 Operating Safety	3
2. Technical Data	6
2.1 Motor	6
2.2 Vibrator head & Flexible shafts	6
3. Operation	7
3.1 Applications	7
3.2 Assembling Head, Motor and Shaft	8
3.3 Operation	9
4. Maintenance	10
4.1 Maintenance Schedule.....	10
4.2 Engine Operation & Maintenance	11
4.3 Lubricating Shaft	12
4.4 Lubricating PORTAVIB 45 Head	13
5. PORTAVIB 45 Parts	14
5.1 PORTAVIB 45 PARTS	14
5.2 PORTAVIB 45 LIST	15
6. PORTAVIB 38 Parts	16
6.1 PORTAVIB 38 PARTS	16
6.2 PORTAVIB 38 LIST	17

1. Safety Information.

This manual contains DANGER, WARNING, CAUTION, and NOTE callouts which must be followed to reduce the possibility of personal injury, damage to the equipment, or improper service.



This is the safety alert symbol. It is used to alert you to potential personal injury hazards. Obey all safety messages that follow this symbol to avoid possible injury or death.



DANGER

DANGER indicates an imminently hazardous situation which, if not avoided, will result in death or serious injury.



WARNING

WARNING indicates a potentially hazardous situation which, if not avoided, could result in death or serious injury.



CAUTION

CAUTION indicates a potentially hazardous situation which, if not avoided, may result in minor or moderate injury.

CAUTION: Used without the safety alert symbol, CAUTION indicates a potentially hazardous situation which, if not avoided, may result in property damage.

Note: Contains additional information important to a procedure.

1.1 Operating Safety.



Familiarity and proper training are required for the safe operation of equipment. Equipment operated improperly or by untrained personnel can be dangerous. Read the operating instructions contained in both this manual and the engine manual and familiarize yourself with the location and proper use of all controls. Inexperienced operators should receive instruction from someone familiar with the equipment before being allowed to operate the machine.

- 1.1.1 NEVER operate this machine in applications for which it is not intended.
- 1.1.2 NEVER allow anyone to operate this equipment without proper training. People operating this equipment must be familiar with the risks and hazards associated with it.
- 1.1.3 NEVER touch the engine or muffler while the engine is on or immediately after it has been turned off. These areas get hot and may cause burns.
- 1.1.4 NEVER use accessories or attachments that are not recommended by PACLITE. Damage to equipment and injury to the user may result.
- 1.1.5 NEVER leave machine running unattended.
- 1.1.6 NEVER tamper with or disable the function of operating controls.
- 1.1.7 NEVER use choke to stop engine.
- 1.1.8 NEVER operate the machine in areas where explosions may occur.
- 1.1.9 ALWAYS read, understand, and follow procedures in the Operator's Manual before attempting to operate the equipment.
- 1.1.10 ALWAYS be sure that all other persons are at a safe distance from the machine. Stop the machine if people step into the working area of the machine.
- 1.1.11 ALWAYS be sure operator is familiar with proper safety precautions and operation techniques before using machine.
- 1.1.12 ALWAYS wear protective clothing appropriate to the job site when operating equipment.
- 1.1.13 ALWAYS wear hearing protection when operating equipment.
- 1.1.14 ALWAYS keep hands, feet, and loose clothing away from moving parts of the machine.
- 1.1.15 ALWAYS use common sense and caution when operating the machine.
- 1.1.16 ALWAYS be sure the PORTAVIB 45 will not tip over, roll, slide, or fall when not being operated.
- 1.1.17 ALWAYS turn the engine OFF when the PORTAVIB 45 is not being operated.

Operating Safety continue.

- 1.1.18 ALWAYS guide the PORTAVIB 45 in such a way that the operator will not trip or fall. Special care is required when standing on un-even ground or on reinforcement bars. Make sure to stand firmly when operating the machine under such conditions.
- 1.1.19 ALWAYS store the equipment properly when it is not being used. Equipment should be stored in a clean, dry location out of the reach of children.
- 1.1.20 ALWAYS close fuel valve on engines equipped with one when machine is not being operated.
- 1.1.21 ALWAYS operate machine with all safety devices and guards in place and in working order. DO NOT modify or defeat safety devices. DO NOT operate machine if any safety devices or guards are missing or inoperative.
- 1.1.22 Keep work area clean and free of clutter.
- 1.1.23 ALWAYS keep work area well lit.
- 1.1.24 NEVER attach vibrator shaft to motor while it is running.
- 1.1.25 NEVER operate motor in areas exposed to flammable or explosive liquids or gases!
- 1.1.26 NEVER overreach. Keep proper footing and balance at all times. Make sure any supporting structures are strong enough and stable enough to support your weight and the weight of any equipment on it.
- 1.1.27 ALWAYS remain aware of moving parts and keep hands, feet, and loose clothing away from moving parts of equipment.
- 1.1.28 ALWAYS wear protective clothing appropriate to the job site when operating equipment.

Operating Safety continue.

- 1.1.29 Goggles or safety glasses will protect against eye damage caused by flying debris & splashing concrete.
- 1.1.30 Keep handle, and other areas where motor and shaft are gripped, dry, clean and free from oil, grease and concrete.
- 1.1.31 NEVER operate machine when you are tired. Remain alert, watch what you are doing and use common sense.
- 1.1.32 NEVER operate machine if it does not function properly.
- 1.1.33 ALWAYS replace worn or damaged components with spare parts designed and recommended by PACLITE.
- 1.1.34 DO NOT allow untrained personnel to service this equipment.

2. Technical data.

2.1. Motor.

Make	Honda
Engine model	GX35
Engine type	4-stroke, overhead valve, 1 cylinder
Displacement	35.8 cm ³
Bore X Stroke	39 mmX30mm
Max. Output	1.2 Kw (1.6ps)/7,000 rpm
Max. Torque	1.9 N.m (0.19 kg.m) /5,500 rmp
Fuel consumption	360 g/kWh (265 g/PSh)
Cooling System	Forced air
Ignition system	Transistor Magneto
Oil capacity	0.1 L
Fuel tank capacity	0.65 L
Spark Plug	NGK: CMR5H
Hand-Arm-Vibration (HAV)	1.4 m/s ² / Measured to EN500-4
Sound pressure level dB (A)	65
	@ 9000 rpm

2.2. Vibrator head & Flexible shafts.

	PORTAVIB 45	PORTAVIB 38	--
Diameter mm	45	38	-
Vibrator Head Length mm	360	340	--
Weight kg	12	10.5	-
Flexible Shaft Length mm	512	512	-
Lubrication	30 ml SAE BOW-140 Synthetic.		

NOTE:

Specifications may vary according to the type, and are subject to change without notice

3. Operation.

3.1 Applications.

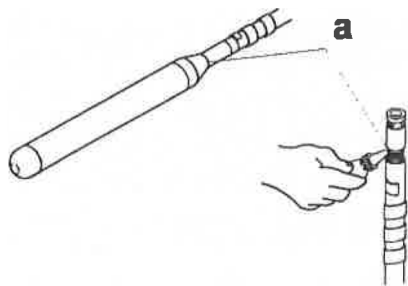
Power independent on-site vibration of concrete for foundations, footings, waffle pod slabs, steps, patios, driveways, stairs, car parks, etc



3.2. Assembling Head, Motor and Shaft.

See Graphic: below

- 3.2.1 Apply pipe sealant to threads on head (a). Attach head onto end of flexshaft (left hand thread) and tighten using a wrench.
- 3.2.2 The shaft is attached to motor using a quick disconnect coupler.
- 3.2.3 Lubricate flexible shaft core. See Lubricating Flexible Shaft.
- 3.2.4 To attach shaft to motor, remove grub screw at the end of the shaft. Slide motor shaft & flexible shaft together. Replace grub screw & tighten.



3.3 Operation.

Hold head in air or place it on soft surface when starting motor. This will prevent it from bouncing on hard surfaces which could damage bearings. During use, insert the head quickly into the mix and then pull it out slowly. Rapid removal is the main cause of poor concrete consolidation. For best results submerge head completely and try to establish a symmetrical pattern for inserting and removing the head.

Avoid sharp bends in the shaft. This can create hot spots.

When moving around jobsite do not drag head and shaft on ground.

Avoid touching forms and rebars when inserting head in mix. This can transmit vibration to other areas of the mix which may already be setting.

CAUTION: DO NOT run the motor with the head out of the mix for long periods of time. This can cause the bearings to overheat.

4. Maintenance.

4.1. Maintenance schedule.

REGULAR SERVICE PERIOD (3) Perform at every indicated month or operating hour interval, whichever comes first		Before each use	First Month or 10 Hrs	Every 3 Month or 25 Hrs	Every 6 Month or 50 Hrs	Every 12 Month or 100 Hrs	Every 24 Month or 300 Hrs
ITEM							
Engine oil	Check	0					
	Change		0		0		
Air Filter	Check	0					
	Clean			0 (1)			
Nuts, bolts, fasteners (Re-tighten if necessary)	Check	0					
Shoulder harness quick-release	Check	0					
Throttle cable	Check	0					
Gear case	Lubricate				0 (2)		
Clutch shoes & drum	Check				0 (2)		
<i>Spark plug</i>	Check-Adjust					0	
	Replace						0
Engine cooling fins	Check				0		
Idle speed	Check-Adjust					0 (2)	
Valve clearance	Check-Adjust					0 (2)	
Combustion chamber	Clean						
Fuel tank strainer	Check					0	
Fuel tank	Clean					0	
Fuel line	Replace						0 (2)
Clean & lubricate core & shaft				0			
Change oil in H-head							0

NOTE:

- (1) Service more frequently when used in dusty areas.
- (2) These items should be serviced by your servicing dealer, unless you have the proper tools & are mechanically proficient. Refer to Honda shop manual for service procedures.
- (3) Log hours of operation to determine proper maintenance intervals.

4.2. Engine Operation & maintenance.

See separate Honda Engine Manual provided.

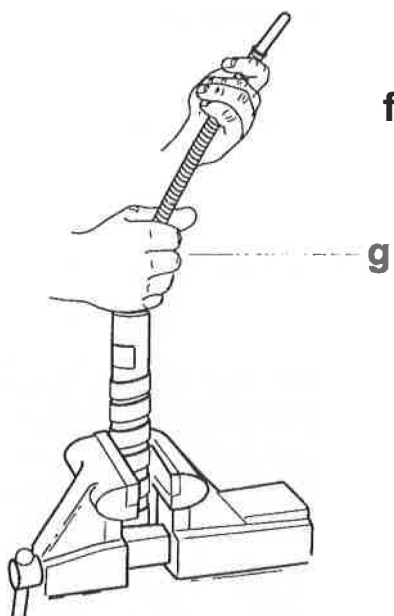
4.3. Lubricating Shaft.

See Graphic below.

Remove wire core (f) from flexible shaft casing and wipe with a clean cloth. Apply a liberal amount of High Temperature Grease to the entire length of the core by hand (g). Insert core into casing and rotate it. Repeat this procedure several times.

CAUTION: DO NOT try to force the casing full of grease. A tightly packed casing will put a heavy load on the motor and could cause it to overheat.

CAUTION: DO NOT clean casing or core with solvents. Excess solvent on casing or core may cause grease to break down, resulting in damage to shaft.



4.4. Lubricating PORTAVIB 45 Head.

See Graphic below.

The bearings in the head are lubricated with oil. To extend bearing life, change oil in head every 300 hours of operation.

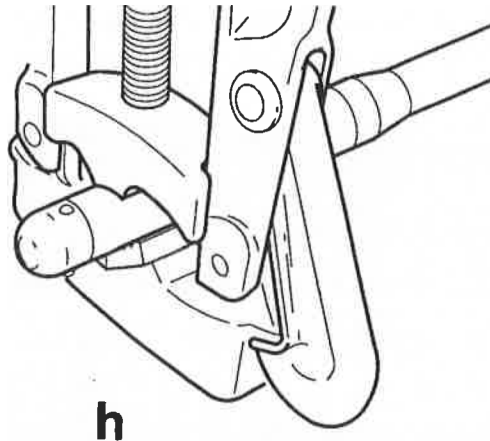
To change oil:

Place head in a vise and remove tip from casing. If necessary, add a couple of small spot welds (h) on tip to provide a better grip for wrench. Drain old oil from casing and add 30 ml of new oil. Apply pipe sealant to threads on tip and attach it tightly on casing.

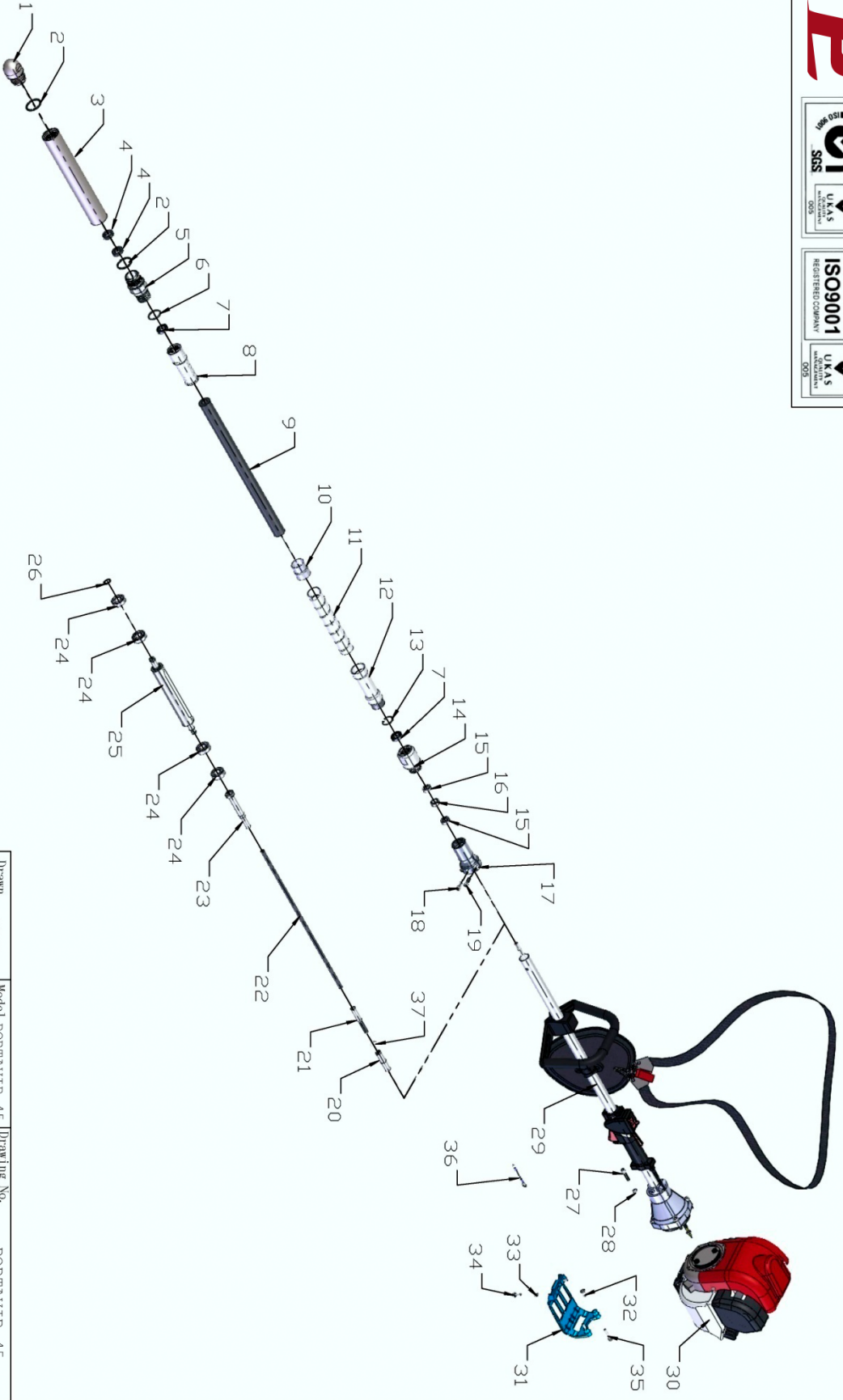
Note: In the interests of environmental protection, place a plastic sheet and a container under the machine to collect any liquid which drains off. Dispose of this liquid in accordance with environmental protection legislation.

Use only SAE 80W140 synthetic oil or equivalent.

CAUTION: DO NOT overfill. Too much oil in the head will overload the motor.



5. Parts.



Drawn	W.L.J	Model	PORTAVIB 45	Drawing No.	PORTAVIB 45
Checked		Description	Portable Vibrator (eccentric type)		
Approved		Date	2013. 10. 31		

PARTS LIST

PORTAVIB 45 PORTABLE VIBRATOR (ECCENTRIC TYPE)

NO.	PART NO.	PART DESCRIPTION	MATERIAL SPECIFICATION	QTY	REMARKS
1	PVE45-0101	VIBRATOR HEAD	AISI-4140	1	
2	PVE45-W04-33.5×3.5	O RING	33.5×3.5	2	
3	PVE45-0102	VIBRATOR BODY	45#	1	
4	PVE45-W03-28x16x7	OIL SEAL	28x16x7	2	
5	PVE45-0103	CONNECTOR	Q235	1	
6	PVE45-W04-28x3	O RING	28x3	1	
7	PVE45-W01-6902ZZ-J	BEARING	NSK 6902ZZ-J	2	
8	PVE45-0106	HOSE JOINT B	20#	1	
9	PVE45-W24-30x450-5	FLEXIBLE HOSE	30x450mm-5	1	
10	PVE45-VIBGA-0832	END CLIP	20#	1	
11	PVE45-VIBG-0815	PROTECTOR SPRING	65Mn	1	
12	PVE45-VIB38-0106	HOSE JOINT A	20#	1	
13	PVE45-CH.RG28	INTERNAL CIRCLIP	28	1	
14	PVE45-0201	HOSE JOINT D	20#	1	
15	PVE45-W01-608ZZ-J	BEARING	608ZZ (NSK)	2	
16	PVE45-0203	WASHER	Q235	1	
17	PVE45-0202	Connected sets	6061-T6 (SS)	1	
18	PVE45-HS.B-M6x16-8.8-GB-1	SCREW	M6x16	1	GB70.1-2000
19	PVE45-HS.B-M6x20-8.8-GB-1	SCREW	M6x20	2	GB70.1-2000
20	PVE45-0204	Connecting shaft	45#	1	
21	PVE45-0107	DRIVING SHAFT	45#	1	
22	PVE45-W25-10x470	FLEXIBLE SHAFT	10x470	1	
23	PVE45-0105	SHAFT JOINT	Q235	1	
24	PVE45-W01-6202-J	BEARING	NSK 6202	4	
25	PVE45-0104	VIBRATOR SHAFT	Q235	1	
26	PVE45-CS.RG15	EXTERNAL CIRCLIP	15	1	GB894.1-86
27	PVE45-HS.B-M6x30-8.8-GB-1	SCREW	M6x30	4	GB70.1-2000
28	PVE45-HSPG.W6-DIN-1	SPRING WASHER,TANG ENDS	M6	4	DIN127-A
29	PVE45-0900	Cut rod ASSY		1	
30	PVE45-W05-GX35T SDL	ENGINE	GX35	1	HONDA
31	HCS50-1800	TANK PROTECTION PLATE	PE	1	
32	HCS50-2400	INSERT	Q235	2	
33	HCS50-2500	INSERT	Q235	2	
34	PVE45-FSH.S-M5×16-12.9-DIN-3	SCREW	M5×16	2	
35	PVE45-FSH.S-M5×30-12.9-DIN-3	SCREW	M5×30	2	
36	PVE45-0800	WIRE		1	
37	PVE45-SS.RG16	EXTERNAL CIRCLIP		1	GB895.2-86

6. Parts.

Drawn	W.L.J	Model	PORTAVIB 38	Drawing No.	PORTAVIB 38
Checked		Description	Portable Vibrator (Eccentric type)		
Approved		Date	2014.05.13		



PARTS LIST

PORTAVIB 38 PORTABLE VIBRATOR (ECCENTRIC TYPE)

NO.	PART NO.	PART DESCRIPTION	MATERIAL SPECIFICATION	QTY	REMARKS
1	PVE38-0101	VIBRATOR HEAD	AISI-4140	1	
2	PVE38-W04-28x3	O RING	28x3	3	
3	PVE38-0102	VIBRATOR BODY	45#	1	
4	PVE38-W03-26x15x7	OIL SEAL	26x15x7	2	
5	PVE38-0103	CONNECTOR	Q235	1	
6	PVE38-W01-6902ZZ-J	BEARING	NSK 6902ZZ-J	2	
7	PVE45-0106	HOSE JOINT B	20#	1	
8	PVE38-W24-30x450-5	FLEXIBLE HOSE	30x450mm-5	1	
9	PVE38-VIBGA-0832	END CLIP	20#	1	
10	PVE38-VIBG-0815	PROTECTOR SPRING	65Mn	1	
11	PVE38-VIB38-0106	HOSE JOINT A	20#	1	
12	PVE38-CH.RG28	INTERNAL CIRCLIP	28	1	
13	PVE45-0201	HOSE JOINT D	20#	1	
14	PVE38-W01-608ZZ-J	BEARING	608ZZ	2	
15	PVE45-0203	WASHER	Q235	1	
16	PVE45-0202	Connected sets	6061-T6 (SS)	1	
17	PVE38-HS.B-M6x16-8.8-GB-1	SCREW	M6x16	1	GB70.1-2000
18	PVE38-HS.B-M6x20-8.8-GB-1	SCREW	M6x20	2	GB70.1-2000
19	PVE45-0204	Connecting shaft	45#	1	
20	PVE45-0107	DRIVING SHAFT	45#	1	
21	PVE38-W25-10x470	FLEXIBLE SHAFT	10x470	1	
22	PVE38-0105	SHAFT JOINT	Q235	1	
23	PVE38-W01-6001-J	BEARING	NSK 6001	4	
24	PVE38-0104	VIBRATOR SHAFT	Q235	1	
25	PVE38-CS.RG12	EXTERNAL CIRCLIP	12	1	GB894.1-86
26	PVE38-HS.B-M6x30-8.8-GB-1	SCREW	M6x30	4	GB70.1-2000
27	PVE38-HSPG.W6-DIN-1	SPRING WASHER,TANG ENDS	M6	4	DIN127-A
28	PVE45-0900	Cut rod ASSY		1	
29	PVE38-W05-GX35T SDL	ENGINE	GX35	1	HONDA
30	HCS50-1800	TANK PROTECTION PLATE	PE	1	
31	HCS50-2400	INSERT	Q235	2	
32	HCS50-2500	INSERT	Q235	2	
33	PVE38-FSH.S-M5×16-12.9-DIN-3	SCREW	M5×16	2	
34	PVE38-FSH.S-M5×30-12.9-DIN-3	SCREW	M5×30	2	
35	PVE45-0800	WIRE		1	
36	PVE38-SS.RG16	EXTERNAL CIRCLIP		1	GB895.2-86



Paclite Equipment

12 avenue des Coquelicots 94380 Bonneuil-sur-Marne
France
Tél. + 33 1 49 56 02 82
E-mail : sales@paclite-equip.com

