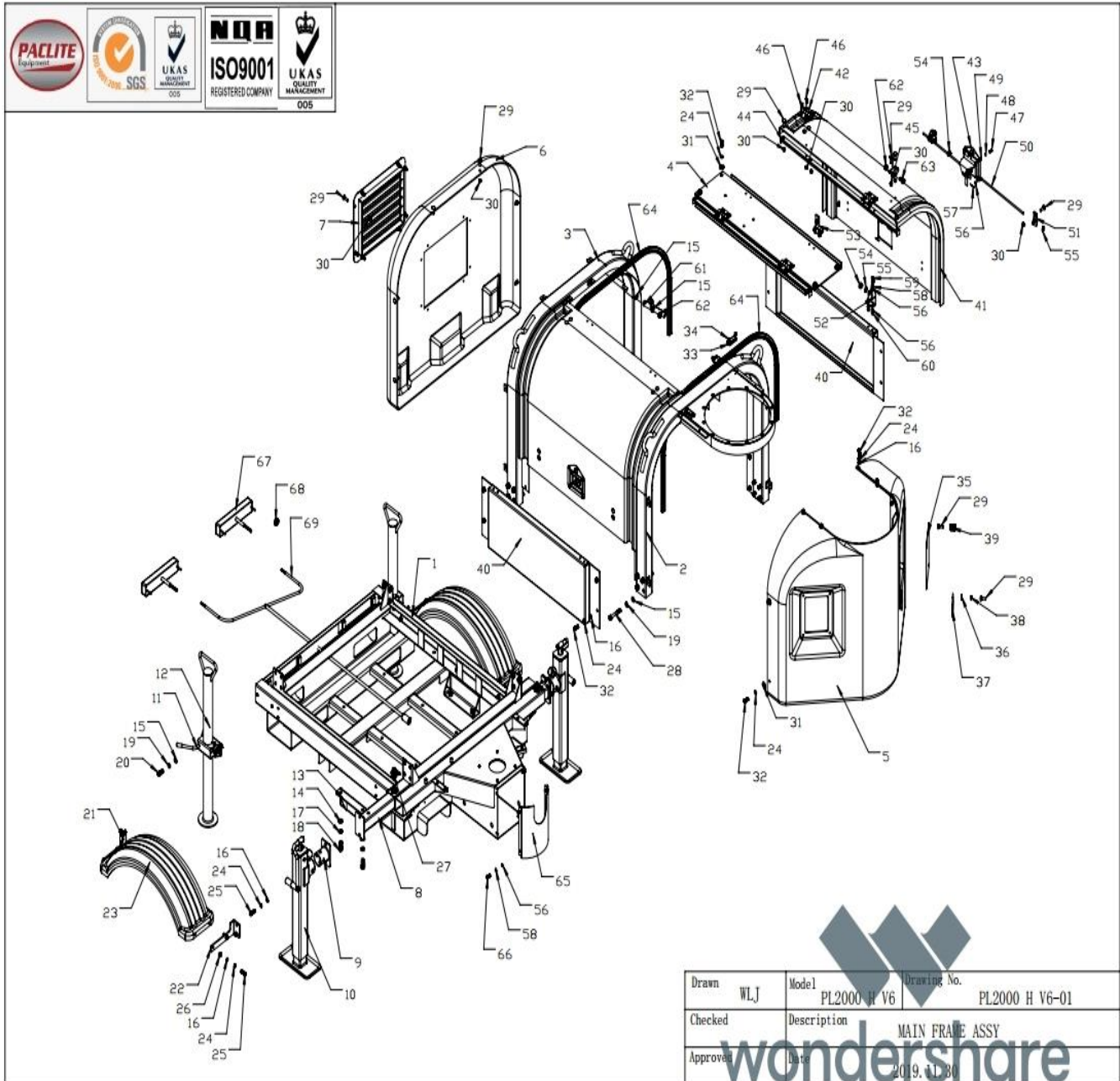


PL2000 H V6-01 MAIN FRAME ASSY

NO.	PART NO.	PART DESCRIPTION	QTY	UNIT PRICE (EUR) 2021
01-1	HLT8-1.4K-010100	MAIN FRAME	1	
01-2	HLT8-4K-010200A	FRONT FRAME	1	
01-3	HLT8-1.4K-010300	REAR FRAME	1	
01-4	HLT8-4K-010400A	COVER	1	
01-5	HLT8-1.4K-010500	FRONT COVER	1	532,30 €
01-6	HLT8-1.4K-010600	REAR COVER	1	433,73 €
01-7	HLT8-1.4K-010700	AIR INLET	1	
01-8	HLT8-4K-010800	TUBULAR FOR STABILIZER	2	
01-9	HLT8-4K-012900	CONNECTOR	2	
01-10	HLT8-4K-010900	STABILIZER	2	300,53 €
01-11	HLT8-4K-011100	CLAMP FOR FOOT	2	106,61 €
01-12	HLT8-4K-011000	SUPPORT FOOT	2	199,86 €
01-13	HLT8-4K-011700L	AXLE SHAFT BRACKET	2	
01-14	FN.W12-DIN-2	WASHER	4	
01-15	FN.W10-DIN-2	WASHER	28	
01-16	FN.W8-DIN-2	WASHER	28	
01-17	HSPG.W12-DIN-2	SPRING WASHER,TANG ENDS	4	
01-18	FN.B-M12x30-8.8-DIN-2	BOLT	4	
01-19	HSPG.W10-DIN-2	SPRING WASHER,TANG ENDS	20	
01-20	FN.B-M10x25-8.8-DIN-2	BOLT	4	
01-21	HLT8-4K-011300	LEFT BRACKET FOR FENDER	2	
01-22	HLT8-4K-011200	RIGHT BRACKET FOR FENDER	2	102,35 €
01-23	HLT8-4K-011400	FENDER	2	
01-24	HSPG.W8-DIN-2	SPRING WASHER,TANG ENDS	36	
01-25	FN.B-M8x25-8.8-DIN-2	BOLT	16	
01-26	IN.N-M8-DIN-2	LOCK NUT	8	
01-27	HLT8-4K-011900	LOCKPIN	2	
01-28	FN.B-M10x70-8.8HALF-DIN-2	BOLT	16	
01-29	CHSN.B-M6x16-GB-2	BOLT	39	
01-30	HF.N-M6-DIN-2	FLANGE NUT	42	
01-31	WOD.W8-GB-2	WASHER	8	
01-32	FN.B-M8x20-8.8-DIN-2	BOLT	20	
01-33	HLT8-4K-012200	SPIRIT LEVEL	2	
01-34	PAN.S-M4x10-GB-2	PAN HEAD SCREW	4	
01-35	HLT8-1.4K-010800	COVER	1	
01-36	WOD.W6-GB-2	WASHER	2	
01-37	HLT8-1.4K-010900	COVER	1	
01-38	IN.N-M6-DIN-2	LOCK NUT	1	
01-39	HLT8-1.4K-011100	KNOBS	4	
01-40	HLT8-1.4K-013900	SIDE COVER	2	
01-41	HLT8-4K-012400A	SIDE DOOR	2	292,77 €
01-42	HLT8-4K-011800	HINGE	4	
01-43	HLT8-1.4K-013300	LOCK	2	
01-44	HLT8-4K-014400	STIFFENED PLATE	2	
01-45	HLT8-4K-014100	SUPPORT	4	
01-46	HSF.S-M6x20-8.8-DIN-2	SOCKET COUNTERSUNK HEAD SCREW	16	
01-47	PAN.S-M4x16-GB-2	PAN HEAD SCREW	8	
01-48	FN.W4-DIN-2	WASHER	8	
01-49	IN.N-M4-DIN-2	LOCK NUT	8	

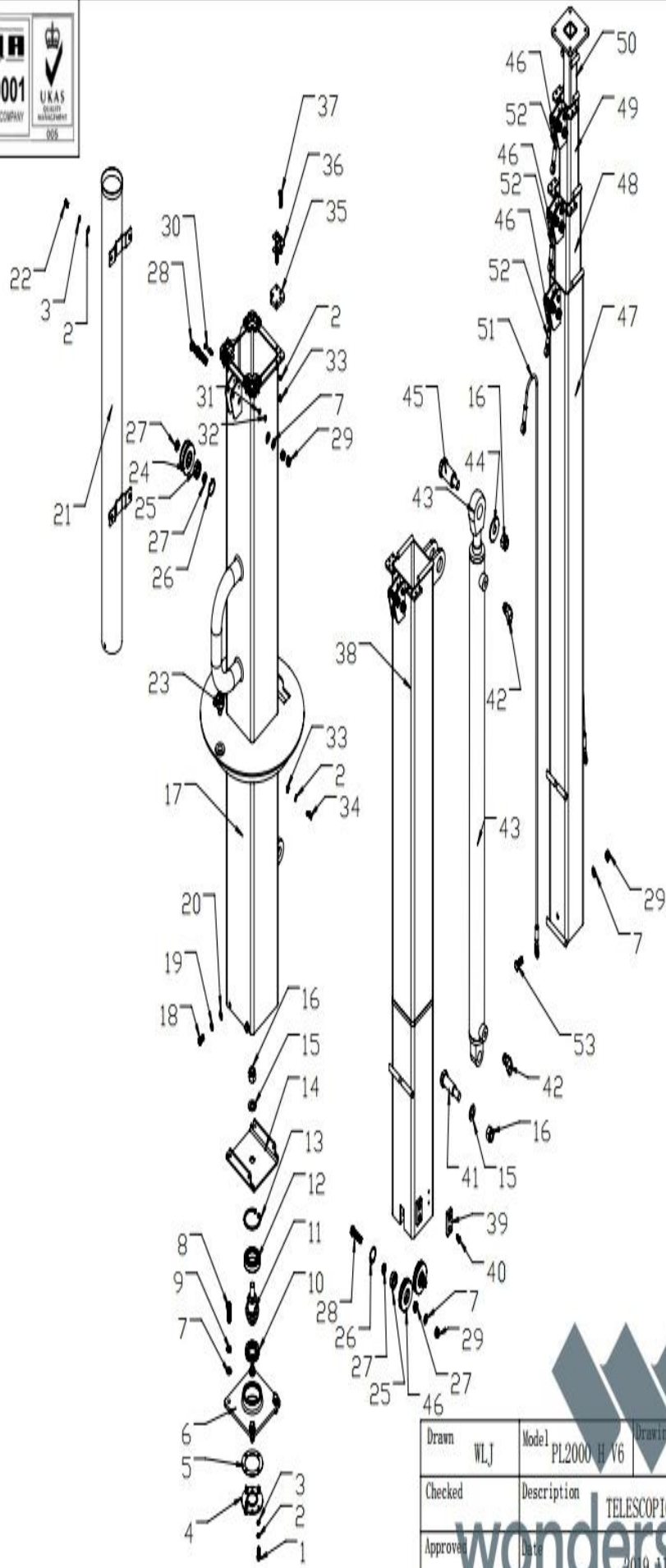
01-50	HLT8-1.4K-015200	BOLT	4	
01-51	HLT8-1.4K-015100	SUPPORT	4	
01-52	HLT8-1.4K-015300	LEFT BRACKET	2	
01-53	HLT8-1.4K-015400	RIGHT BRACKET	2	
01-54	HLT8-1.4K-015500	NYLON BUSH	8	
01-55	CS.RG15	EXTERNAL CIRCLIP	8	
01-56	FN.W6-DIN-2	WASHER	24	
01-57	SP.PIN-1.6x20	SPLIT PIN	4	
01-58	HSPG.W6-DIN-2	SPRING WASHER,TANG ENDS	12	
01-59	FN.B-M6x20-8.8-DIN-2	BOLT	8	
01-60	FN.N-M6-DIN-2	NUT	8	
01-61	HLT8-4K-014000	STRUT	4	
01-62	IN.N-M10-DIN-2	LOCK NUT	8	
01-63	FN.B-M10x20-8.8-DIN-2	BOLT	4	
01-64	HLT8-1.4K-012600	GASKETING	2	161,40 €
01-65	HLT8-4K-011600L	COVER	1	
01-66	FN.B-M6x16-8.8-DIN-2	BOLT	4	
01-67	HLT8-4K-013100	COMBINATION TAIL LAMP	2	
01-68	HLT8-4K-013500	RUBBER SLEEVE	2	
01-69	HLT8-4K-013200	COMBINATION TAIL LAMP CABLE	1	



PL2000 H V6-02 TELESCOPIC MAST ASSY

NO.	PART NO.	PART DESCRIPTION	QTY	
02-1	FN.B-M6x20-8.8-DIN-2	BOLT	4	
02-2	FN.W6-DIN-2	WASHER	25	
02-3	HSPG.W6-DIN-2	SPRING WASHER,TANG ENDS	8	
02-4	HLT8-4K-021800	COVER	1	
02-5	TOL100GB-040401	PACKING PLATE	1	
02-6	HLT8-4K-020900	HUB FOR MAST	1	
02-7	FN.W10-DIN-2	WASHER	20	
02-8	FN.B-M10x30-8.8-DIN-2	BOLT	4	
02-9	HSPG.W10-DIN-2	SPRING WASHER,TANG ENDS	4	
02-10	W01-51107-J	PLANE BEARING	1	
02-11	HLT8-4K-021000	SHAFT	1	
02-12	W01-6007ZZ-J	BEARING	1	
02-13	CH.RG62	INTERNAL CIRCLIP	1	
02-14	HLT8-4K-020800	JUNCTION PLATE	1	
02-15	FN.W16-DIN-2	WASHER	2	
02-16	IN.N-M16-DIN-2	LOCK NUT	3	
02-17	HLT8-4K-020100L	FIRST MAST	1	
02-18	FN.B-M8x16-8.8-DIN-2	BOLT	4	
02-19	HSPG.W8-DIN-2	SPRING WASHER,TANG ENDS	4	
02-20	FN.W8-DIN-2	WASHER	4	
02-21	HLT8-4K-020700	CONDUIT	1	
02-22	FN.B-M6x10-8.8-DIN-2	BOLT	4	
02-23	HLT8-4K-011900	LOCKPIN	1	
02-24	HLT8-4K-021100	PULLEY A	2	73,08 €
02-25	W01-6002LLU-J	BEARING	8	
02-26	CH.RG32	INTERNAL CIRCLIP	8	
02-27	HLT8-4K-021300	BUSH	14	
02-28	FN.B-M10x45-8.8-DIN-2	BOLT	12	
02-29	IN.N-M10-DIN-2	LOCK NUT	16	
02-30	FN.B-M5x35-8.8-DIN-2	BOLT	5	
02-31	FN.W5-DIN-2	WASHER	5	
02-32	IN.N-M5-DIN-2	LOCK NUT	5	
02-33	IN.N-M6-DIN-2	LOCK NUT	17	
02-34	HS.B-M6x16-8.8-GB-2	SCREW	1	
02-35	HLT8-4K-021400	UPPER ANGULAR FOR MAST	4	63,65 €
02-36	HLT8-4K-021500	BLOCKING PLATE	4	65,26 €
02-37	FN.B-M6x30-8.8-DIN-2	BOLT	16	
02-38	HLT8-4K-020200L	2nd MAST	1	
02-39	HLT8-4K-021600	NYLON DOWEL	4	
02-40	HSF.S-M6x16-8.8-DIN-2	SOCKET COUNTERSUNK HEAD SCREW	8	
02-41	HLT8-4K-020103L	PIN	1	
02-42	1CG9-14-04OG	ELBOW	2	
02-43	HLT8-4K-023100	HYDRAULIC RAM	1	1 486,47 €
02-44	WOD.16-GB-2	WASHER	1	
02-45	HLT8-4K-020203L	PIN	1	
02-46	HLT8-4K-021200	PULLEY	6	69,23 €
02-47	HLT8-4K-020300	3rd MAST	1	
02-48	HLT8-4K-020400	4th MAST	1	
02-49	HLT8-4K-020500	5th MAST	1	
02-50	HLT8-4K-020600	6th MAST	1	

02-51	HLT8-4K-022100	STEEL CABLE	1	63,94 €
02-52	HLT8-4K-022200	STEEL CABLE	3	63,94 €
02-53	FN.B-M10x25-8.8-GB-2	BOLT	4	

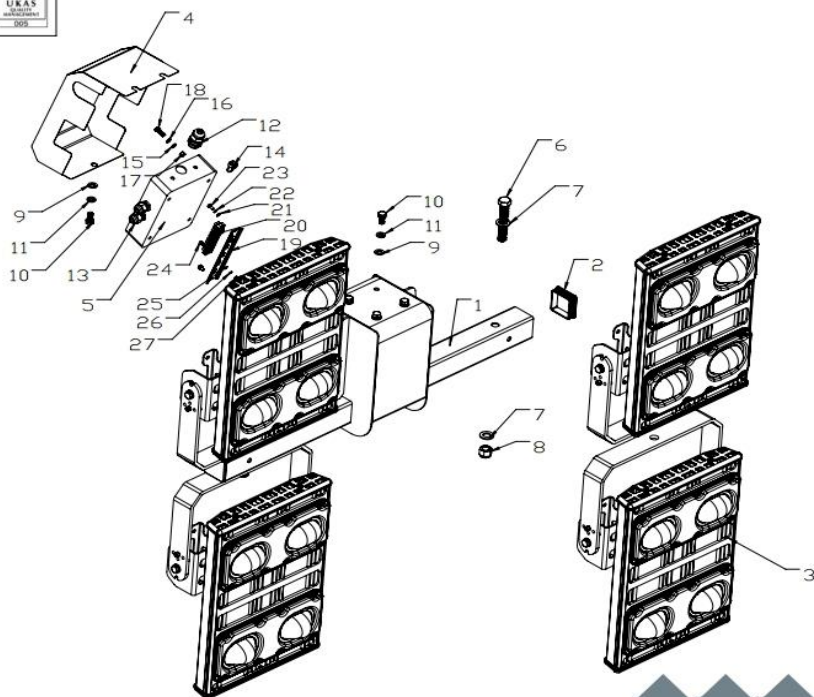


Drawn	WLJ	Model	PL2000 H V6	Drawing No.	PL2000 H V6-02
Checked		Description	TELESCOPIC MAST ASSY		
Approved		Date	2019.11.20		

wondershare

PL2000 H V6-03 FLOODLIGHT GROUP ASSY

NO.	PART NO.	PART DESCRIPTION	QTY	
03-1	HLT8-1.4K-030100	FLOODLIGHT FRAME	1	
03-2	HLT8-4K-030700	COVER	2	19,32 €
03-3	HLT8-1.4K-030500	LED LAMP	4	2 318,40 €
03-4	HLT8-4K-030200	ELECTRIC BOX COVER	1	
03-5	HLT8-4K-030900	ELECTRIC BOX	1	
03-6	FN.B-M16x100-8.8HALF-DIN-2	BOLE	2	
03-7	FN.W16-DIN-2	WASHER	4	
03-8	IN.N-M16-DIN-2	LOCK NUT	2	
03-9	FN.W10-DIN-2	WASHER	5	
03-10	FN.B-M10x20-8.8-DIN-2	BOLT	5	
03-11	HSPG.W10-DIN-2	SPRING WASHER,TANG ENDS	5	
03-12	HLT8-4K-052200	CABLE GLAND	1	
03-13	HLT8-4K-031100	CABLE GLAND	4	
03-14	HLT8-4K-031200	PC CONNECTOR	1	
03-15	FN.W6-DIN-2	WASHER	8	
03-16	HSPG.W6-DIN-2	SPRING WASHER,TANG ENDS	8	
03-17	FN.N-M6-DIN-2	NUT	4	
03-18	FN.B-M6x20-8.8-DIN-2	BOLT	4	
03-19	HLT8-1.4K-032200	BRACKET	1	
03-20	HLT8-1.4K-032100	10 HOLE TERMINAL BLOCK	1	
03-21	FN.W5-DIN-2	WASHER	2	
03-22	SPG.W5-DIN-2	SPRING WASHER	2	
03-23	FN.B-M5x10-8.8-DIN-2	BOLT	2	
03-24	PAN.S-M4x16-GB-2	PAN HEAD SCREW	2	
03-25	FN.W4-DIN-2	WASHER	2	
03-26	SPG.W4-DIN-2	SPRING WASHER	2	
03-27	FN.N-M4-DIN-2	NUT	2	



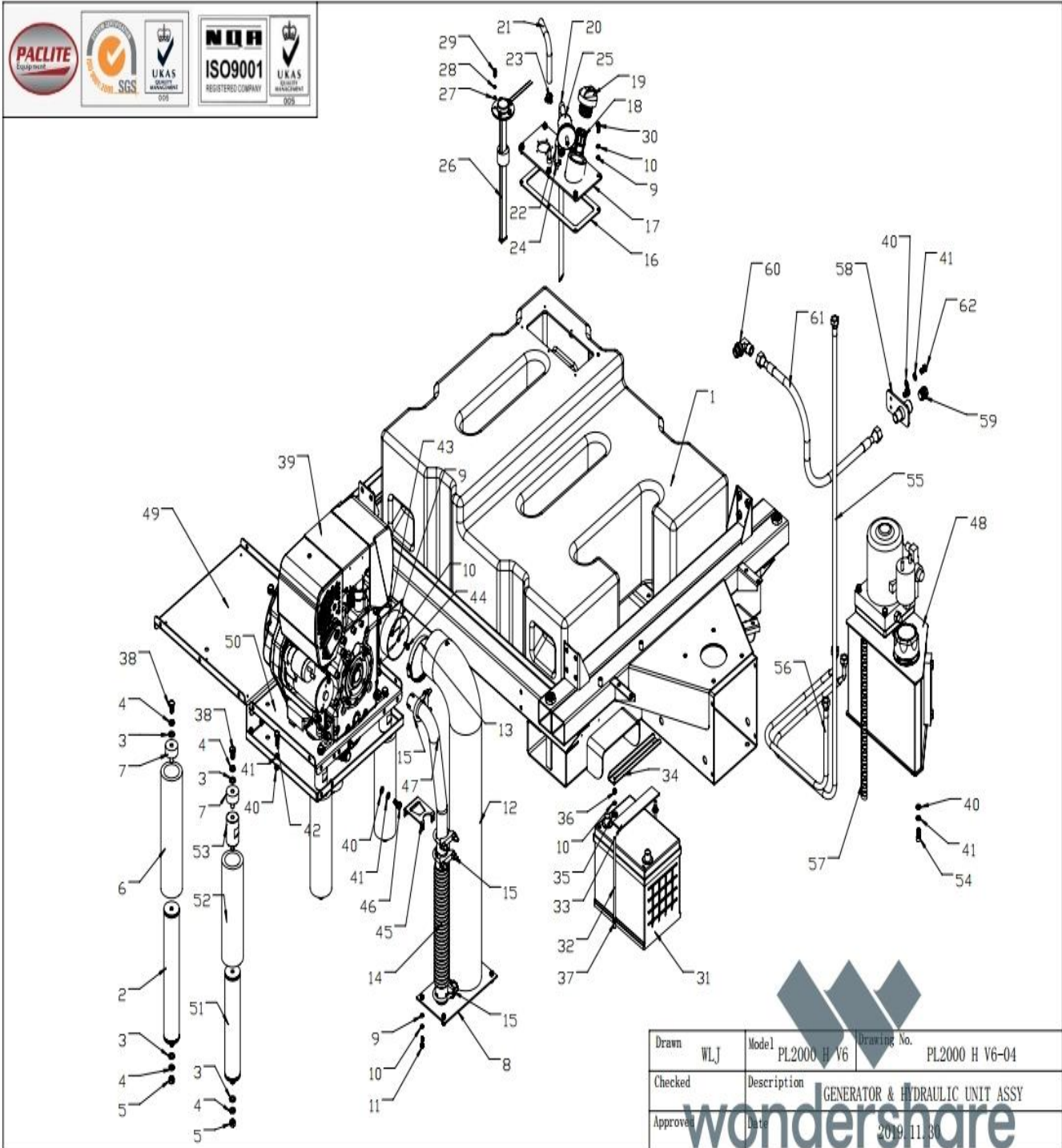
Drawn	WLJ	Model	PL2000 H V6	Drawing No.	PL2000 H V6-03
Checked		Description	FLOODLIGHT GROUP ASSY		
Approved		Date	20.09.2018		

wondershare

PL2000 H V6-04 GENERATOR & HYDRAULIC UNIT ASSY

NO.	PART NO.	PART DESCRIPTION	QTY	
04-1	HLT8-1.4K-070900	DIESEL TANK	1	793,50 €
04-2	HLT8-1.4K-040300	PILLAR	2	
04-3	FN.W10-DIN-2	WASHER	13	
04-4	HSPG.W10-DIN-2	SPRING WASHER,TANG ENDS	13	
04-5	FN.N-M10-DIN-2	NUT	6	
04-6	HLT8-1.4K-040360	RUBBER TUBE	2	
04-7	HLT8-1.4K-041500	SHOCK MOUNTS	6	
04-8	HLT8-1.4K-040900	PLATE	1	
04-9	FN.W6-DIN-2	WASHER	14	
04-10	HSPG.W6-DIN-2	SPRING WASHER,TANG ENDS	16	
04-11	FN.B-M6x20-8.8-DIN-2	BOLT	4	
04-12	HLT8-1.4K-041600	VENT PIPE	1	
04-13	HOOP.D90-140	HOOP	2	
04-14	HLT8-1.4K-071200	EXHAUST PIPE	1	
04-15	HLT8-4K-042100	STRONG HOOP	4	
04-16	HLT8-1.4K-040650	RUBBER PAD	1	
04-17	HLT8-1.4K-040600	COVER PLATE	1	
04-18	RAM70ND-010114	STRAINER	1	27,72 €
04-19	01-3150-1415-01	FUEL TANK CAP WITH LOCK	1	125,06 €
04-20	HLT8-4K-041000	INLET PIPE	1	
04-21	HLT8-4K-041100	BREATH PIPE	1	
04-22	HLT8-4K-041200	OIL RETURN PIPE	1	
04-23	HOOP.D8-20	HOOP	5	
04-24	RAM85d-000026	HOSE BAND	2	
04-25	01-1150-1512-01	DIESEL FILTER 1	1	46,06 €
04-26	HLT8-1.4K-043100	FUEL LEVEL SENSOR	1	187,28 €
04-27	FN.W5-DIN-2	WASHER	5	
04-28	SPG.W5-DIN-2	SPRING WASHER	5	
04-29	FN.B-M5x12-8.8-DIN-2	BOLT	5	
04-30	FN.B-M6x16-8.8-DIN-2	BOLT	6	
04-31	ROL800-000001D	BATTERY	1	
04-32	HLT8-1.4K-070200	SCREW	2	
04-33	ROL800-081000	UP UNDERLAY	1	
04-34	ROL800-081100	FIXED PLATE	1	
04-35	WOD.W6-GB-2	WASHER	2	
04-36	IN.N-M6-DIN-2	LOCK NUT	2	
04-37	FN.N-M6-DIN-2	NUT	2	
04-38	FN.B-M10x16-8.8-DIN-2	BOLT	7	
04-39	W05-1B30X-PMG-HATZ	Power generation engine	1	
04-40	FN.W8-DIN-2	WASHER	11	
04-41	HSPG.W8-DIN-2	SPRING WASHER,TANG ENDS	11	
04-42	FN.B-M8x25-8.8-DIN-2	BOLT	4	
04-43	HLT8-1.4K-040700	AIR OUTLET	1	
04-44	FN.B-M6x12-8.8-DIN-2	BOLT	4	
04-45	HLT8-1.4K-040800	BRACKET	1	
04-46	FN.B-M8x20-8.8-DIN-2	BOLT	2	
04-47	HLT8-1.4K-071100	EXHAUST PIPE	1	
04-48	HLT8-1.4K-042100	HYDRAULIC PUMP STATION	1	2 375,57 €
04-49	HLT8-1.4K-040100	BRACKET	1	
04-50	HLT8-1.4K-040200	BRACKET	1	

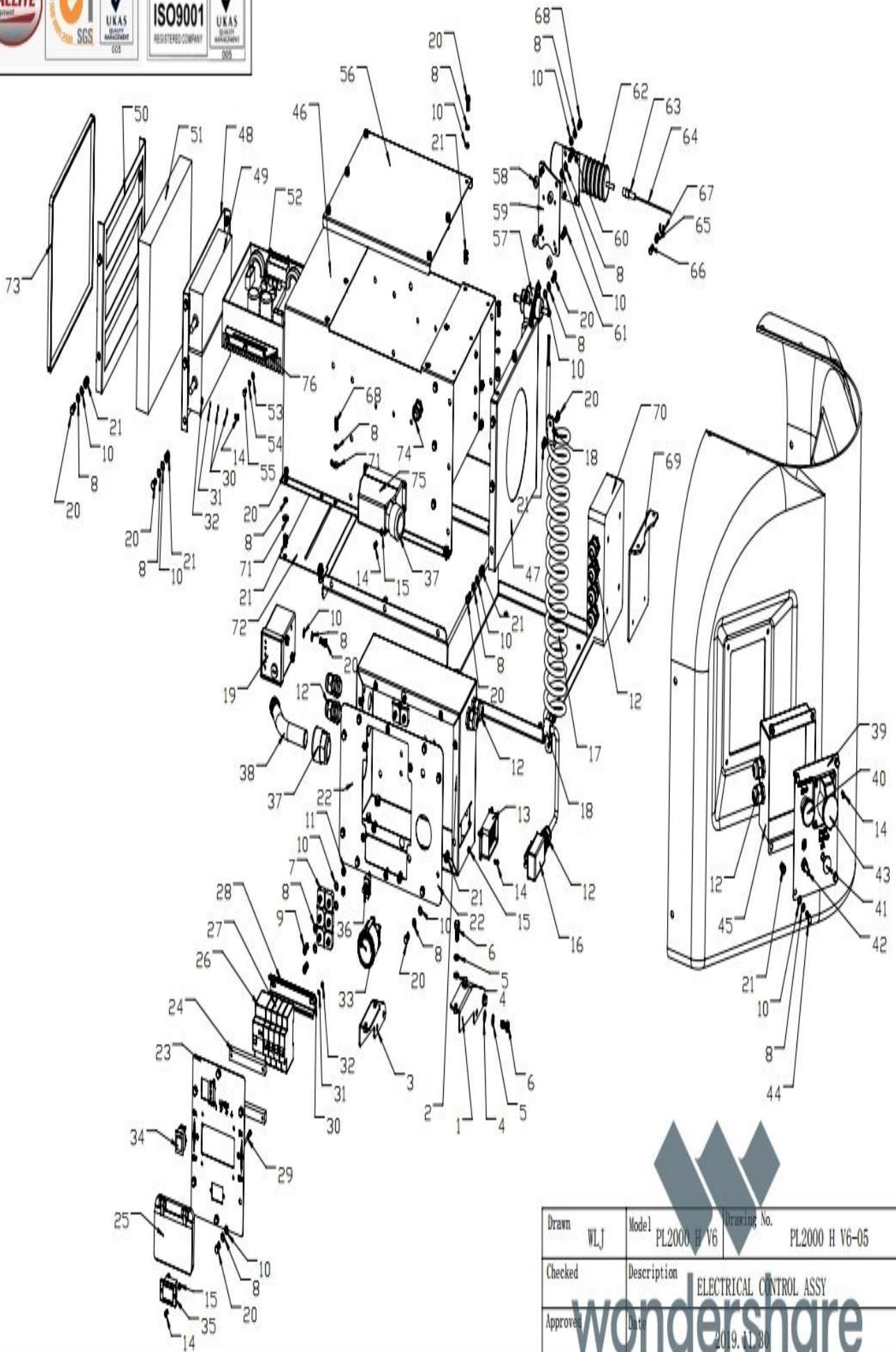
04-51	HLT8-1.4K-040400	PILLAR	4	
04-52	HLT8-1.4K-040350	RUBBER TUBE	4	
04-53	HLT8-1.4K-041700	BLOCK	4	
04-54	HS.B-M8x20-8.8-GB-2	SCREW	3	
04-55	20411-14-04W / 20441-14-04W	HYDRAULIC HOSE	1	
04-56	20411-14-04W / 20441-14-04W	HYDRAULIC HOSE	1	
04-57	HLT8-4K-071000	SPIRAL GUARD	1	
04-58	01-1191-2558-00	ENGINE DRAIN BKT	1	
04-59	HHOS.B-G1/2	HEXHEAD PLUG	1	
04-60	1CH9-22-220G	90° ELBOW	1	
04-61	20411-22-06T×1T06×700	HYDRAULIC HOSE	1	
04-62	FN.B-M8×16-8.8-DIN-2	BOLT	2	
04-63	HLT8-1.4K-045000	CATHODE WIRE	1	
04-64	HLT8-1.4K-046000	ANODE WIRE	1	
04-65	HLT8-1.4K-047000	CATHODE WIRE	1	
04-66	HLT8-1.4K-048000	ANODE WIRE	1	



PL2000 H V6-05 ELECTRICAL CONTROL ASSY

NO.	PART NO.	PART DESCRIPTION	QTY	
05-1	HLT8-1.4K-050500	BRACKET(L)	1	
05-2	HLT8-1.4K-050100	ELECTRIC BOX	1	
05-3	HLT8-1.4K-050600	BRACKET(R)	1	
05-4	FN.W8-DIN-2	WASHER	8	
05-5	HSPG.W8-DIN-2	SPRING WASHER,TANG ENDS	8	
05-6	FN.B-M8x20-8.8-DIN-2	BOLT	8	
05-7	HLT8-4K-051300	6 POLES TERMINAL BOARD	2	
05-8	HSPG.W6-DIN-2	SPRING WASHER,TANG ENDS	70	
05-9	HS.B-M6x16-8.8-GB-2	SCREW	4	
05-10	FN.W6-DIN-2	WASHER	60	
05-11	IN.N-M6-DIN-2	LOCK NUT	4	
05-12	HLT8-4K-052200	CABLE GLAND	11	
05-13	HLT8-4K-051500	10 POLES SOCKET	1	
05-14	PAN.S-M4x10-GB-2	PAN HEAD SCREW	30	
05-15	IN.N-M4-DIN-2	LOCK NUT	10	
05-16	HLT8-4K-051600	10 POLES PLUG	1	
05-17	HLT8-4K-051700	SPRING CABLE	1	
05-18	HLT8-4K-051800	R-CLAMP	2	
05-19	HLT8-1.4K-052500	ENGINE STARTING PANEL	1	
05-20	FN.B-M6x16-8.8-DIN-2	BOLT	50	
05-21	NUTSERT-M6x15-1	Nutsert	55	
05-22	HLT8-1.4K-050200	COVER	1	
05-23	HLT8-4K-050500L	CONTROL PANEL A	1	
05-24	HLT8-4K-052300	SPACER	2	
05-25	HLT8-4K-050900	CIRCUIT BREAKER PROTECTION	1	
05-26	HLT8-4K-050600	EARTH LEAKAGE RELAY	1	
05-27	HLT8-4K-050700	CIRCUIT BREAKER	4	
05-28	HLT8-4K-050800	CIRCUIT BREAKER BRACKET	1	
05-29	PAN.S-M4x90-GB-2	PAN HEAD SCREW	2	
05-30	FN.W4-DIN-2	WASHER	34	
05-31	SPG.W4-DIN-2	SPRING WASHER	18	
05-32	FN.N-M4-DIN-2	NUT	18	
05-33	HLT8-1.4K-043200	FUEL GAUGE	1	
05-34	HLT8-4K-053100	BUTTON SWITCH	1	
05-35	HLT8-4K-053400	TIMER	1	
05-36	ROL800-000001	TOGGLE SWITCH	1	
05-37	HLT8-1.4K-059100	BELLOWS JOINT	2	
05-38	HLT8-1.4K-059200	BELLOWS	1	
05-39	HLT8-4K-050400	CONTROL PANEL B	1	69,00 €
05-40	HCC20A-020210	SAFETY SWITCH	1	61,01 €
05-41	HLT8-4K-051100	BUTTON BREAKER	1	47,96 €
05-42	HLT8-4K-051200	EARTH CLAMP CONNECTION	1	36,80 €
05-43	HLT8-4K-051000	SINGGLE PHASE SOCKET 230V	1	144,56 €
05-44	FN.B-M6x20-8.8-DIN-2	BOLT	4	
05-45	HLT8-1.4K-050300	JUNCTION BOX	1	
05-46	HLT8-1.4K-051100	AIR GUIDE SHELL	1	
05-47	HLT8-1.4K-051200	COVER	1	
05-48	HLT8-1.4K-051300	PLATE	2	
05-49	HLT8-1.4K-052600	LED LAMP POWER SUPPLY	4	
05-50	HLT8-1.4K-051400	BAFFLE	1	

05-51	HLT8-1.4K-052800	SPONGE	1	
05-52	HLT8-1.4K-052700	INVERTER	1	
05-53	FN.W5-DIN-2	WASHER	6	
05-54	SPG.W5-DIN-2	SPRING WASHER	6	
05-55	FN.B-M5x10-8.8-DIN-2	BOLT	6	
05-56	HLT8-1.4K-051500	COVER	1	
05-57	01-1150-1436-01	FUEL PUMP	1	
05-58	HLT8-1.4K-051600	BLOCK	4	
05-59	HLT8-1.4K-050700	PLATE	1	
05-60	FN.B-M6x25-8.8-DIN-2	BOLT	2	
05-61	HSF.S-M6x25-8.8-DIN-2	SOCKET COUNTERSUNK HEAD SCREW	2	
05-62	01-1150-0086-01	MAGNETIC FORCE	1	802,68 €
05-63	01-1150-3633-00	MAGNETIC FORCE JOINT	1	17,48 €
05-64	01-1150-3635-01	WIRE-STEEL	1	6,90 €
05-65	01-1150-3634-00	LINK PIN	1	
05-66	FN.B-M5x16-8.8-DIN-2	BOLT	1	
05-67	ET.RG 8	BEAD FLANGE	1	
05-68	FN.B-M6x12-8.8-DIN-2	BOLT	10	
05-69	HLT8-1.4K-050800	BRACKET	1	
05-70	HLT8-1.4K-050900	ELECTRIC BOX	1	
05-71	WOD.W6-GB-2	WASHER	10	
05-72	HLT8-1.4K-051700	PLATE	1	
05-73	CPT90P-040600	SEAL	1	
05-74	HLT8-4K-031100	CABLE GLAND	1	
05-75	HLT8-1.4K-054000	24 POLES SOCKET	1	
05-76	HLT8-1.4K-052900	INVERTER BRKT	2	

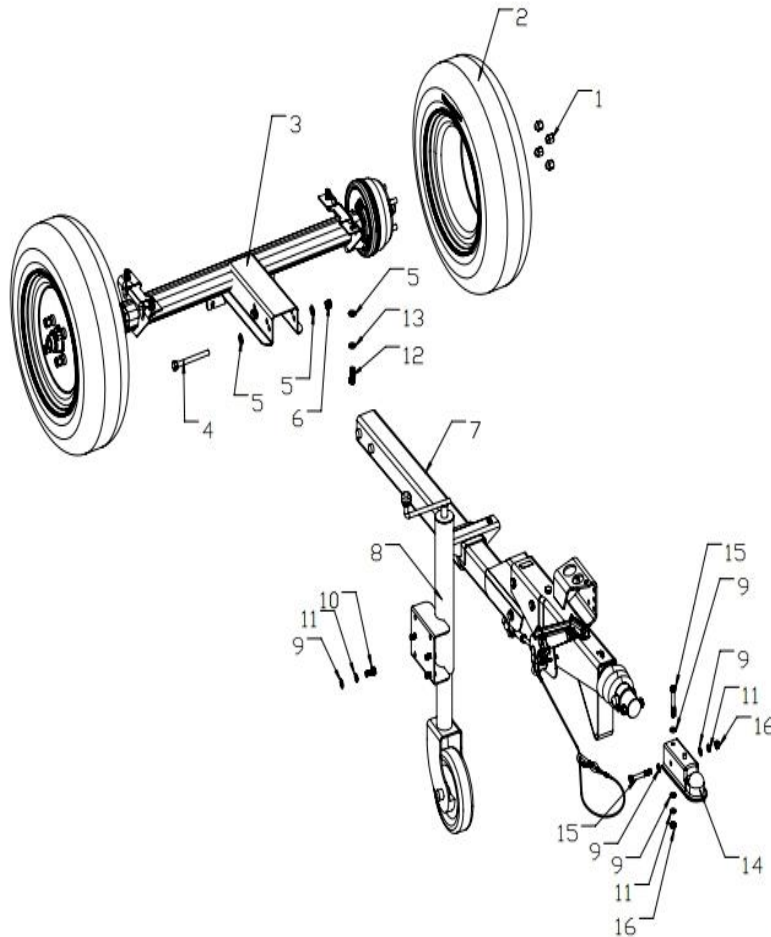


Drawn	WLJ	Model	PL2000 H V6	Drawing No.	PL2000 H V6-05
Checked		Description	ELECTRICAL CONTROL ASSY		
Approved		Date	2019.11.30		

wondershare

PL2000 H V6-06A STANDARD NON ROAD TOW ASSY

NO.	PART NO.	PART DESCRIPTION	QTY
06-1	HLT8-1.4K-060500	WHEEL BOLT	8
06-2	HLT8-4K-060400L	WHEEL	2
06-3	HLT8-1.4K-060100	AXLE	1
06-4	FN.B-M12x120-8.8HALF-DIN-2	BOLT	2
06-5	FN.W12-DIN-2	WASHER	8
06-6	IN.N-M12-DIN-2	LOCK NUT	2
06-7	HLT8-1.4K-060700	DRAG ROD ASSY	1
06-8	HLT8-4K-061100	ADJUSTABLE SUPPORT FOOT	1
06-9	FN.W10-DIN-2	WASHER	8
06-10	FN.B-M10x25-8.8-DIN-2	BOLT	4
06-11	HSPG.W10-DIN-2	SPRING WASHER,TANG ENDS	6
06-12	FN.B-M12x30-8.8-DIN-2	BOLT	4
06-13	HSPG.W12-DIN-2	SPRING WASHER,TANG ENDS	4
06-14	HLT8-4K-061300L	KUGEL KUPPLUNG	1
06-15	FN.B-M10x70-8.8HALF-DIN-2	BOLT	2
06-16	FN.N-M10-DIN-2	NUT	2



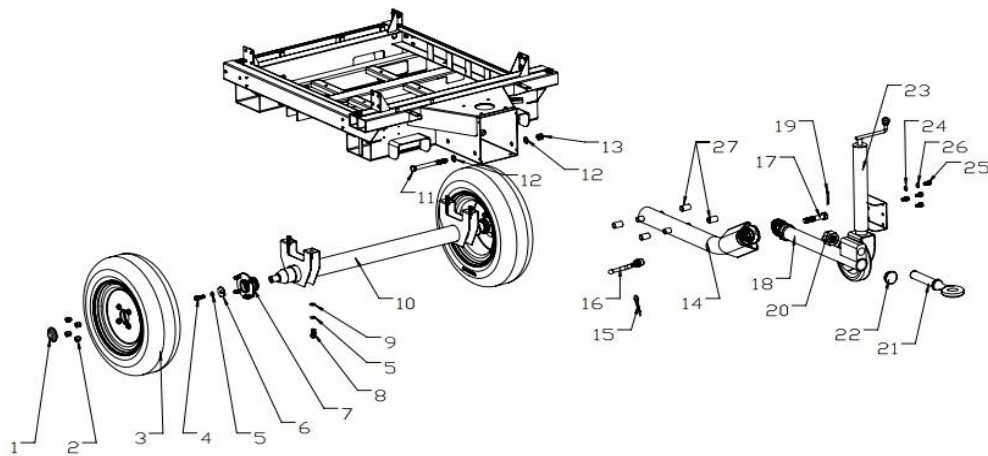
Drawn	WLJ	Model	PL2000 H V6	Drawing No.	PL2000 H V6-06A
Checked		Description	SLOW TOWING ASSY		
Approved		Date	2019.11.30		

Customer selection

wondershare

PL2000 H V6-06B STANDARD NON ROAD TOW ASSY

NO.	PART NO.	PART DESCRIPTION	QTY
06-1	HLT8-4K-060600	DUST CAP	2
06-2	HLT8-4K-060500	HUB NUT	8
06-3	HLT8-4K-060400	WHEEL	2
06-4	FN.B-M12x35-8.8-DIN-2	BOLT	2
06-5	HSPG.W12-DIN-2	SPRING WASHER,TANG ENDS	6
06-6	HLT8-4K-060300	WASHER	2
06-7	HLT8-4K-060200	HUB UNIT	2
06-8	FN.B-M12x30-8.8-DIN-2	BOLT	4
06-9	FN.W12-DIN-2	WASHER	4
06-10	HLT8-4K-060100	AXLE	1
06-11	FN.B-M16x230-8.8HALF-DIN-2	BOLT	2
06-12	FN.W16-DIN-2	WASHER	4
06-13	IN.N-M16-DIN-2	LOCK NUT	2
06-14	HLT8-4K-060700	DRAG ROD	1
06-15	SCP.PIN-5x50-DIN-2	SPRING COTTER	1
06-16	HLT8-4K-061000	SLOTTED NUT WITH HANDLE	1
06-17	HLT8-4K-060900	BOLT	1
06-18	HLT8-4K-060800	ADJUSTMENT ROD	1
06-19	SP.PIN-5x50-GB-2	SPLIT PIN	1
06-20	HS.N-M36-GB-1	SLOTTING NUT	1
06-21	HLT8-4K-061300	TOWING EYE	1
06-22	HLT8-4K-061200	PLASTIC CAP	1
06-23	HLT8-4K-061100	ADJUSTABLE SUPPORT FOOT	1
06-24	HLT8-4K-FN.W10-DIN-1	WASHER	4
06-25	FN.B-M10x25-8.8-DIN-2	BOLT	4
06-26	HSPG.W10-DIN-2	SPRING WASHER,TANG ENDS	4
06-27	HLT8-4K-061700	BUSHING	4



Drawn	WLJ	Model	PL2000 H V6	Drawing No.	PL2000 H V6-06B
Checked		Description	SLOW TOWING ASSY		
Approved		Date	2019-11-30		

wondershare