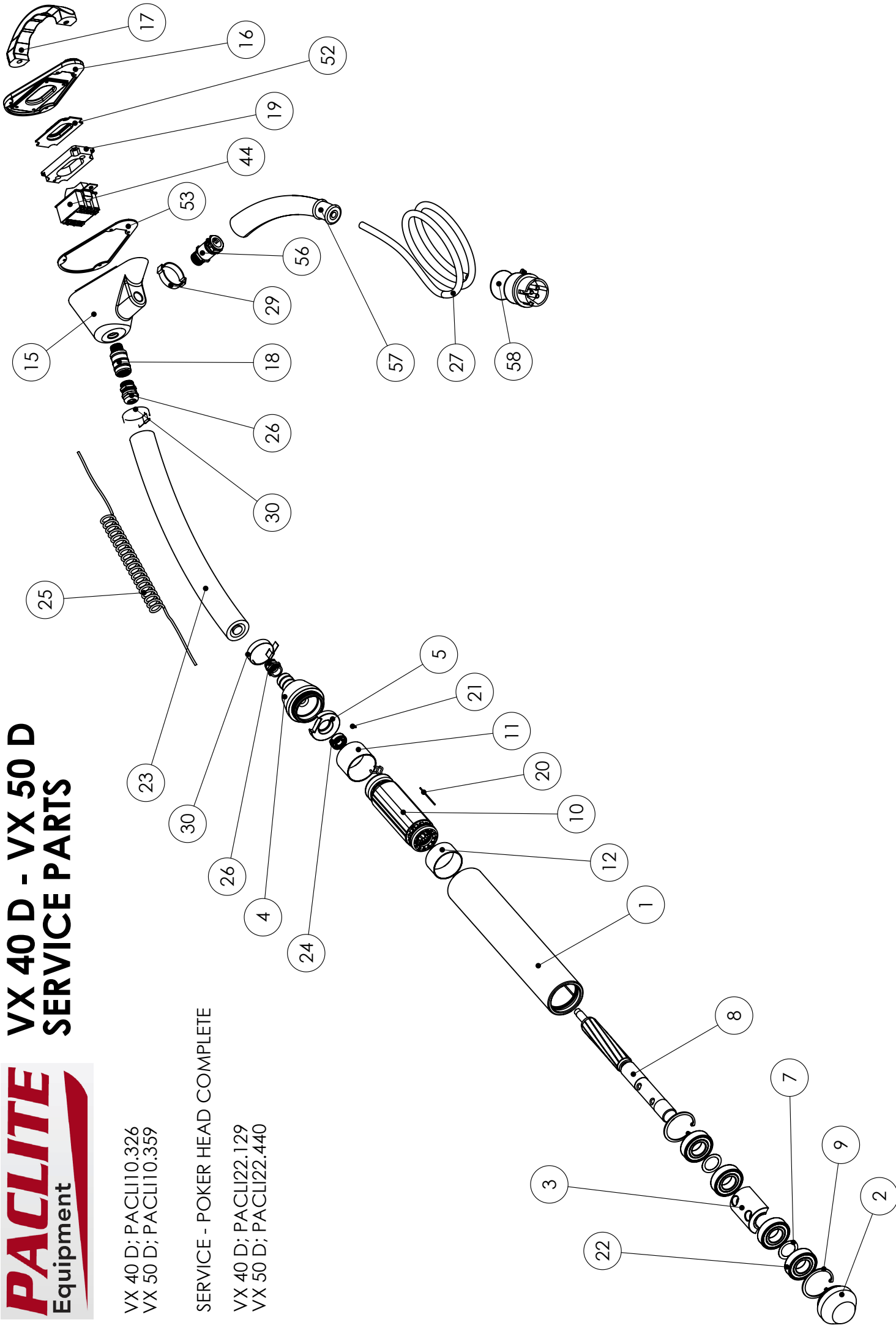


**VX 40 D - VX 50 D  
SERVICE PARTS**

VX 40 D; PACLI10.326  
VX 50 D; PACLI10.359

SERVICE - POKER HEAD COMPLETE

VX 40 D; PACLI22.129  
VX 50 D; PACLI22.440



	<b>SPARE LIST</b>	Fecha: 11/05/2009	
	<b>PISTOL HIGH FREQUENCY POKER VX 40 D</b>		<b>PACLI 10.326</b>
<b>QTY</b>	<b>DESCRIPTION</b>	<b>DRAW N°</b>	<b>CODE</b>
1	POKER BOTTLE (YELLOW) AE 425		PACLI 22.129
1	CYLINDER MOTOR HOUSING	1	PACLI 38.256
1	CYLINDER TAP NUT	2	PACLI 38.260
1	ECCENTRIC	3	PACLI 38.259
1	LINK HOSE NUT	4	PACLI 38.257
1	BEARING SUPPORT	5	PACLI 32.019
2	FRICITION WASHER 15x21X0,1	7	PACLI 78.059
1	COMPLETE ROTOR SET	8	PACLI 26.086
1	SEGER RING I 35 DIN 472	9	PACLI 82.032
1	COMPLETE STATOR SET (33x18xL 100)	10	PACLI 24.101
1	DISTANCER COLLAR L=25	11	PACLI 38.235
1	DISTANCER COLLAR L=16,5	12	PACLI 38.234
1	SWITCH BOX (YELLOW)	15	PACLI 30.337.1
1	COVER SWITCH BOX (YELLOW)	16	PACLI 30.338.1
1	HANDLE	17	PACLI 48.016
1	LINK HOSE 1"	18	PACLI 38.262
1	SUPPORT SWITCH	19	PACLI 30.148.4
1	STATOR CYLINDER PIN 1.5x28 (LONG)	20	PARCLI 52.007
1	BEARING SUPPORT PIN 2x7,8 (SHORT)	21	PACLI 52.023
4	BEARING 6202 Z C3 15x35x11	22	PACLI 75.030
1	RUBBER HOSE MF 550 (1 METER LONG)	23	PACLI 58.001.1
1	BEARING 626 ZZ C3 6x19x6	24	PACLI 75.050
1	INTERIOR CONNECTION 3x2,5 (1 METER LONG)	25	PACLI 60.120
2	PACKING BOX M20x1,5x15	26	PACLI 62.062
1	CONNECTION CABLE 3x2,5 (15 METERS LONG)	27	PACLI 60.007.BQF.3PH.15
1	HOSE CLAMP (SAPA Ø 37 - 40) RUBBER SLEEVE	29	PACLI 46.080
2	HOSE CLAMP J-245	30	PACLI 46.063
1	SWITCH MARQUARDT	44	PACLI 66.022
1	SWITCH SILICON SEAL	52	PACLI 76.105
1	SWITCH BOX CONNECTOR COVER	53	PACLI 76.109
1	PACKING BOX M20/16RL	56	PACLI 62.089
1	RUBBER SLEEVE	57	PACLI 58.022.C
1	CETAC PLUG 42V	58	PACLI 65.011

	<b>PACLITE</b>	Revisión nº 0	
	<b>SPARE LIST</b>	Fecha: 11/05/2009	
	<b>PISTOL HIGH FREQUENCY POKER VX 50 D</b>		<b>PACLI 10.359</b>
<b>QTY</b>	<b>DESCRIPTION</b>	<b>DRAW Nº</b>	<b>CODE</b>
1	POCKER BOTTLE (YELLOW) TURBO 52		PACLI 22.440
1	CYLINDER MOTOR HOUSING	1	PACLI 38.308
1	CYLINDER TAP NUT (TEMPER)	2	PACLI 38.226.TE
1	ECCENTRIC	3	PACLI 38.304
1	LINK HOSE NUT	4	PACLI 38.225
1	BEARING SUPPORT	5	PACLI 32.028
2	FRICITION WASHER 20x28x0,1	7	PACLI 78.045
1	COMPLETE ROTOR SET	8	PACLI 26.098
2	SEEGER RING I 42 DIN 472	9	PACLI 82.026
1	COMPLETE STATOR SET (Ø42x21,5hxL120)	10	PACLI 24.131
1	DISTANCE COLLAR L=36	11	PACLI 38.229
1	DISTANCE COLLAR L=27	12	PACLI 38.228
1	SWITCH BOX (YELLOW)	15	PACLI 30.337.1
1	COVER SWITCH BOX (YELLOW)	16	PACLI 30.338.1
1	HANDLE	17	PACLI 48.016
1	LINK HOSE 1"	18	PACLI 38.262
1	SUPPORT SWITCH	19	PACLI 30.148.4
1	STATOR CYLINDER PIN 1.5x28 (LONG)	20	PACLI 52.007
1	BEARING SUPPORT PIN 3x7,8 (SHORT)	21	PACLI 52.038
4	BEARINGS 6004 J2ZE C3 P6 M1 IV 20X42X12	22	PACLI 75.092
1	RUBBER HOSE MF 550 (1 METER LONG)	23	PACLI 58.001.1
1	BEARING 6000 JZE C3 P6 M1 IV 10x26x8	24	PACLI 75.090
1	INTERIOR CONNECTION CABLE 3x2,5 (1 METER LONG)	25	PACLI 60.120
2	PACKING BOX M20x1,5x15	26	PACLI 62.062
1	CONNECTION CABLE 3x2,5 (15 METERS LONG)	27	PACLI 60.007.BQF.3PH.15
1	HOSE CLAMP (SAPA Ø 37 - 40) RUBBER SLEEVE	29	PACLI 46.080
2	HOSE CLAMP J-245	30	PACLI 46.063
1	SWITCH MARQUARDT	44	PACLI 66.022
1	SWITCH SILICON SEAL	52	PACLI 76.105
1	SWITCH BOX CONNECTOR COVER	53	PACLI 76.109
1	PACKING BOX M20/16RL	56	PACLI 62.089
1	RUBBER SLEEVE	57	PACLI 58.022.C
1	CETAC PLUG 42V	58	PACLI 65.011