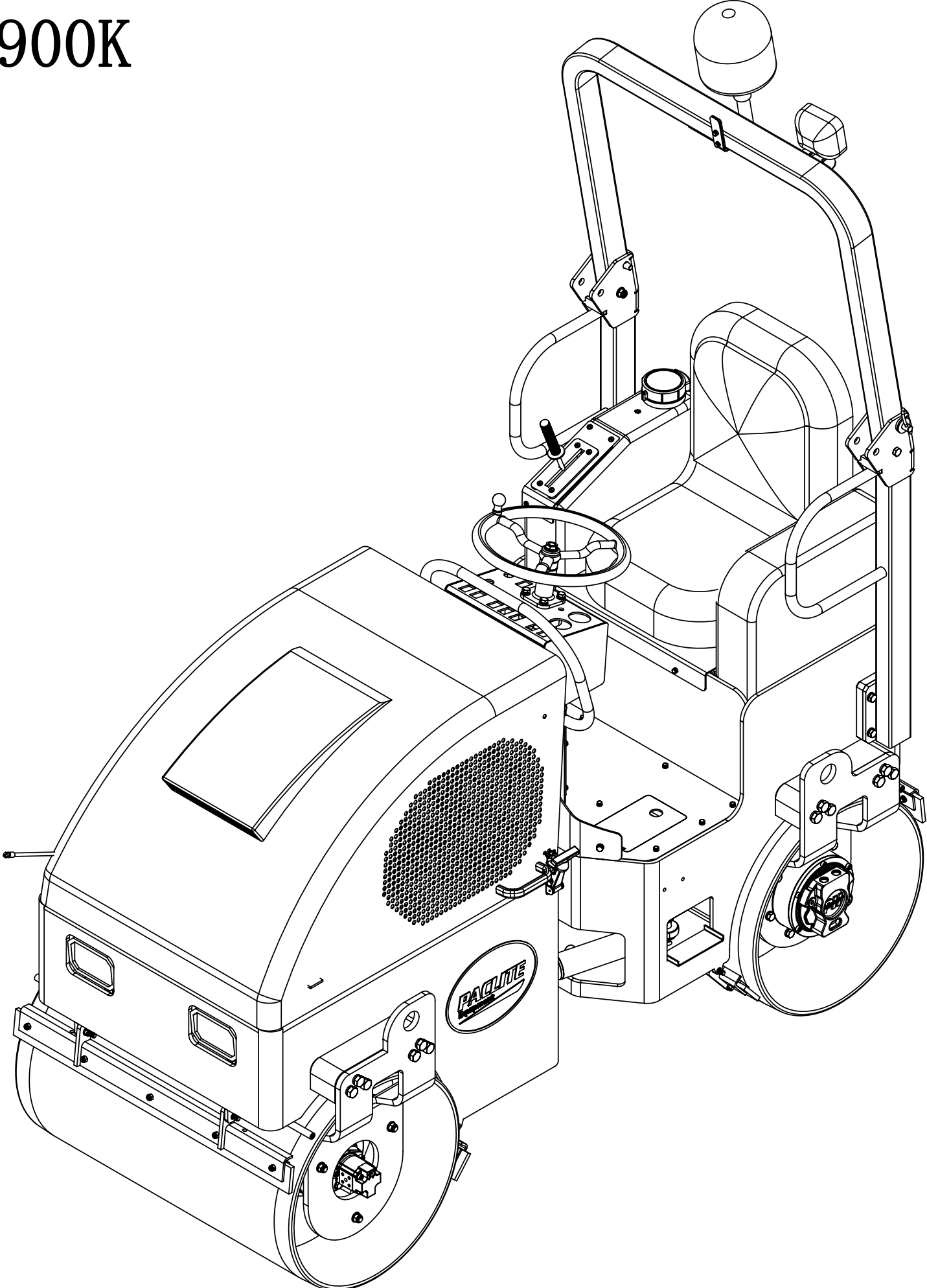
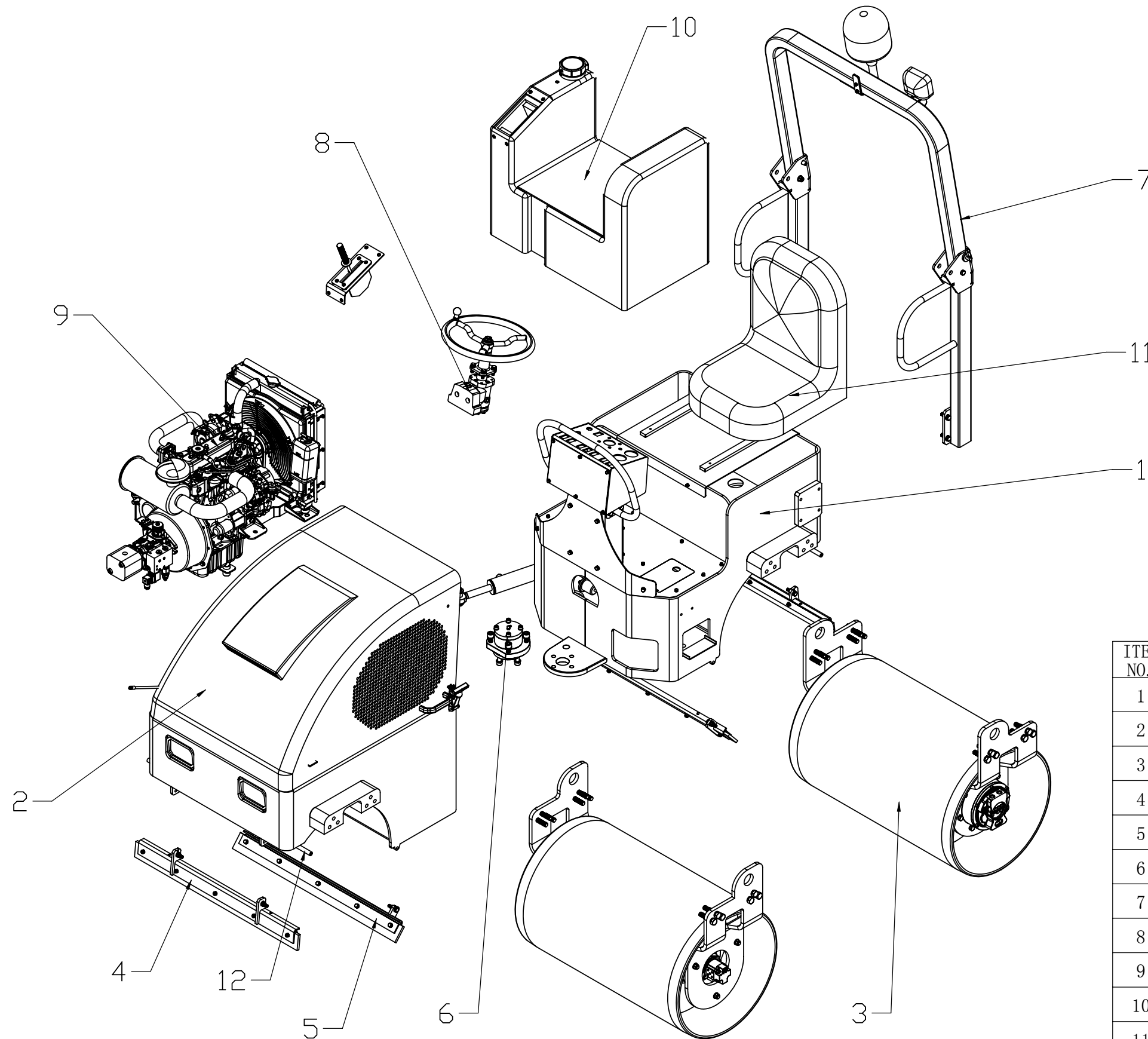


ROAD MASTER 900K

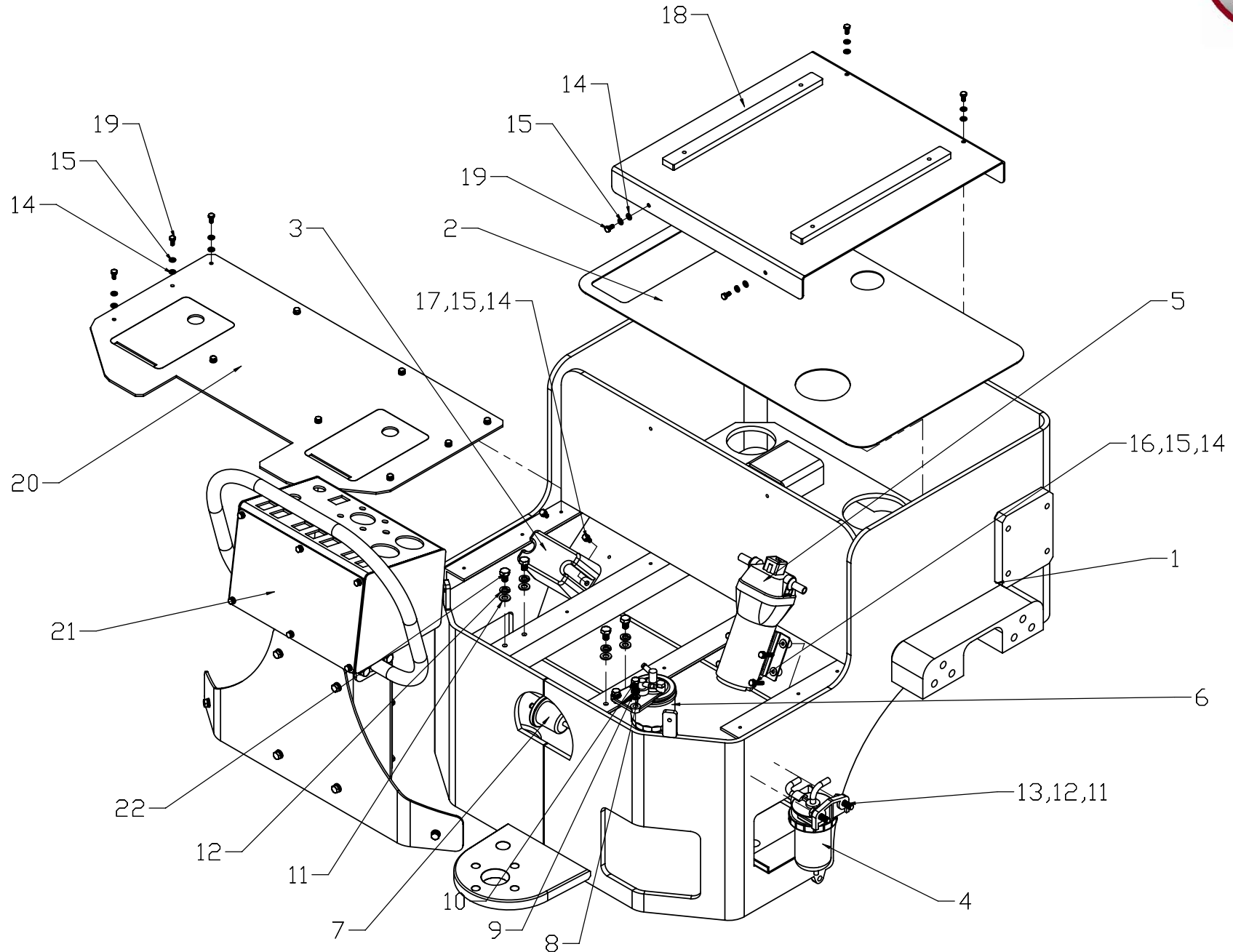


WHOLE ASSEMBLY EXPLODE VIEW

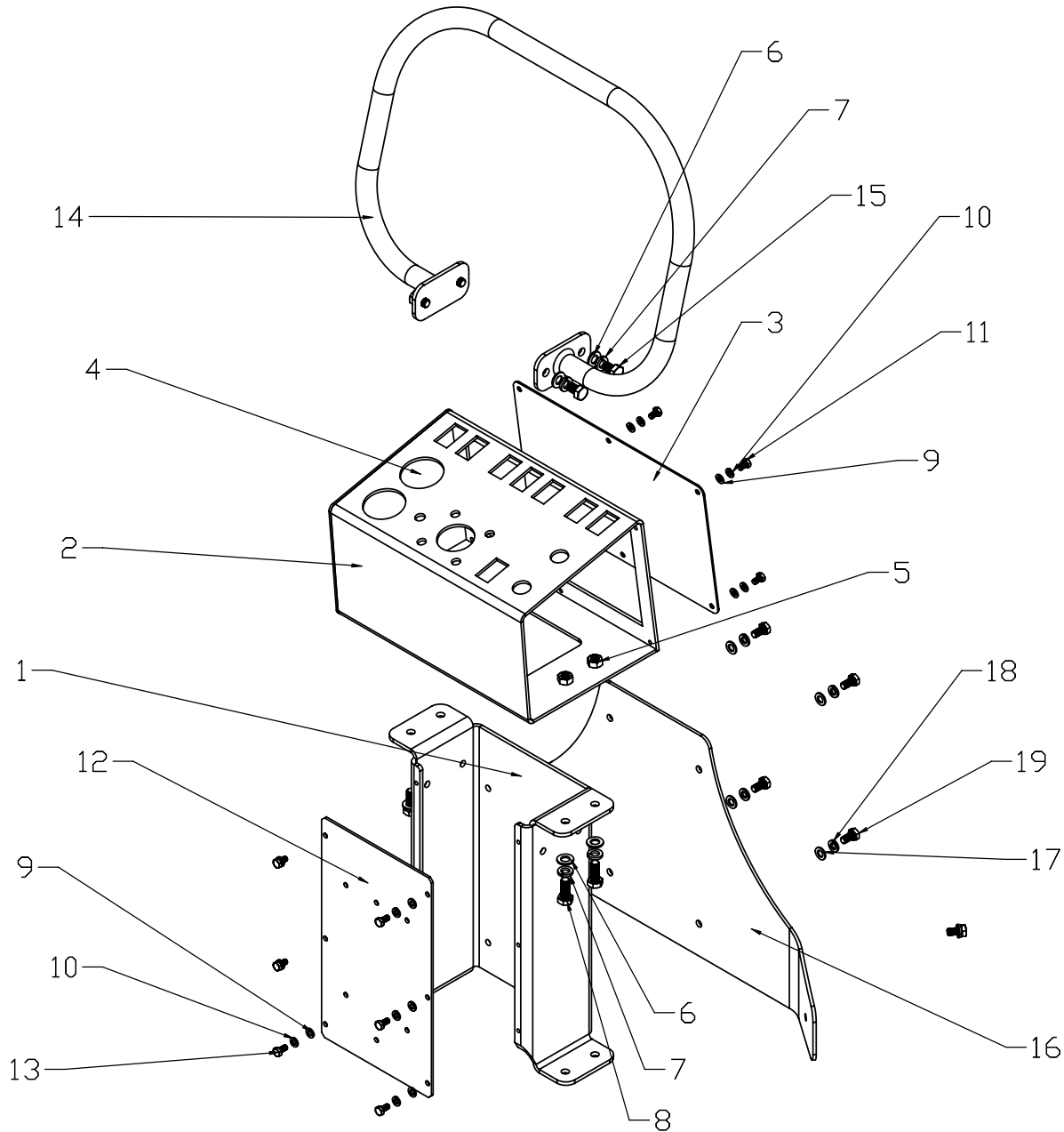


ITEM NO.	PART NUMBER	DESCRIPTION	QTY.
1	01-3191-1538-00	BACK FRAME ASSM	1
2	01-3191-1534-00	FRONT FRAME ASSM	1
3	01-3111-1544-00	DRUM VIB ASSM	2
4	01-3121-0016-00	SCRAPPER ASSEMBLY OUTER	2
5	01-3121-0017-00	SCRAPPER ASSEMBLY INNER	2
6	01-3181-0136-00	ARTICULATION JOINT ASSM	1
7	01-3141-1545-00	ROPS ASSM	1
8	01-2161-1536-00	STEERING ASSM	1
9	01-1151-1530-00	ENGINE COMPARTMENT ASSM	1
10	01-3201-1541-00	WATER TANK ASSM	1
11	01-3000-0096-01	SEAT	1
12	01-4001-1546-00	SPRINGER PIPE ASSM	2

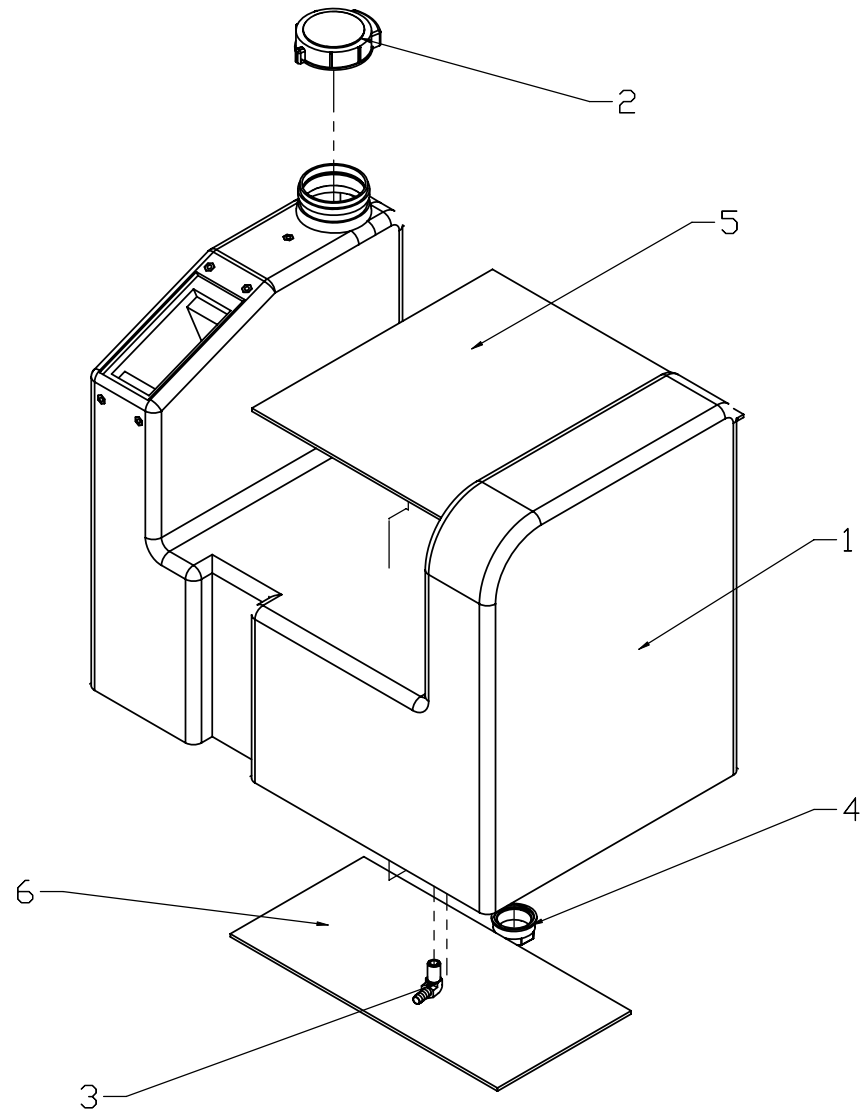
BACK FRAME ASSEMBLY BOM



CONTROL PANEL ASSMEMBLY BOM

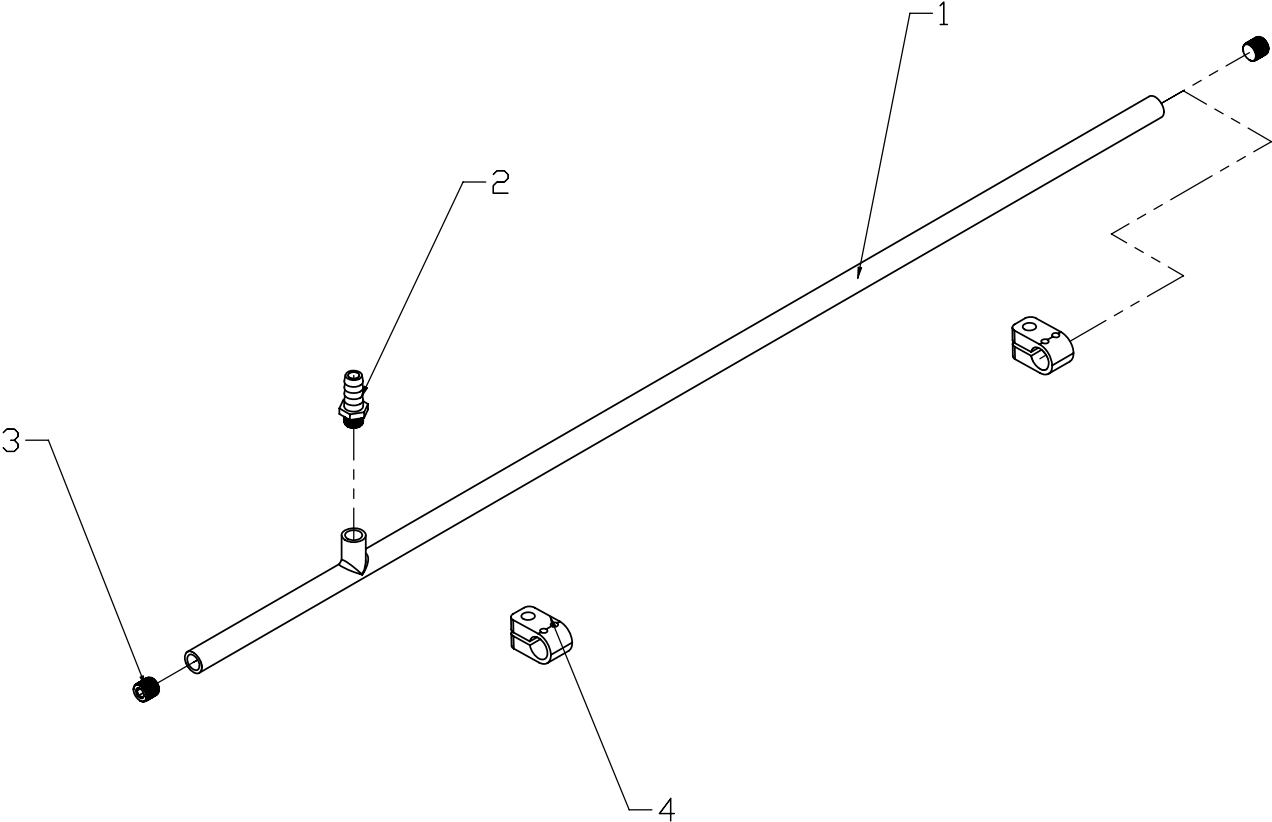


WATER TANK ASSM BOM



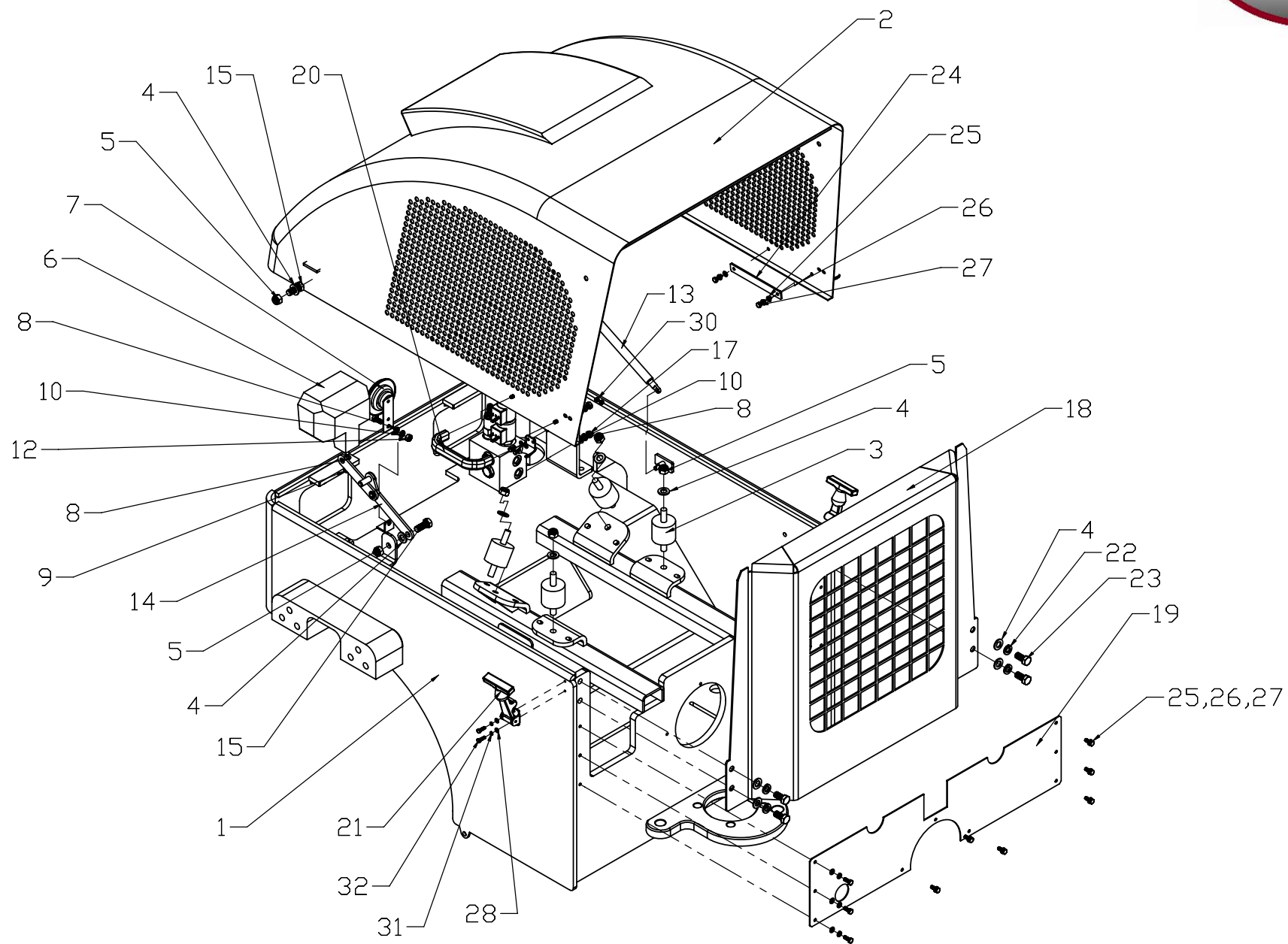
ITEM NO.	PART NUMBER	DESCRIPTION	QTY.
1	01-3200-1539-00	WATER TANK	1
2	water tank lip	WATER TANK LIP	1
3	HCC20A-030414	WATER TANK TIR-IN	1
4	CPT90BII-000002	WATER TANK CAP	1
5	01-3200-1542-01	WATER TANK DAMPER	1
6	01-3200-1543-01	WATER TANK DAMPER	1

SPRINGLER PIPE ASSM BOM

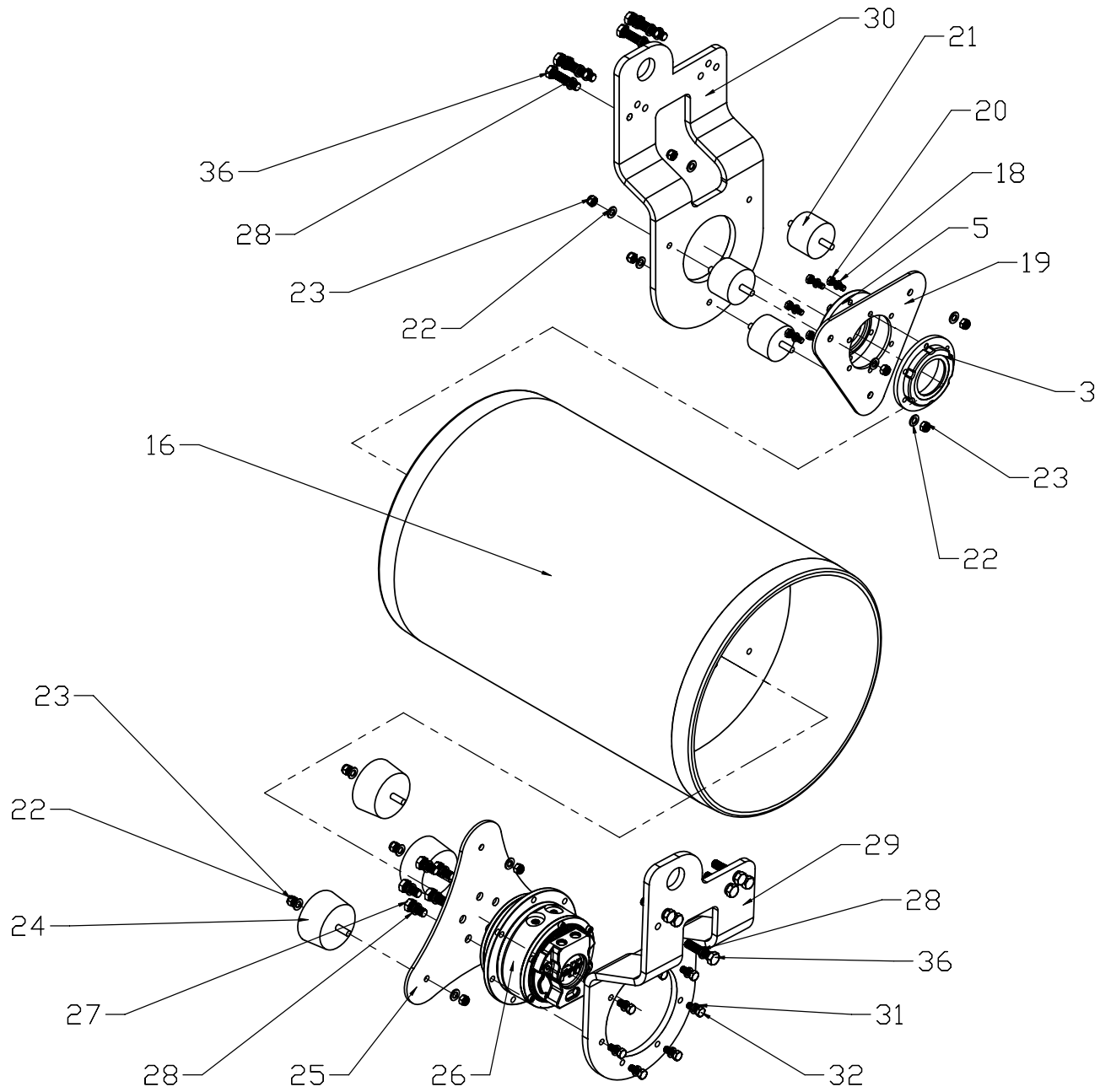


ITEM NO.	PART NUMBER	DESCRIPTION	QTY.
1	01-4001-0204-00	900mm SPRINGLER TUBE	1
2	CPT-BT-1 / 4-12	HOSE NIPPLE	1
3	HSHOS. B-G1-4	HEXAGONAL SOCKET HEAD PLUG	2
4	CPT90P-010901	HOOP	2

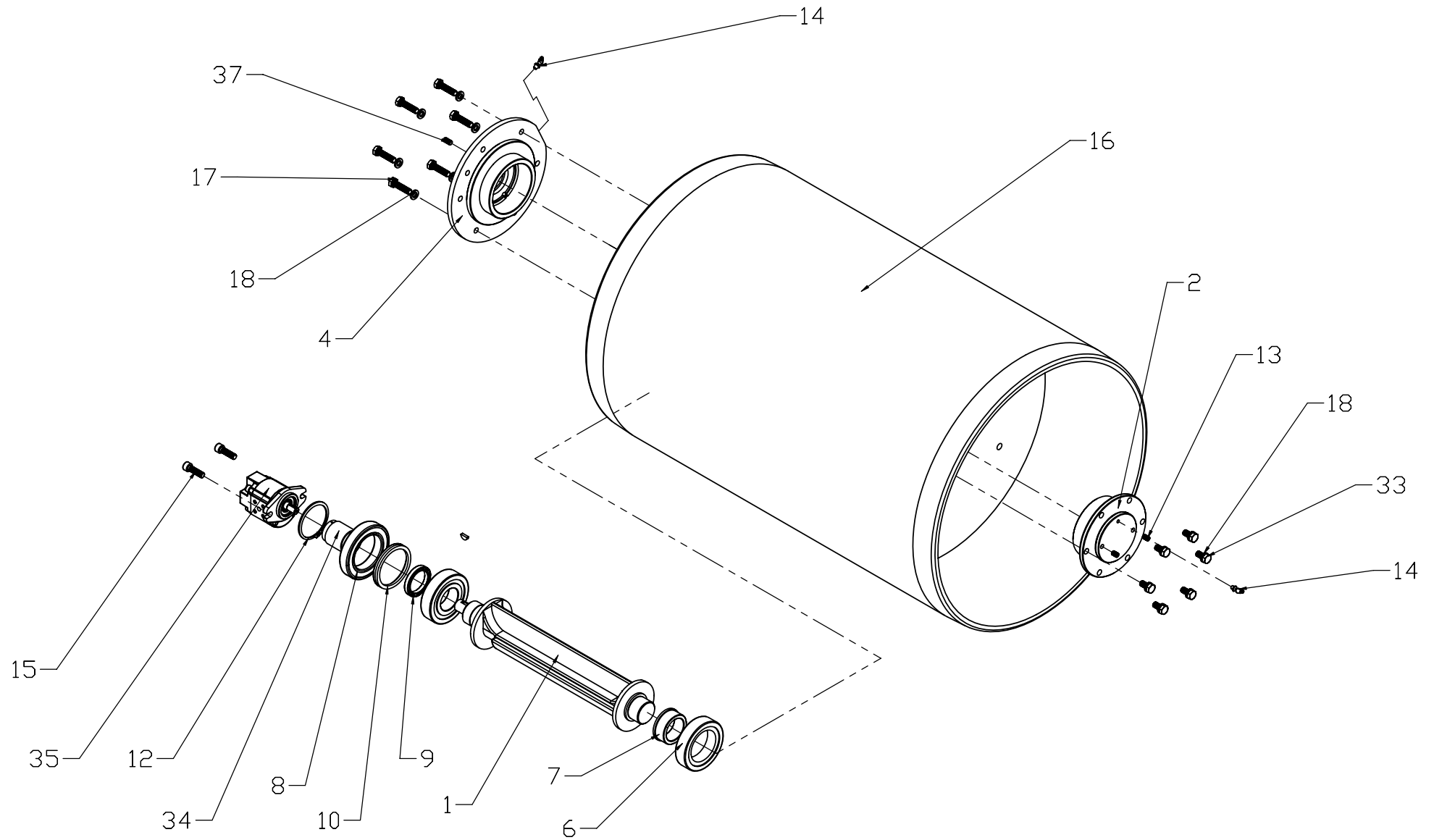
FRONT FRAME ASSM BOM



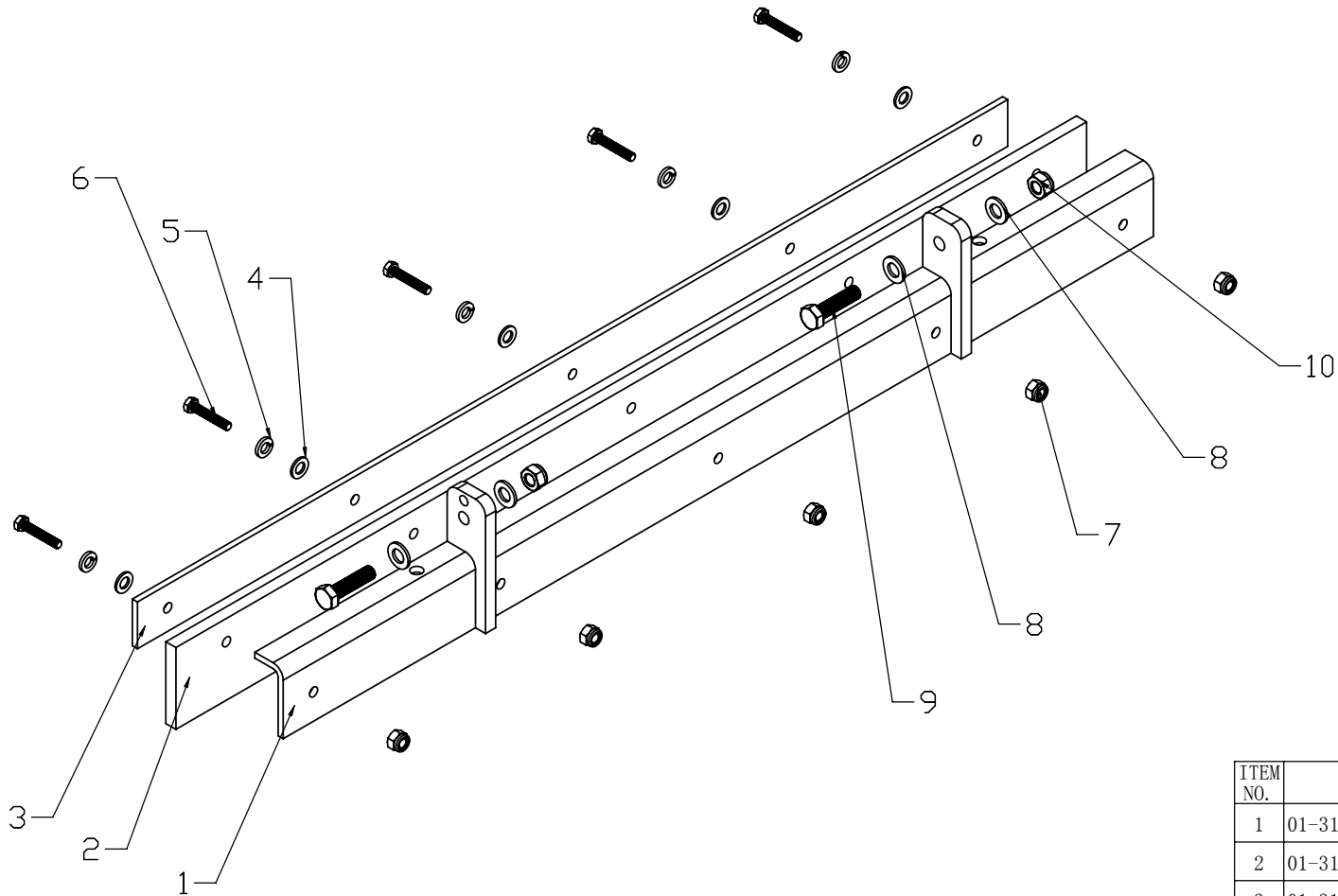
DRIVE SYSTEM BOM



VIBRATION SYSTEM BOM

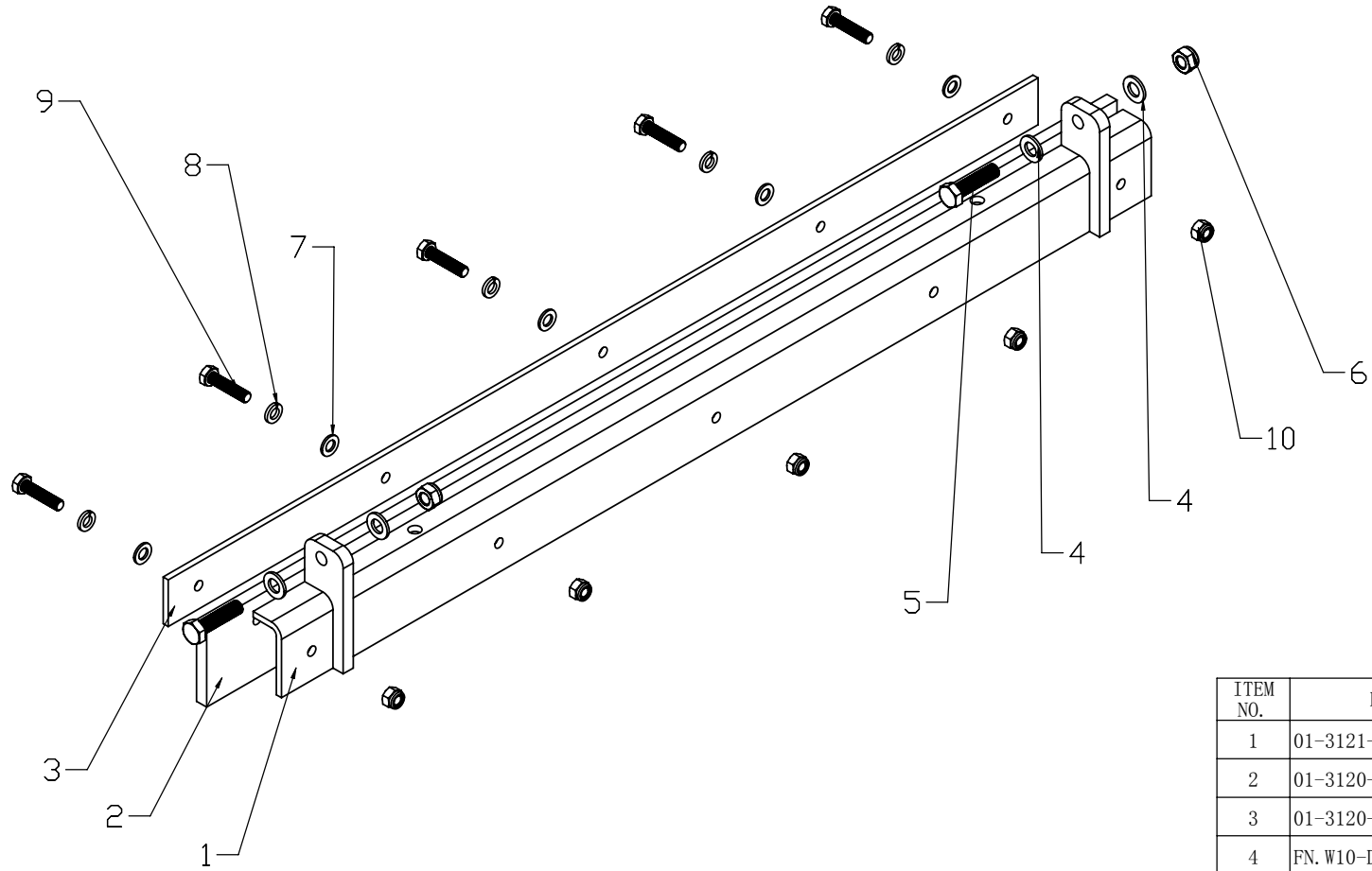


OUTER SCRAPPER ASSM BOM



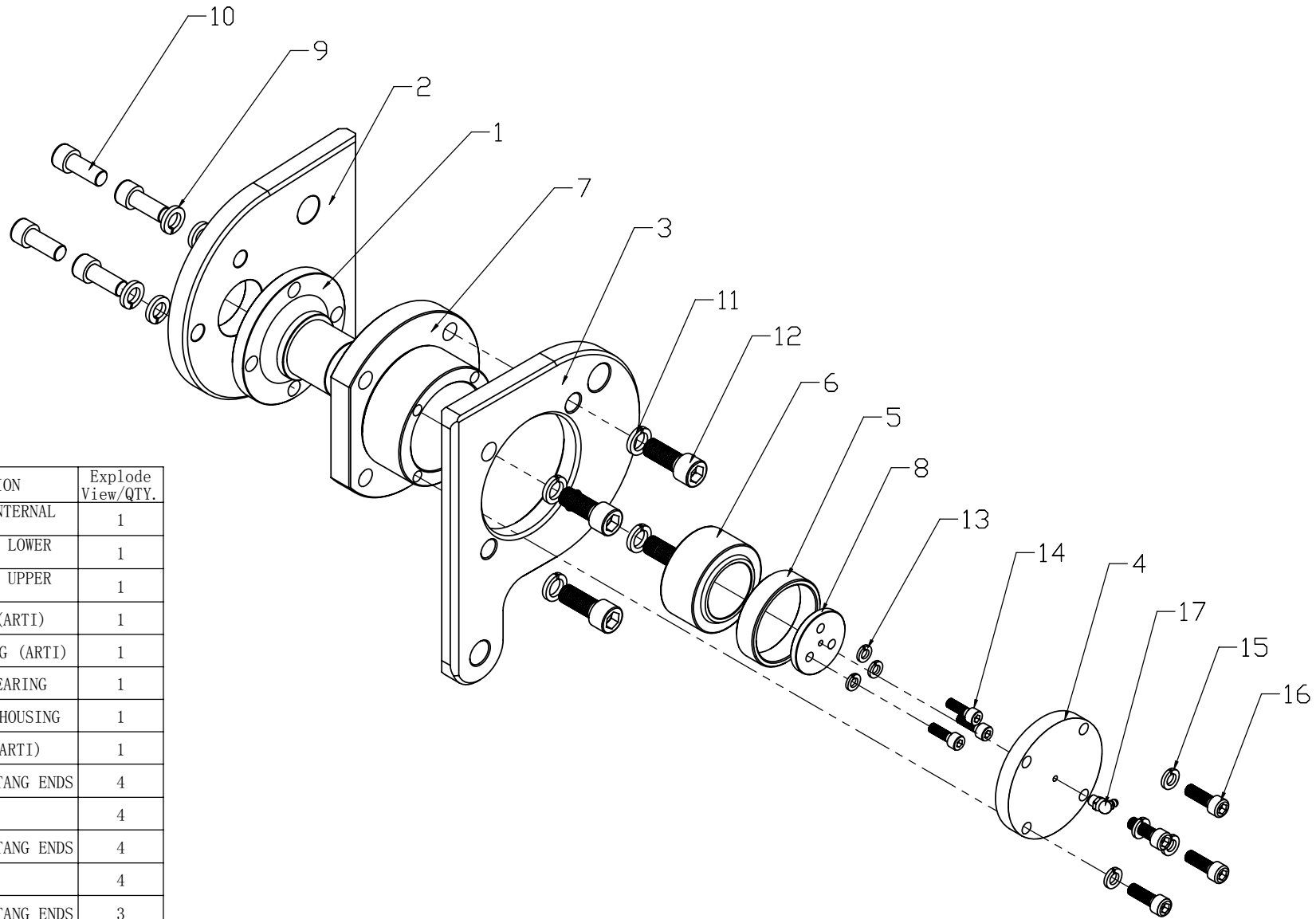
ITEM NO.	PART NUMBER	DESCRIPTION	explode view/QTY.
1	01-3121-0034-00	OUTER SCRAPPER FRAME	1
2	01-3120-0005-01	SCRAPPER RUBBER	1
3	01-3120-0006-00	SCRAPPER RUBBER BKT	1
4	FN. W8-DIN-1	WASHER	5
5	HSPG. W8-DIN-1	SPRING WASHER, TANG ENDS	5
6	FN. B-M6x35-8. 8-DIN-1	BOLT	5
7	IN. N-M8-DIN-1	LOCK NUT	5
8	FN. W10-DIN-1	WASHER	4
9	FN. B-M10x40-8. 8-DIN-1	BOLT	2
10	IN. N-M10-DIN-1	LOCK NUT	2

INNER SCRAPER ASSM BOM



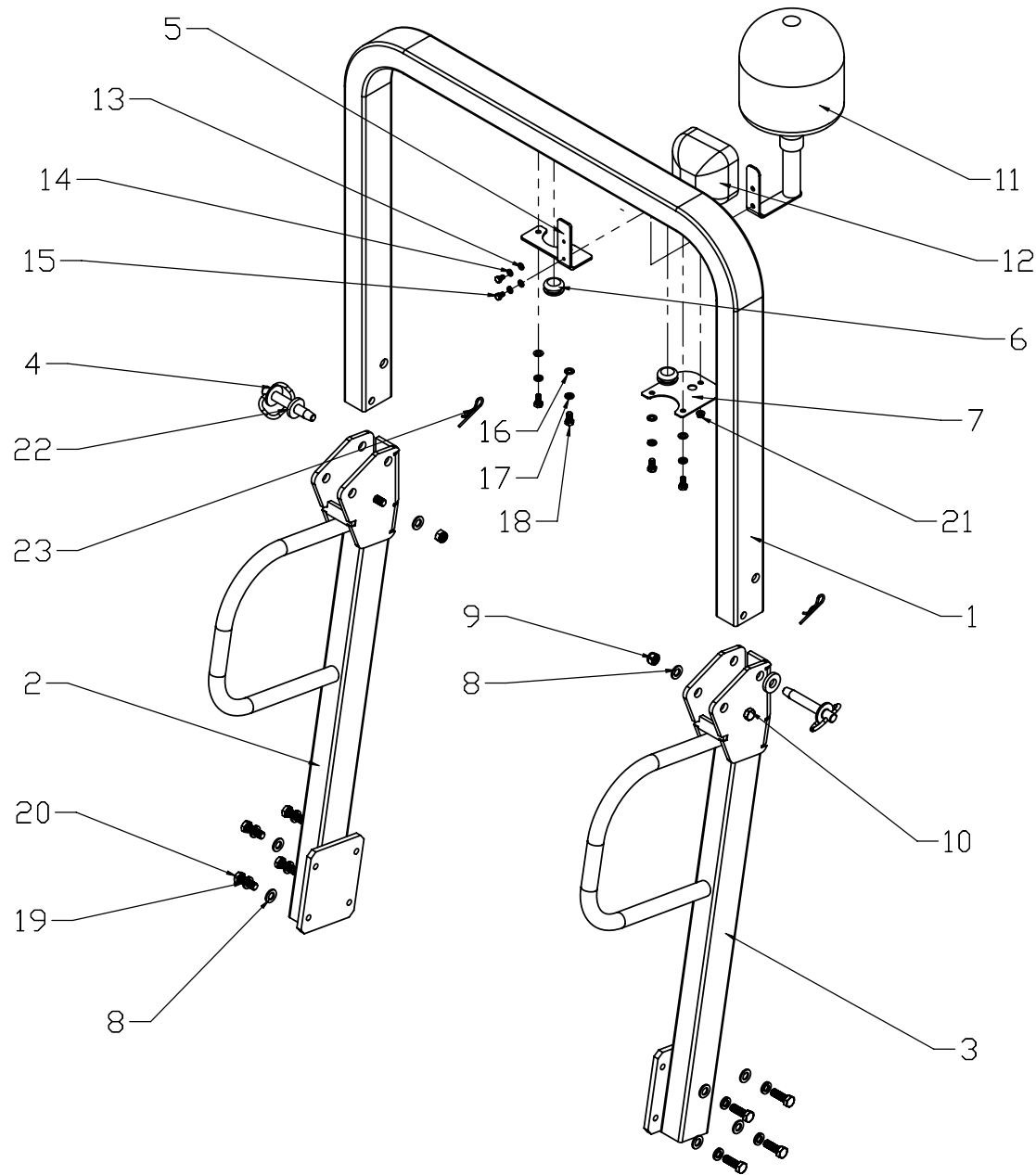
ITEM NO.	PART NUMBER	DESCRIPTION	Explode View/QTY.
1	01-3121-0013-00	INNER SCRAPER FRAME	1
2	01-3120-0005-01	SCRAPPER RUBBER	1
3	01-3120-0006-00	SCRAPPER RUBBER BKT	1
4	FN. W10-DIN-1	WASHER	4
5	FN. B-M10x40-8. 8-DIN-1	BOLT	2
6	IN. N-M10-DIN-1	LOCK NUT	2
7	FN. W8-DIN-1	WASHER	5
8	HSPG. W8-DIN-1	SPRING WASHER, TANG ENDS	5
9	FN. B-M8x35-8. 8-DIN-1	BOLT	5
10	IN. N-M8-DIN-1	LOCK NUT	5

ARTICULATION ASSM BOM



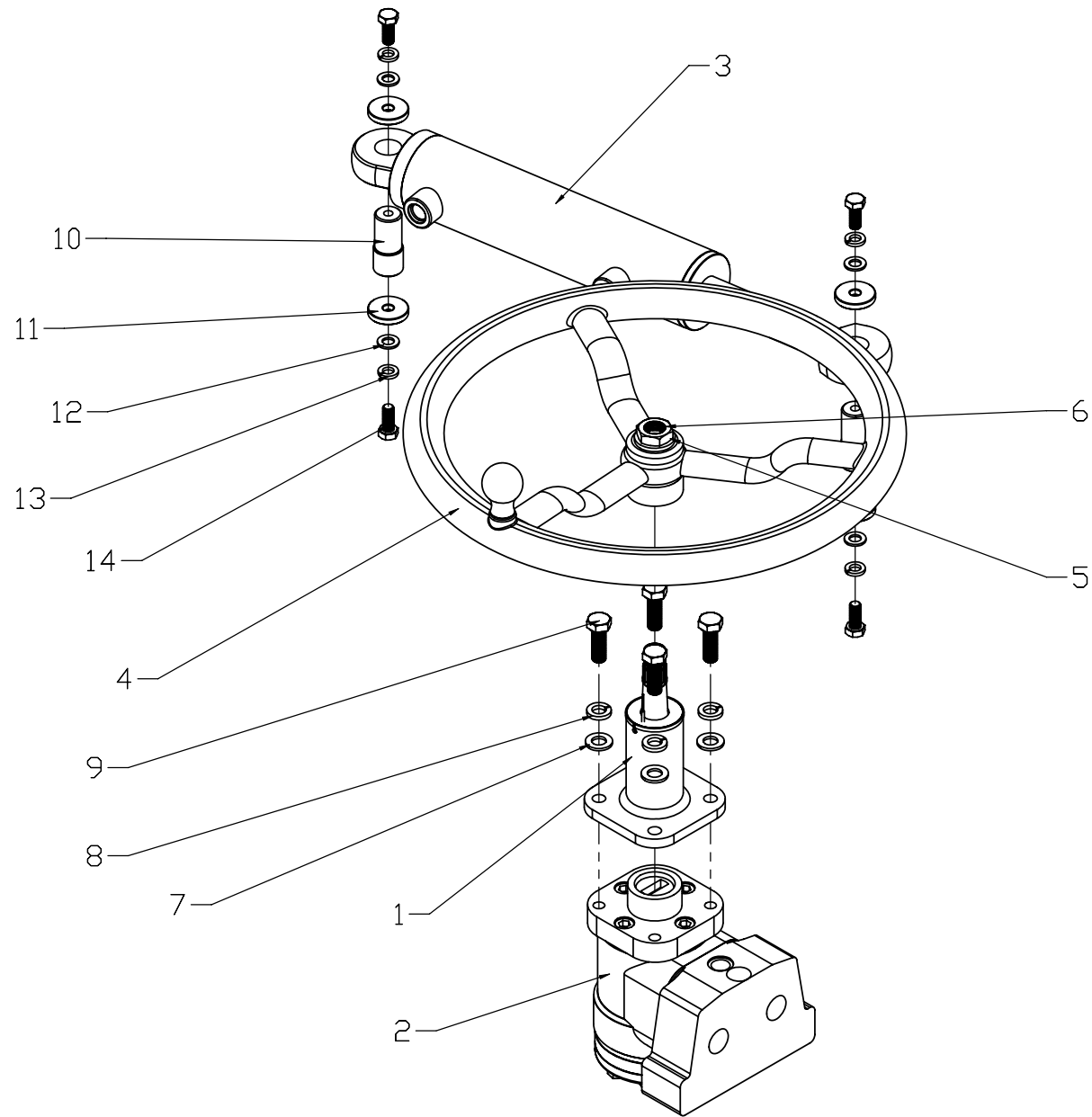
ITEM NO.	PART NUMBER	DESCRIPTION	Explode View/QTY.
1	01-3180-0074-00	ARTI JOINT INTERNAL SHAFT	1
2	01-3180-0077-00	ARTICULATION LOWER PLATE	1
3	01-3180-0076-00	ARTICULATION UPPER PLATE	1
4	01-3180-0069-00	MAIN COVER (ARTI)	1
5	01-3180-0070-00	SUPPORTING RING (ARTI)	1
6	01-3180-0092-01	SPHERICAL BEARING	1
7	01-3180-0186-00	ARTICULATION HOUSING	1
8	01-3180-0072-00	TOP COVER (ARTI)	1
9	HSPG. W14-DIN-1	SPRING WASHER, TANG ENDS	4
10	HS. B-M14x35-12. 9-GB-3	SCREW	4
11	HSPG. W16-DIN-1	SPRING WASHER, TANG ENDS	4
12	HS. B-M16x40-12. 9-GB-3	SCREW	4
13	HSPG. W8-DIN-1	SPRING WASHER, TANG ENDS	3
14	HS. B-M8x25-12. 9-GB-3	SCREW	3
15	HSPG. W10-DIN-1	SPRING WASHER, TANG ENDS	4
16	HS. B-M10x30-12. 9-GB-3	SCREW	4
17	01-3130-0162-01	90 DEG GREASE FITTING	1

ROPS ASSEMBLY BOM



ITEM NO.	PART NUMBER	DESCRIPTION	EXPLODE VIEW/QTY.
1	01-3140-0037-00	ROPS BEND	1
2	01-3141-0044-00	ROPS STRAIGHT (R) ASSM	1
3	01-3141-0043-00	ROPS STRAIGHT (L) ASSM	1
4	01-3141-1411-00	ROPS PIN SET	2
5	01-3150-1253-00	BEACON LIGHT BKT	1
6	01-3140-1414-00	WIRE PROTECTION RING	2
7	01-3150-1252-00	BACK LIGHT BKT	1
8	FN. W12-DIN-1	WASHER	10
9	IN. N-M12-DIN-1	LOCK NUT	2
10	FN. B-M12x90-8. 8-DIN-1	BOLT	2
11	01-5150-1417-01	BEACON LIGHT	1
12	01-5150-1418-01	BACK LIGHT	1
13	FN. W6-DIN-1	WASHER	2
14	HSPG. W6-DIN-1	SPRING WASHER, TANG ENDS	2
15	FN. B-M6x10-8. 8-DIN-1	BOLT	2
16	FN. W8-DIN-1	WASHER	4
17	HSPG. W8-DIN-1	SPRING WASHER, TANG ENDS	4
18	FN. B-M8x16-8. 8-DIN-1	BOLT	4
19	HSPG. W12-DIN-1	SPRING WASHER, TANG ENDS	8
20	FN. B-M12x35-8. 8-DIN-1	BOLT	8
21	HF. N-M6-DIN-1	HEXAGON FLANGE NUT	1
22	01-3140-1412-00	ROPS PIN DUMPER	2
23	01-3140-0155-01	COTTER PIN	2

STEERING SYSTEM ASSEMBLY BOM



ENGINE COMPARTMENT ASSM BOM

