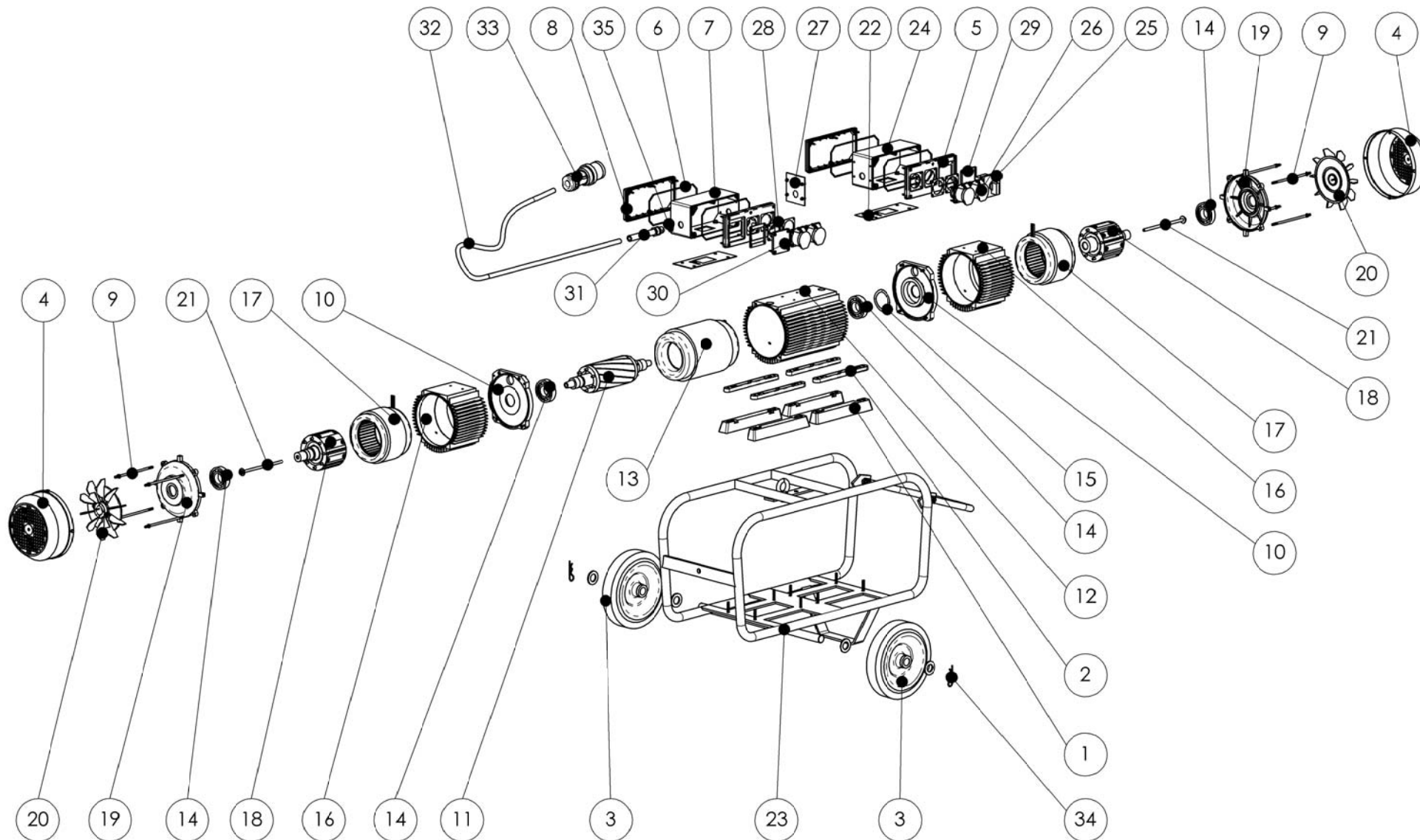


# FUZ64-T SERVICE PARTS

PACLI10.095



PACLITE		Rev. nº 0	
SPARE PARTS LIST		Date: 11/05/2009	
HIGH FREQUENCY CONVERTER TRIPHASE 400V 50Hz FUZ64 - T (YELLOW)			PACLI 10.095
QTY.	DENOMINATION	DRAW Nº	CODE
4	BOTTOM RUBBER	1	PACLI 56.059
4	BOTTOM RUBBER BRACKET	2	PACLI 30.113.1
2	WHEEL Ø 250x60	3	PACLI 45.005
2	FAN COVER	4	PACLI 48.010
1	PLASTIC BOX COVER (SWITCH + SOCKETS)	5	PACLI 30.228.1
4	JOINT RUBBER PLASTIC BOX COVER DIAM. 3x580	6	PACLI 76.067
1	PLASTIC BOX CONNECTOR (CONNECTION CABLE)	7	PACLI 30.245.1
2	BLIND PLASTIC BOX CONNECTOR COVER	8	PACLI 30.239.1
8	BOLT JOINT M6x172	9	PACLI 84.125
2	HOUSING FIXATION SUPPORT COVER (GENERATOR - MOTOR)	10	PACLI 30.244.1
1	ROTOR SET (MOTOR)	11	PACLI 26.090
1	MOTOR HOUSING	12	PACLI 30.243.1
1	ASSY STATOR MOTOR COP.	13	PACLI 24.115
4	BEARING 6207 2 NSE 35.72.17	14	PACLI 75.045
1	COMPENSATION WAVY WASHER Ø 72	15	PACLI 78.056
2	GENERATOR HOUSING	16	PACLI 30.242.1
2	ASSY STATOR GENERATOR COP.	17	PACLI 24.075
2	ROTOR SET (GENERATOR)	18	PACLI 26.053
2	GENERATOR BEARING	19	PACLI 30.170.1
2	FAN WITH HOSE CLAMP	20	PACLI 33.006
2	BOLT JOINT ROTOR SET	21	PACLI 84.126
1	PLASTIC JOINT RUBBER BOX	22	PACLI 76.072
1	CHASSIS + WHEELS	23	P0ACLI 53.512
1	PLASTIC BOX CONNECTOR (SWITCH)	24	PACLI 30.246.1
1	3 PHASE SWITCH MO-F35-B-SI	25	PACLI 66.030
4	SWITCH SOCKET 50V 32A	26	PACLI 65.005
1	SEAL PLASTIC BOX CONNECTOR	27	PACLI 76.073
4	SOCKET JOINT	28	PACLI 56.018
2	SWITCH JOINT	29	PACLI 56.040
1	SWITCH COVER	30	PACLI 30.229.1
1	PACKING PLASTIC BOX CONNECTOR M25x1,5	31	PACLI 62.099
1	CONNECTION CABLE 4x4	32	PACLI 60.116.H07.5
1	CETAC PLUG 3P+N+T 32A	33	PACLI 65.029
2	PIN R Ø 3mm (WHEEL)	34	PACLI 80.004
1	METALLIC NUT M25	35	PACLI 62.100