

## RM900D -ROADMASTER900

## RIDE ON ROLLER ASSEMBLY BOM

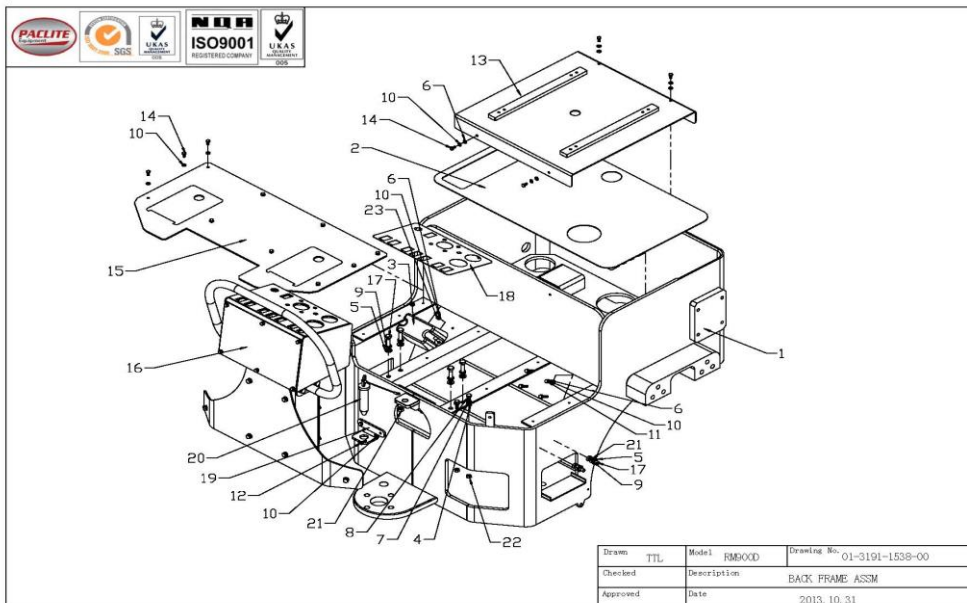
NO.	PART NO.	PART DESCRIPTION	QTY.	REMARKS
01	01-3191-1538-00	BACK FRAME ASSM	1	
01-1	01-3201-0191-00	FUEL TANK ASSM		
02	01-3191-1534-00	FRONT FRAME ASSM	1	
02-1	01-2201-1227-00	HYDRAULIC TANK ASSM		
02-2	01-5151-2556-00	BATTERY ASSM		
03	01-3111-1544-00	DRUM VIBRATION ASSM	2	
04	01-3121-0016-00	SCRAPPER ASSM OUTER	2	
05	01-3121-0017-00	SCRAPPER ASSM INNER	2	
06A	01-3181-0136-00	ARTICULATION JOINT ASSM	1	
06B	01-3181-1440-00	ARTI ARM ASSM	1	
07	01-3141-1526-00	ROPS ASSM	1	
08	01-2161-1536-00	STEERING ASSM	1	
09	01-1151-1530-00	ENGINE COMPARTMENT ASSM	1	
10	01-4001-2557-00	SPRINKLER SYSTEM ASSM	1	
11	01-3000-0096-01	OPERATOR SEAT	1	
12	01-2211-2563-01	HYDRAULIC LINE ASSM	1	
	01-2211-1455-01	HYDRAULIC HOSE SET		
	01-2211-1481-01	HYDRAULIC CONNECTOR SET		
13	01-5151-2564-01	ELECTRICAL WIRING ASSM	1	
	01-5151-2566-01	ELECTRICAL SWITCH AND ACCESSORIES		
	01-5000-1247-01	ELECTRICAL HARDNESS		
14	01-6001-2565-01	LOGO	1	

01) BACK FRAME ASSEMBLY BOM  
(01-3191-1538-00)

NO.	PART NO.	PART DESCRIPTION	QTY.	UNIT PRICE (EUR) 2013
1	01-3191-1537-00	BACK FRAME WELDING	1	1367,15
	01-3190-0071-00	BACK PLATE	1	
	01-3190-0116-00	BACK GROUND PLATE	1	
	01-3190-0119-00	ANGLE BAR (LONG)	2	
	01-3190-0120-00	ANGLE BAR (SHORT)	2	
	01-3190-0117-00	PLATE (SIDE TANK)	1	
	01-3190-0121-00	WATER TANK SUPPORT	2	
	01-3190-1236-00	WATER FILTER BKT	1	
	01-3190-1237-00	DIESEL FILTER BKT	1	
	01-3190-0206-00	PLATE (FOOT STEP)	2	
	01-3190-0223-00	CYLINDER HOLDING PLATE	1	
	01-3190-1520-00	BRACKET (FOOT PLATE COVER)	2	
	01-3180-0077-00	ARTICULATION LOWER PLATE	1	
	01-3110-0029-00	DRUM SUPPORT BLOCK	2	
	01-3121-0174-00	SCRAPPER ATTM ASSM (L)	1	
	01-3120-0172-00	SCRAPPER CONNECT (L)	1	
	01-3120-0170-00	CLAMP CONNECTOR	1	
	01-3120-0171-00	SPRING CONNECTOR	1	
	01-3121-0175-00	SCRAPPER ATTM ASSM (R)	1	
	01-3120-0173-00	SCRAPPER CONNECT (R)	1	
	01-3120-0170-00	CLAMP CONNECTOR	1	
	01-3120-0171-00	SPRING CONNECTOR	1	
	01-3140-0038-00	ROPS BLOCK	2	
	01-3191-1437-10	ARTI ARM SUPPORT	1	
	01-3190-1438-00	ARTI ARM SUPPORT S PLATE	1	
	01-3190-1439-10	ARTI ARM SUPPORT T PLATE	2	
	01-3190-1549-00	BAR (WELDING SUPPORT)	2	
2	01-3190-0128-01-A	PLATE (BELOW WATER TANK)	1	Price Include 01-3191-1537-00
3	01-5150-0081-01	BACK ALARM	1	198,54
4	FN.W8-DIN-1	WASHER	2	0,36
5	FN.W10-DIN-1	WASHER	6	0,16
6	FN.W6-DIN-1	WASHER	10	0,16
7	HSPG.W8-DIN-1	SPRING WASHER,TANG ENDS	2	0,36
8	FN.B-M8x25-8.8-DIN-1	BOLT	2	0,20
9	HSPG.W10-DIN-1	SPRING WASHER,TANG ENDS	6	0,16
10	HSPG.W6-DIN-1	SPRING WASHER,TANG ENDS	20	0,16
11	FN.B-M6x30-8.8-DIN-1	BOLT	4	0,12
12	FN.B-M6x16-8.8-DIN-1	BOLT	2	0,16
13	01-3191-1540-10	PLATE (TANK COVER) WELDING	1	129,30
	01-3190-0118-00	PLATE (TANK COVER)	1	
	01-3190-0221-10	SEAT BRACKET	2	
14	FN.B-M6x12-8.8-DIN-1	BOLT	14	0,24
15	01-3191-0209-00	FOOT PLATE ASSM	1	

# 01) BACK FRAME ASSEMBLY BOM (01-3191-1538-00)

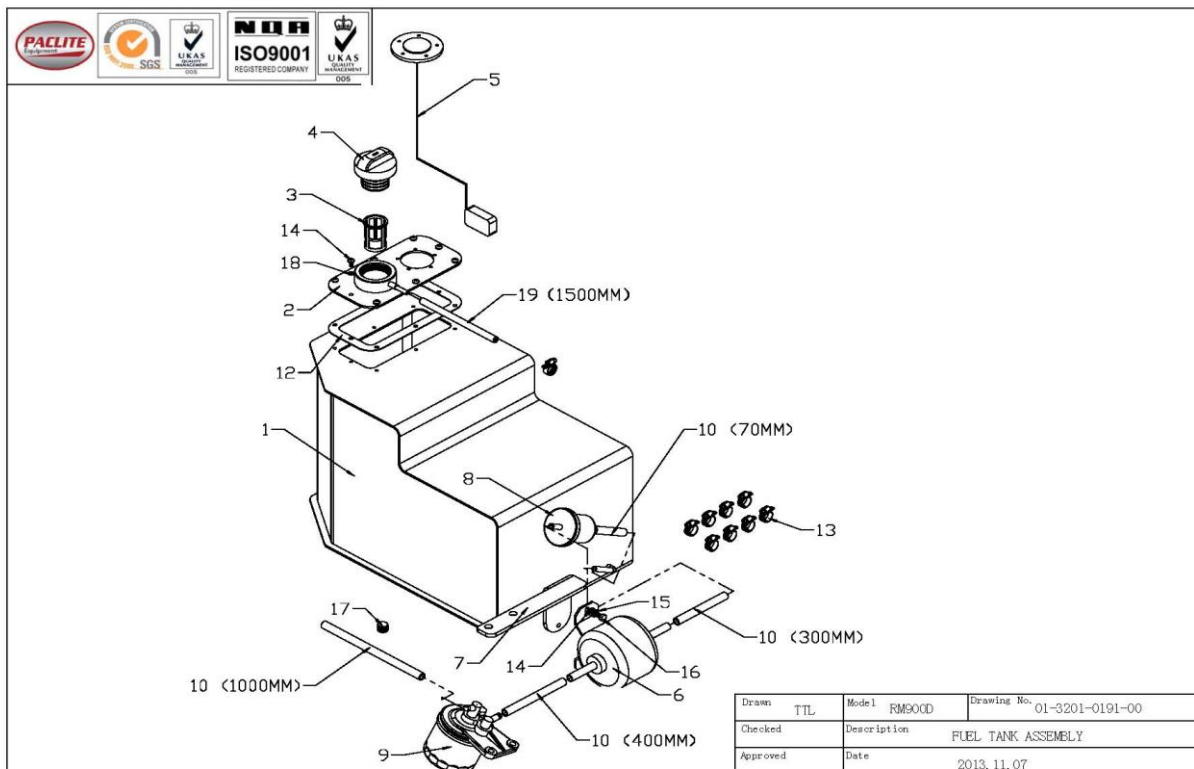
NO.	PART NO.	PART DESCRIPTION	QTY.	UNIT PRICE (EUR) 2013
	01-3190-0166-10	PLATE (FOOT)	1	148,54
	01-3190-0207-10	PLATE (FOOT) WINDOW	2	
	01-3190-0208-00	PLATE (FOOT) WINDOW SUPPORT	2	
	01-3190-0214-01	HINGE (FOOT PLATE)	2	
16	01-3191-1535-00	CONTROL PANEL ASSM	1	74,27
	01-3190-0177-10	BASE PANEL BOARD	1	93,69
	01-3190-0178-00	TOP PANEL BOARD	1	111,66
	01-3190-0179-00	TOP PANEL BACK COVER	1	29,08
	01-3190-0180-00	TOP PANEL SIDE COVER	2	Price Include 01-3190-0178-00
	FN.N-M10-DIN-1	NUT	4	0,16
	FN.W10-DIN-1	WASHER	8	0,16
	HSPG.W10-DIN-1	SPRING WASHER,TANG ENDS	8	0,16
	FN.B-M10x25-8.8-DIN-1	BOLT	4	0,24
	FN.W6-DIN-1	WASHER	12	0,16
	HSPG.W6-DIN-1	SPRING WASHER,TANG ENDS	12	0,16
	FN.B-M6x10-8.8-DIN-1	BOLT	6	0,16
	01-3190-0185-10	BASE PANEL BOARD COVER	1	35,20
	FN.B-M6x12-8.8-DIN-1	BOLT	6	0,24
	01-3191-1447-00	HANDLE ASSM	1	39,27
	01-3190-1449-00	HANDLE	1	
	01-3190-1448-00	HANDLE BKT	2	
	FN.B-M10x15-8.8-DIN-1	BOLT	4	0,24
	01-3190-0222-00	OPERATOR FOOT COVER	1	46,83
	FN.W8-DIN-1	WASHER	6	0,36
	HSPG.W8-DIN-1	SPRING WASHER,TANG ENDS	6	0,36
	FN.B-M8x16-8.8-DIN-1	BOLT	6	0,20
	D4-MP-P	NAMEPLATE	1	2,20
	K.RVT-3.2x7.1	RIVET	4	4,80
	01-3190-2619-00	FUSE BOX BKT	1	18,68
17	FN.B-M10x35-8.8-DIN-1	BOLT	6	0,28
18	01-6000-1307-01	CONTROL PANEL STRIKER	1	31,32
19	01-3190-2596-00	LOCK PIN BKT	1	12,32
20	01-3191-2592-00	LOCK PIN ASSM	1	26,36
	01-3190-2593-00	LOCK PIN	1	
	01-3190-2594-00	LOCK PIN TOP	1	
	01-3190-2595-00	LOCK PIN RING	1	
	01-3191-3627-00	LOCK PIN STRING	1	5,56
21	FN.N-M10-DIN-1	NUT	6	0,16
22	FN.N-M8-DIN-1	NUT	2	0,16
23	PAN.S-M6X12	PAN HEAD SCREW	2	0,24



# 01-1) FUEL TANK ASSEMBLY BOM

## (01-3201-0191-00)

NO.	PART NO.	PART DESCRIPTION	QTY.	UNIT PRICE (EUR) 2013
1	01-3201-1550-10	FUEL TANK WELDING	1	304,50
	01-3200-0192-10	FUEL TANK (UPPER)	1	
	01-3200-0193-00	FUEL TANK (LOWER)	1	
	01-3200-0195-00	FUEL TANK IN/OUT PIPE	1	
	ROL6.5-070107-1M-B	FUEL TANK DRAIN PORT	1	
2	01-3201-2610-00	FUEL TANK COVER WELD	1	40,50
	01-3200-2570-00	FUEL TANK TOP COVER	1	
	01-3200-0194-00	FUEL TANK INLET	1	
	01-3200-2615-00	FUEL RETURN PIPE	1	
3	RAM70B-010110	STRAINER	1	0,80
4	01-3150-1415-01	FUEL TANK CAP WITH LOCK	1	49,50
5	01-5150-1281-01	FUEL SENSOR	1	108,00
6	01-1150-1436-01	12V FUEL PUMP	1	102,00
7	01-1150-2617-00	ELECTRIC FUEL PUMP BKT	1	22,64
8	01-1150-1512-01	DIESEL FILTER 1	1	24,32
9	01-1151-0053-01	DIESEL FILTER 2	1	131,84
10	01-1150-1433-01	DIESEL PIPE	4	12,00
11	PAN.S-M5x10	PAN HEAD SCREW	8	0,20
12	01-3200-3648-01	GASKET 1	1	Price Include 01-3150-14151-00
13	01-2150-2555-01	Hose Clamp ( Dia 6-16)	9	1,44
14	FN.W6-DIN-1	WASHER	2	0,16
15	HSPG.W6-DIN-1	SPRING WASHER,TANG ENDS	2	0,16
16	FN.B-M6x12-8.8-DIN-1	BOLT	2	0,24
17	4BN-06WD	HEXAGONAL SOCKET HEAD PLUG	1	2,52
18	FN.W5-DIN-1	WASHER	8	0,16
19	01-1150-1434-01	DIESEL PIPE	1	0,40



## 02) FRONT FRAME ASSEMBLY BOM (01-3191-1534-00)

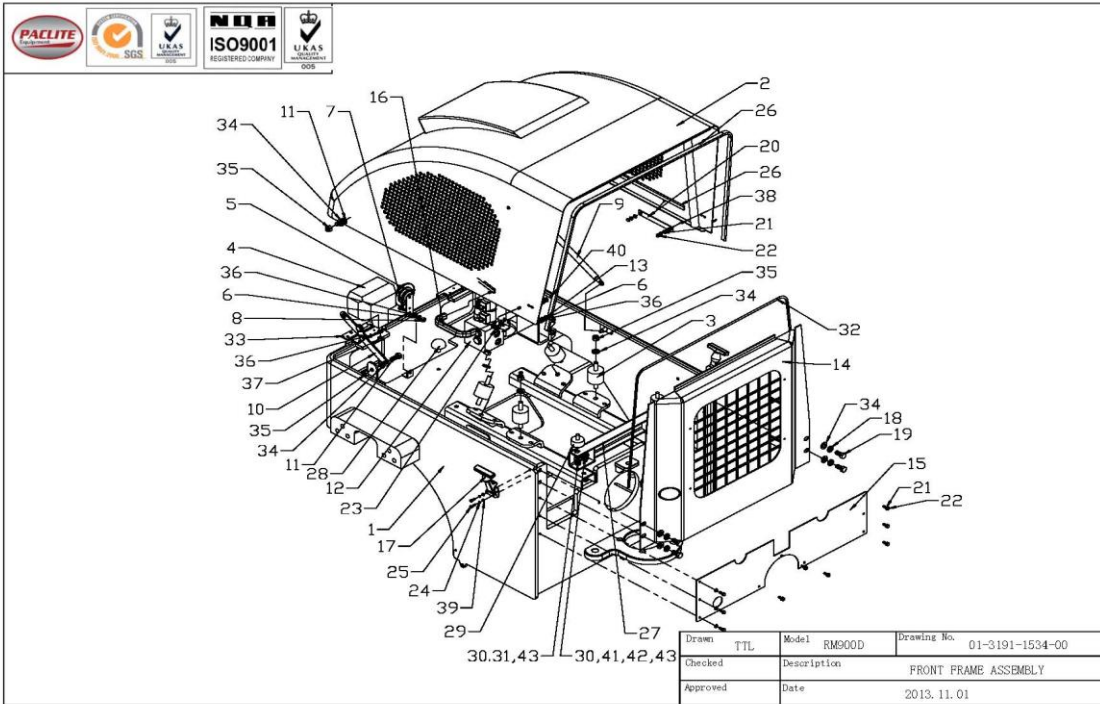
NO.	PART NO.	PART DESCRIPTION	QTY.	UNIT PRICE (EUR) 2013
1	01-3191-1531-00	FRONT FRAME WELDING	1	1901,07
	01-3190-0123-10	FRONT GROUND PLATE	1	
	01-3190-0152-00	FRONT PLATE	1	
	01-3190-0127-00	FRONT PLATE BACK COVER	1	
	01-3190-0124-10	ENGINE SUPPORT BAR	2	
	01-3190-1241-10	MANIFOLD HOLDER	1	
	01-3190-1442-00	HEAD LIGHT SUPPORT BKT	2	
	01-3121-0174-00	SCRAPPER ATTM ASSM (L)	1	
	01-3120-0172-00	SCRAPPER CONNECT (L)	1	
	01-3120-0170-00	CLAMP CONNECTOR	1	
	01-3120-0171-00	SPRING CONNECTOR	1	
	01-3190-1443-00	HORN SUPPORT BKT	1	
	01-3191-1444-00	HOOD LATCH SUPPORT	2	
	01-3191-0153-00	ENGINE MOUNTING BASE (A)	2	
	01-3190-0138-00	ENGINE MOUNTING BKT1	1	
	01-3190-0143-00	MOUNTING SUPPORT BKT1	2	
	01-3191-0154-00	ENGINE MOUNTING BASE (S)	2	
	01-3190-0137-00	ENGINE MOUNTING BKT2	1	
	01-3190-0144-00	MOUNTING SUPPORT BKT2	2	
	01-3180-0076-00	ARTICULATION UPPER PLATE	1	
	01-3110-0029-00	DRUM SUPPORT BLOCK	2	
	01-3190-1242-10	BATTERY SUPPORT BKT	1	
	01-3190-1441-00	BATTERY SUPPORT ANGLE BAR	1	
	01-3191-1533-00	GAS SPRING BKT 2	1	
	01-3190-1263-00	HOOD BKT 2	1	
	01-3121-0175-00	SCRAPPER ATTM ASSM (R)	1	
	01-3120-0173-00	SCRAPPER CONNECT (R)	1	
	01-3120-0170-00	CLAMP CONNECTOR	1	
	01-3120-0171-00	SPRING CONNECTOR	1	
	01-3191-1437-10	ARTI ARM SUPPORT	1	
2	01-3191-1524-00	HOOD ASSEMBLY	1	634,43
	01-3190-0156-00	ENGINE HOOD	1	
	01-3190-1299-00	AIR VENT	1	
	01-3190-1523-00	HOOD SUPPORT RIB	1	
	01-3191-1532-00	GAS SPRING BKT 1	1	
	01-3190-1262-00	HOOD BKT 1	1	
	01-3190-1553-00	LATCH WELDING SUPPORT	2	
	01-3191-0089-01	ENGINE HOOD HINGE	2	
	01-3190-1554-00	HOOD SUPPORT PIPE	1	
3	CPT90B-030100	ENGINE SHOCK MOUNT	4	19,64
4	01-5150-0078-01	HEAD LIGHT	2	130,44
5	01-5150-1425-01	VEHICLE HORN	1	58,50
6	HSPG.W8-DIN-1	SPRING WASHER,TANG ENDS	5	0,36
7	FN.B-M8x16-8.8-DIN-1	BOLT	1	0,20
8	FN.N-M8-DIN-1	NUT	1	0,16
9	01-3150-0083-01	GAS SPRING	1	72,81

## 02) FRONT FRAME ASSEMBLY BOM (01-3191-1534-00)

NO.	PART NO.	PART DESCRIPTION	QTY.	UNIT PRICE (EUR) 2013
10	01-3191-1298-00	HOOD SUPPORTING MECHANISM	1	Cancelled
	01-3190-1265-00	HOOD BKT4	1	
	01-3190-1264-00	HOOD BKT3	1	
	01-3190-1266-00	HOOD BKT PIN LONG	1	
	01-3190-1267-00	HOOD BKT PIN SHORT	1	
11	FN.B-M12x30-8.8-DIN-1	BOLT	4	0,36
12	01-2171-1454-01	MANIFOLD SYSTEM	1	1048,55
	01-2170-0062-01	VALVE ASSM		
	01-2170-0063-01	BLOCK		
	01-2170-0064-11	SOLENOID VALVE		
	01-2170-0065-01	RELIEF VALVE		
	01-2170-0066-11	CHECK VALVE		
13	FN.B-M8x20-8.8-DIN-1	BOLT	4	0,20
14	01-3191-2584-10	RADIATOR COVER W PIPE	1	138,26
	01-3190-0169-20	RADIATOR COVER		
	01-3190-0176-00	RADIATOR COVER BASE		
	01-3190-2583-00	AIR INLET PIPE		
	01-3190-3210-00			
15	01-3190-0126-00	COVER PLATE (FUEL TANK)	1	36,68
16	01-3150-1410-01	HOOD HANDLE	2	26,12
17	ROL500S-010505	BUCKLE ASSM	2	Cancelled
	ROL500S-010505.1B	BUCKLE ATTACHMENT	1	
	ROL500S-010505.1A	BUCKLE	1	
	ROL500S-010505.1C	BUCKLE BKT	1	
18	HSPG.W12-DIN-1	SPRING WASHER,TANG ENDS	4	0,16
19	FN.B-M12x25-8.8-DIN-1	BOLT	4	0,28
20	01-3190-1527-00	HOOD HANDLE BKT	2	8,52
21	HSPG.W6-DIN-1	SPRING WASHER,TANG ENDS	13	0,16
22	FN.B-M6x16-8.8-DIN-1	BOLT	13	0,16
23	FN.B-M5x12-8.8-DIN-1	BOLT	4	0,16
24	SPG.W5-DIN-1	SPRING WASHER	4	0,16
25	FN.B-M5x16-8.8-DIN-1	BOLT	4	0,16
26	01-3150-2551-01	LONG)	3	42,27
27	01-3190-3653-00		1	36,60
	01-3191-3654-00		1	
	01-3191-3655-00		2	
28	CPT400-18-A		1	15,64
29	V-400-030302		2	8,56
30	SPG.W10-DIN-1	SPRING WASHER	4	0,16
31	FN.B-M10x20-8.8-DIN-1	BOLT	2	0,24
32	01-3150-2552-01	HIGH RUBBER BEADING (1600MM LONG)	1	32,44
33	01-3190-3652-00	SHIM	2	Cancelled
34	FN.W12-DIN-1	WASHER	12	0,36
35	IN.N-M12-DIN-1	LOCK NUT	6	0,28
36	FN.W8-DIN-1	WASHER	7	0,36
37	IN.N-M8-DIN-1	LOCK NUT	2	0,16
38	FN.W6-DIN-1	WASHER	4	0,16
39	FN.W5-DIN-1	WASHER	8	0,16
40	IN.N-M5-DIN-1	LOCK NUT	4	0,08
41	FN.B-M10x30-8.8-DIN-1	BOLT	2	0,28
42	IN.N-M10-DIN-1	LOCK NUT	2	0,24
43	FN.W10-DIN-1	WASHER	2	0,16

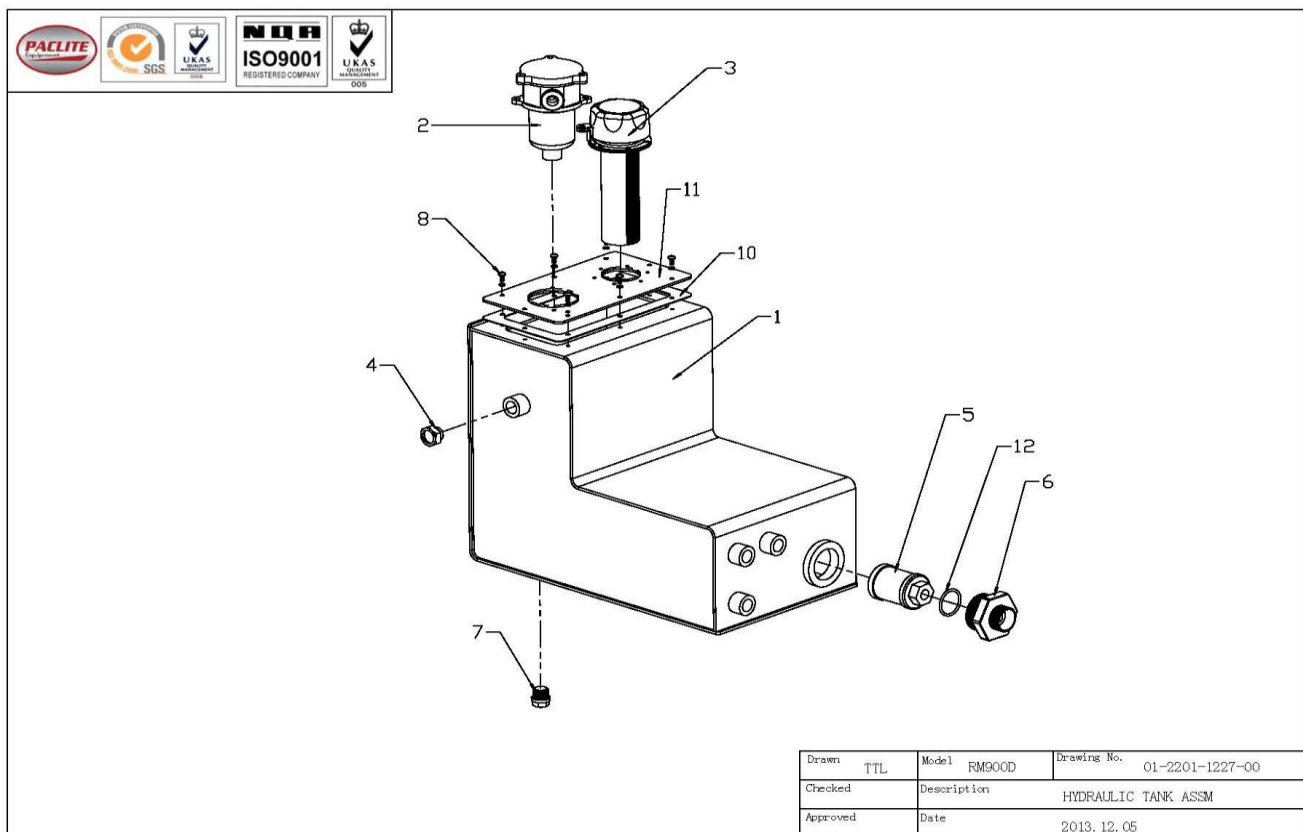
# 02) FRONT FRAME ASSEMBLY BOM (01-3191-1534-00)

NO.	PART NO.	PART DESCRIPTION	QTY.	UNIT PRICE (EUR) 2013
-----	----------	------------------	------	-----------------------



# 02-1) HYDRAULIC TANK ASSEMBLY BOM (01-2201-1227-00)

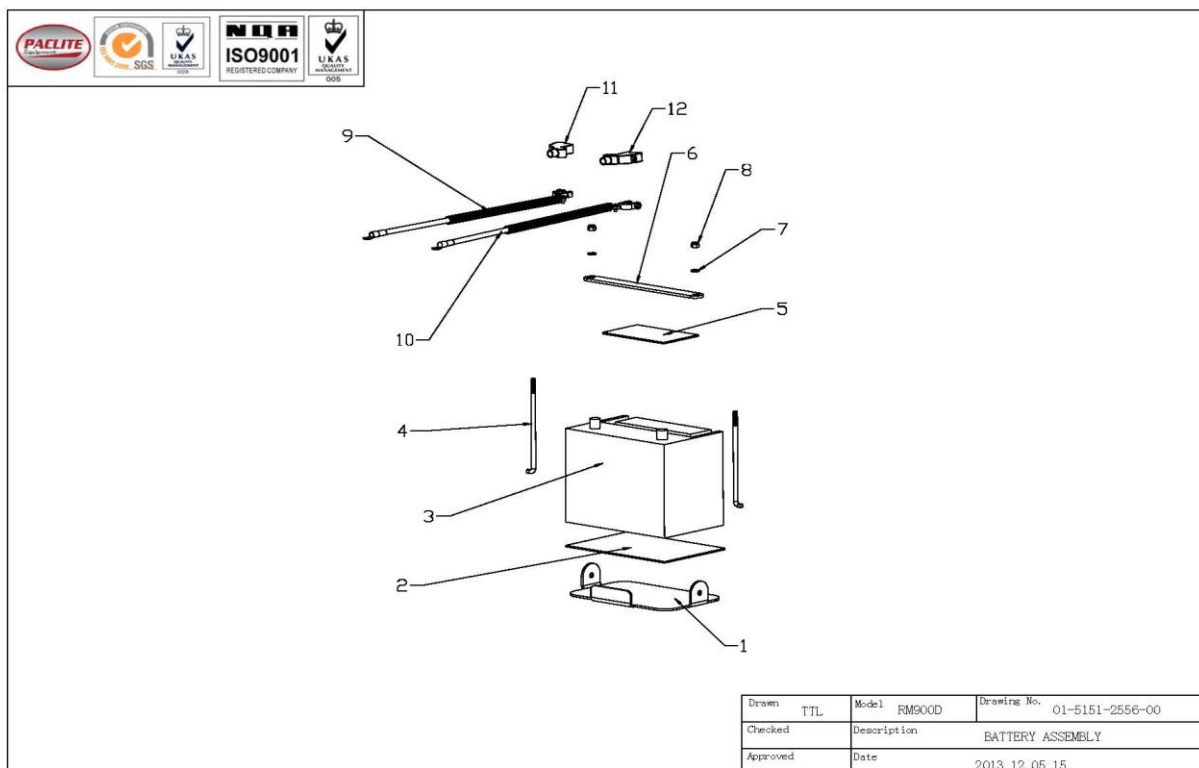
NO.	PART NO.	PART DESCRIPTION	QTY.	UNIT PRICE (EUR) 2013
1	01-2201-1416-00	HYDRAULIC TANK WELD	1	329,34
	01-2200-1228-00	HYDRAULIC TANK BASE	1	
	01-2200-1229-10	HYDRAULIC TANK TOP	1	
	01-2200-1230-00	HYDRAULIC TANK SIDE1	1	
	01-2200-1231-00	HYDRAULIC TANK SIDE2	1	
	01-2200-1232-00	HYDRAULIC TANK MID	1	
	01-2200-1234-00	CONNECTOR (SMALL PORT)	7	
	01-2200-1235-00	CONNECTOR (BIG PORT)	1	
2	01-2150-0068-01	RETURN FILTER	1	
3	01-2150-0098-01	AIR BREATHER FILTER	1	109,56
4	100GB-041000	OIL GAUGE	1	7,32
5	01-2150-0067-01	SUCTION FILTER	1	101,72
6	01-2200-1250-01	SUCTION CONNECTOR (TANK)	1	39,64
7	4BN-08WD	HEX HEAD PLUG	1	Cancelled
8	PAN.S-M5x10	PAN HEAD SCREW	6	0,20
9	HSPG.W5-DIN-1	SPRING WASHER	6	0,16
10	01-2200-3649-01	GASKET 2	1	Cancelled
11	01-2200-1233-00	HYDRAULIC TANK COVER	1	25,76
12	W01-34.4x3.1	O-RING	1	4,00





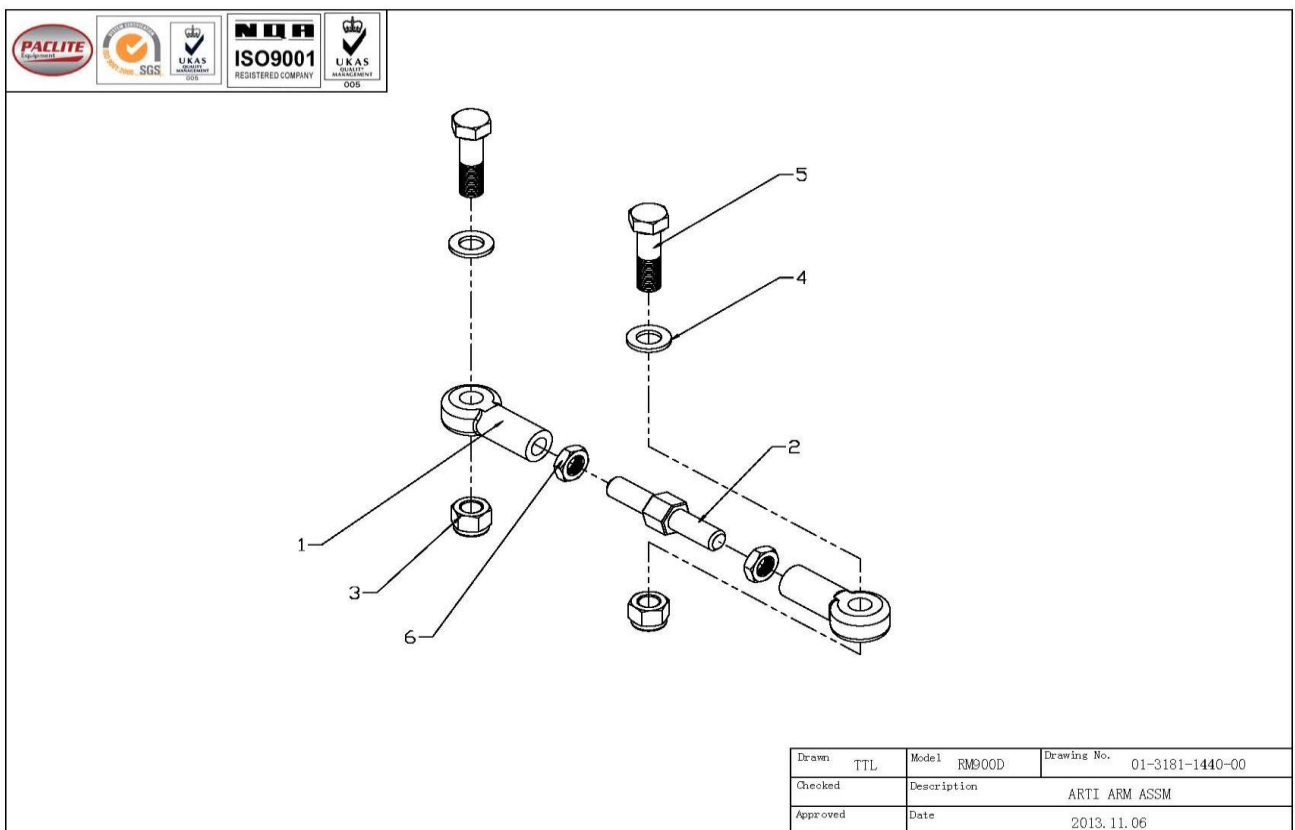
# 02-2) BATTERY ASSEMBLY BOM (01-5151-2556-00)

NO.	PART NO.	PART DESCRIPTION	QTY.	UNIT PRICE (EUR) 2013
1	01-3190-1242-00	BATTERY SUPPORT BKT	1	Price Include 01-3191-1531-00
2	530339	RUBBER PACKING	1	9,64
3	01-5150-0045-01	BATTERY	1	227,44
4	530341	BATTERY SUPPORT HOOD	2	6,56
5	530337	RUBBER PACKING	1	9,56
6	01-3190-1244-00	BATTERY SUPPORT CLAMP	1	18,24
7	FN.W8-DIN-1	WASHER	2	0,36
8	IN.N-M8-DIN-1	LOCK NUT	2	0,16
9	132243-B	ANODE WIRE	1	37,32
10	132242-B	CATHODE WIRE	1	26,08
11	530342	ANODE CAP	1	Price Include 132243-B
12	530343	CATHODE CAP	1	Price Include 132242-B



# 06B) ARTICULATION ARM ASSEMBLY (01-3181-1440-00)

NO.	PART NO.	PART DESCRIPTION	QTY.	UNIT PRICE (EUR) 2013
1	01-3180-1427-01	ARTI ARM BEARING	2	32,10
2	01-3180-0219-00	ARTI SUPPORTING ARM	1	19,12
3	IN.N-M16-DIN-1	LOCK NUT	2	0,36
4	FN.W16-DIN-1	WASHER	2	0,16
5	FN.B-M16x55-8.8HALF-DIN-1	BOLT	2	0,48
6	FNL.N-M16-DIN-1	HEXAGON THIN NUT	2	0,32

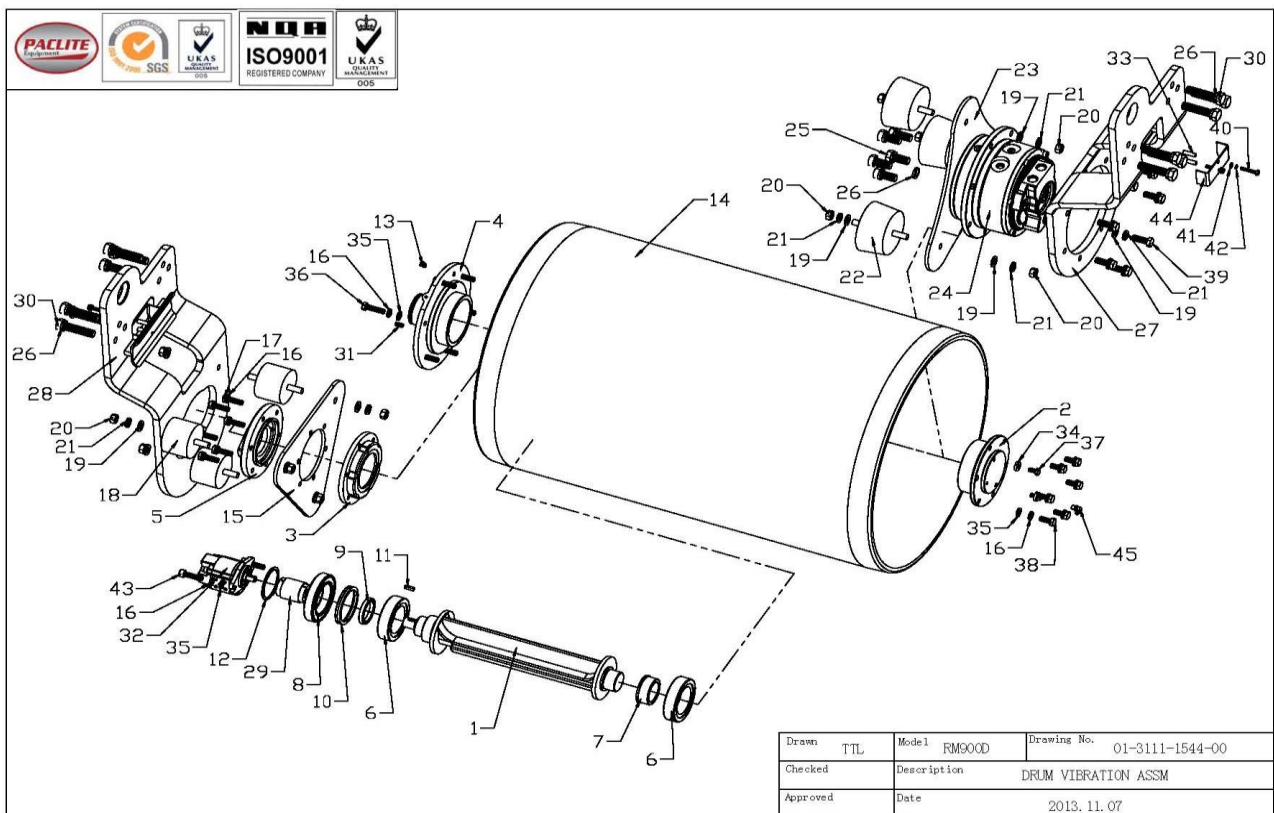


### 03) DRUM VIBRATION ASSEMBLY BOM (01-3111-1544-00)

NO.	PART NO.	PART DESCRIPTION	QTY. x 2	UNIT PRICE (EUR) 2013
1	01-3130-0022-02	VIBRATION ROD	1	128,40
2	01-3130-0019-01	VIB PLATE 1	1	142,32
3	01-3130-0020-01	VIB PLATE 2	1	70,17
4	01-3130-0021-01	VIB PLATE 3	1	101,26
5	01-3130-0024-01	VIB PLATE 4	1	74,76
6	01-3130-0093-01	ROLLER BEARING (OUTER RING)	2	208,66
7	01-3130-0093-01	ROLLER BEARING (INNER RING)	2	
8	01-3130-0094-01	BALL BEARING	1	109,56
9	01-2150-0160-01	VIBRATION SHAFT SEAL	1	4,68
10	01-3130-0167-01	V RING	1	13,88
11	01-3130-0163-10	KEY (VIB SHAFT)	1	9,52
12	CS.RG70	EXTERNAL CIRCLIP	1	2,00
13	01-3130-0161-01	45 deg GREASE NIPPLE	1	1,76
14	01-3111-0018-00	DRUM ASSM	1	1425,48
	01-3110-0001-00	DRUM	1	
	01-3110-0002-00	DRUM COVER (EXTR)	1	
	01-3110-0003-00	DRUM COVER (MTR)	1	
15	01-3110-0051-00	TRI PLATE (EXTR)	1	160,34
16	HSPG.W10-DIN-1	SPRING WASHER,TANG ENDS	20	0,16
17	FN.B-M10x35-8.8-DIN-1	BOLT	6	0,28
18	01-3130-1312-01-B	SHOCK MOUNT (EXTR)	3	34,44
19	FN.W12-DIN-1	WASHER	19	0,36
20	FN.N-M12-DIN-1	NUT	12	0,24
21	HSPG.W12-DIN-1	SPRING WASHER,TANG ENDS	19	0,16
22	01-3130-1311-01	SHOCK MOUNT (MTR)	3	38,64
23	01-3110-0050-00	TRI PLATE (MTR)	1	114,39
24	01-2000-0056-01	DRIVE MOTOR	1	2259,09
25	FN.B-M16x35-8.8-DIN-1	BOLT	5	0,92
26	HSPG.W16-DIN-1	SPRING WASHER,TANG ENDS	17	0,28
27	01-3111-0031-00	DRUM SUPPORT WELD (MTR)	1	162,62
	01-3110-0031-10	DRUM SUPPORT (EXTR)	1	
	01-3190-0181-00	HOSE PROTECTION PLATE	1	
	01-3190-0182-00	HOSE PROTECTION SUPPORT	2	
28	01-3111-0030-00	DRUM SUPPORT WELD (EXTR)	1	164,40
	01-3110-0030-20	DRUM SUPPORT (EXTR)	1	
	01-3190-0181-00	HOSE PROTECTION PLATE	1	
	01-3190-0182-00	HOSE PROTECTION SUPPORT	2	
29	01-3131-0049-01	VIB COUPLING SET	1	70,50
30	FN.B-M16x70-8.8-DIN-1	BOLT	12	1,08
31	FHSS.S-M8x16-GB-3	GRUB SCREW	2	0,12
32	01-2130-0061-11	VIB MOTOR	1	1087,70
33	01-3190-1260-00	SUPPORTING HOSE	4	8,00
34	SPG.W8-DIN-1	SPRING WASHER	2	0,36
35	FN.W10-DIN-1	WASHER	14	0,16

# 03) DRUM VIBRATION ASSEMBLY BOM (01-3111-1544-00)

NO.	PART NO.	PART DESCRIPTION	QTY. x 2	UNIT PRICE (EUR) 2013
36	FN.B-M10x40-8.8-DIN-1	BOLT	6	0,28
37	FN.B-M8x16-8.8-DIN-1	BOLT	2	0,20
38	FN.B-M10x25-8.8-DIN-1	BOLT	6	0,24
39	FN.B-M12x35-8.8-DIN-1	BOLT	7	0,44
40	FN.B-M6x45-8.8-DIN-1	BOLT	4	0,24
41	FN.W6-DIN-1	WASHER	4	0,16
42	SPG.W6-DIN-1	SPRING WASHER	4	0,16
43	HS.B-M10x40-8.8-GB-1	SCREW	2	0,36
44	01-3190-0183-00	HOSE PROTECTION BKT	2	3,88
45	01-3130-0162-01	90 deg GREASE NIPPLE	1	1,76



## 04) OUTER SCRAPER ASSEMBLY BOM

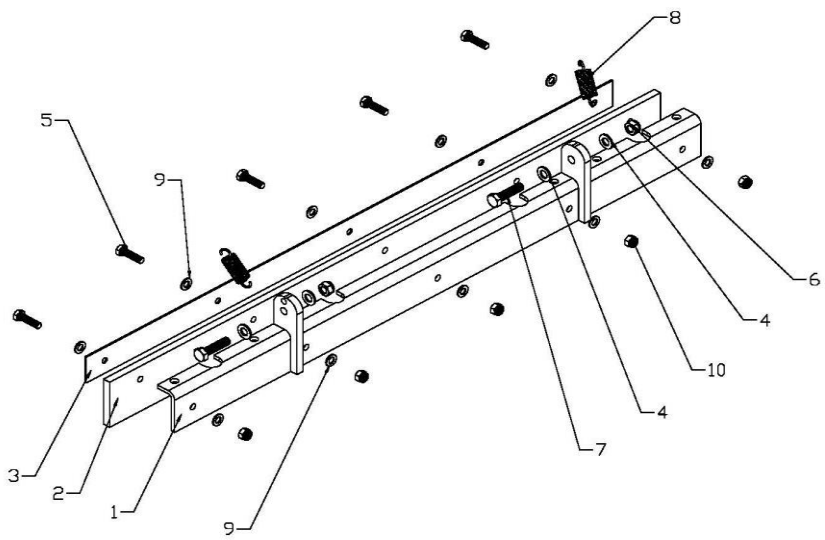
(01-3121-0016-00)

NO.	PART NO.	PART DESCRIPTION	QTY.	UNIT PRICE (EUR) 2013
1	01-3121-0034-00	OUTER SCRAPER FRAME	1	55,23
	01-3120-0004-10	SCRAPER FRAME	1	
	01-3120-0032-00	SCRAPER FRAME BKT 1	1	
	01-3120-0033-00	SCRAPER FRAME BKT 2	1	
2	01-3120-0005-01-B	SCRAPER RUBBER	1	74,34
3	01-3120-0006-00	SCRAPER RUBBER BKT	1	25,12
4	FN.W10-DIN-1	WASHER	4	0,16
5	FN.B-M8x30-8.8-DIN-1	BOLT	5	0,24
6	IN.N-M10-DIN-1	LOCK NUT	2	0,24
7	FN.B-M10x40-8.8-DIN-1	BOLT	2	0,28
8	01-3120-0014-01	SPRING	2	8,36
9	FN.W8-DIN-1	WASHER	10	0,36
10	IN.N-M8-DIN-1	LOCK NUT	5	0,16

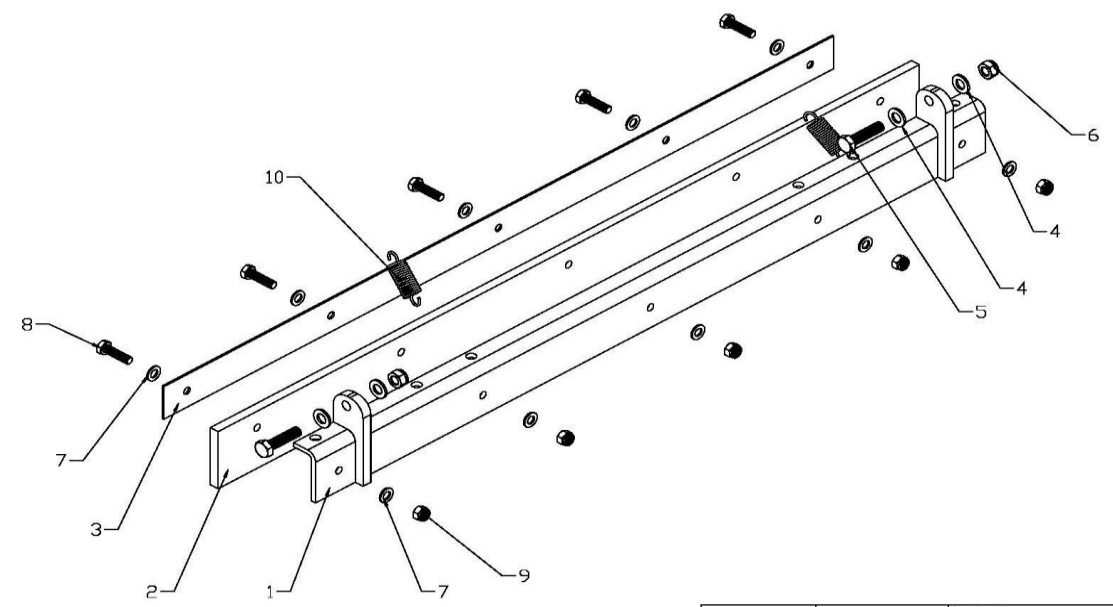
## 05) INNER SCRAPER ASSEMBLY BOM

(01-3121-0017-00)

NO.	PART NO.	PART DESCRIPTION	QTY.	UNIT PRICE (EUR) 2013
1	01-3121-0013-00	INNER SCRAPER FRAME	1	55,23
	01-3120-0004-00	SCRAPER FRAME	1	
	01-3120-0035-00	SCRAPER FRAME BKT 3	2	
2	01-3120-0005-01-B	SCRAPER RUBBER	1	74,34
3	01-3120-0006-00	SCRAPER RUBBER BKT	1	25,12
4	FN.W10-DIN-1	WASHER	4	0,16
5	FN.B-M10x40-8.8-DIN-1	BOLT	2	0,28
6	IN.N-M10-DIN-1	LOCK NUT	2	0,24
7	FN.W8-DIN-1	WASHER	10	0,36
8	FN.B-M8x30-8.8-DIN-1	BOLT	5	0,24
9	IN.N-M8-DIN-1	LOCK NUT	5	0,16
10	01-3120-0014-01	SPRING	2	8,36



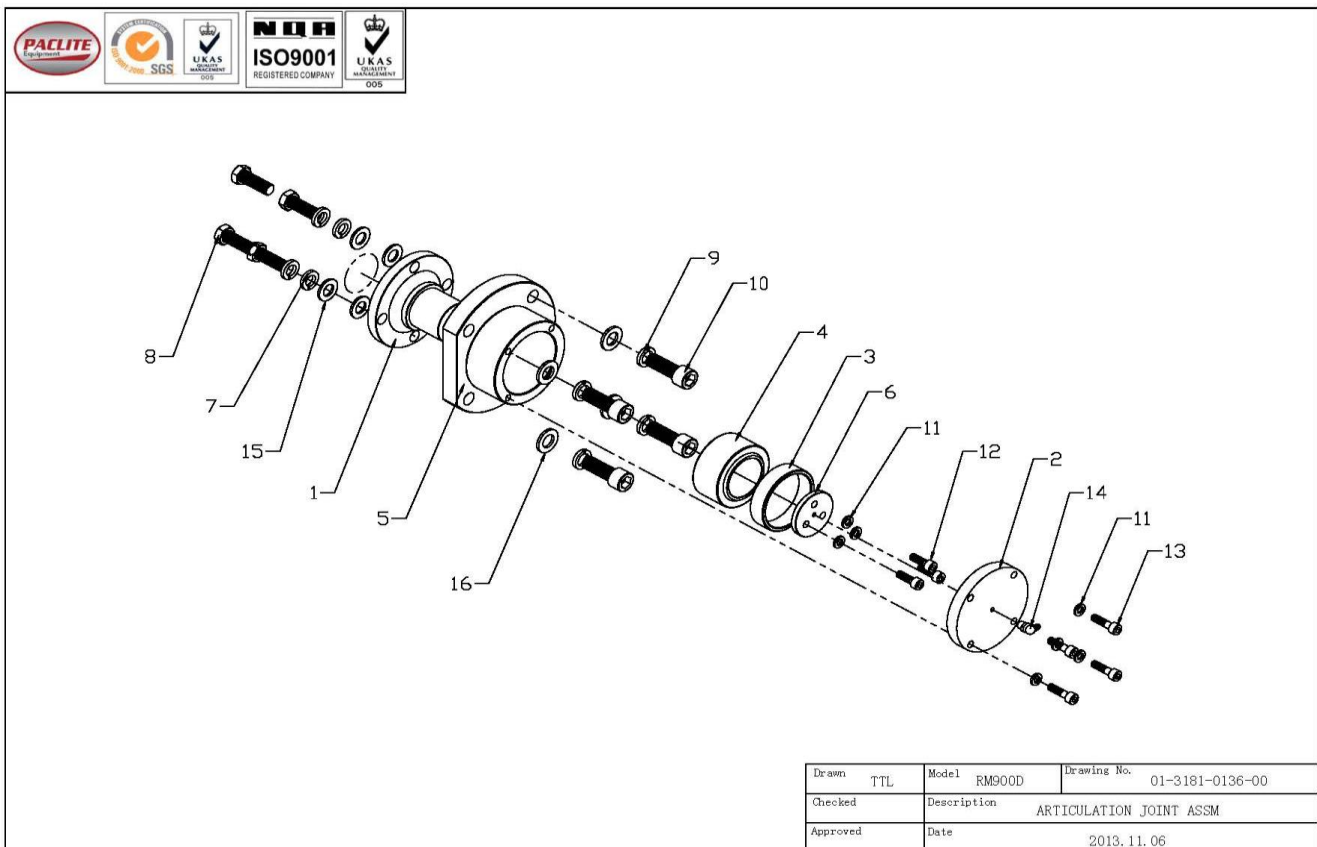
Drawn	TTL	Model	RM900D	Drawing No.	01-3121-0016-00
Checked		Description	SCRAPPER ASSM OUTER		
Approved		Date	2013.11.06		



Drawn	TTL	Model	RM900D	Drawing No.	01-3121-0017-00
Checked		Description	SCRAPPER ASSM INNER		
Approved		Date	2013.11.06		

# 06A) ARTICULATION JOINT ASSEMBLY BOM (01-3181-0136-00)

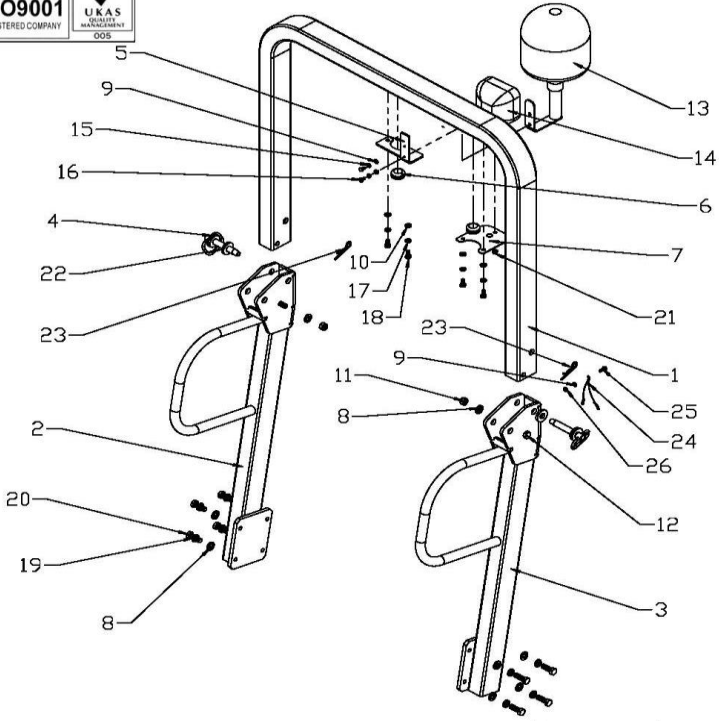
NO.	PART NO.	PART DESCRIPTION	QTY.	UNIT PRICE (EUR) 2013
1	01-3180-0074-00	ARTI JOINT INTERNAL SHAFT	1	115,56
2	01-3180-0069-00	MAIN COVER (ARTI)	1	31,40
3	01-3180-0070-00	SUPPORTING RING (ARTI)	1	15,28
4	01-3180-0092-01	SPHERICAL BEARING	1	224,32
5	01-3180-0186-00	ARTICULATION HOUSING	1	141,18
6	01-3180-0072-00	TOP COVER (ARTI)	1	11,36
7	HSPG.W14-DIN-1	SPRING WASHER,TANG ENDS	4	0,08
8	HS.B-M14x35-12.9-GB-3	SCREW	4	0,48
9	HSPG.W16-DIN-1	SPRING WASHER,TANG ENDS	4	0,28
10	HS.B-M16x40-12.9-GB-3	SCREW	4	0,48
11	HSPG.W8-DIN-1	SPRING WASHER,TANG ENDS	7	0,36
12	HS.B-M8x25-12.9-GB-3	SCREW	3	0,28
13	HS.B-M8x30-12.9-GB-3	SCREW	4	0,36
14	01-3130-0162-01	90 DEG GREASE FITTING	1	1,76
15	FN.W14-DIN-1	WASHER	4	0,16
16	FN.W16-DIN-1	WASHER	4	0,16



07) ROPS ASSEMBLY BOM  
(01-3141-1526-00)

NO.	PART NO.	PART DESCRIPTION	QTY.	UNIT PRICE (EUR) 2013
1	01-3140-0037-00	ROPS BEND	1	151,66
2	01-3141-0044-00	ROPS STRAIGHT (R) ASSM	1	129,88
	01-3141-0036-00	ROPS STRAIGHT	1	
	01-3140-0091-00	ROPS COLUMN	1	
	01-3140-0142-00	ROPS THIN BLK	1	
	01-3141-1413-00L	ROPS JOINT ASSM (L)	1	
	01-3140-0040-00L	ROPS JOINT (L)	1	
	01-3140-0041-00	ROPS JOINT PLATE	1	
	01-3140-0042-10	ROPS JOINT BKT	1	
	01-3140-0039-00	HAND GRIP (SIDE)	1	
3	01-3141-0043-00	ROPS STRAIGHT (L) ASSM	1	
	01-3141-0036-00	ROPS STRAIGHT	1	
	01-3140-0091-00	ROPS COLUMN	1	
	01-3140-0142-00	ROPS THIN BLK	1	
	01-3141-1413-00R	ROPS JOINT ASSM (R)	1	
	01-3140-0040-00R	ROPS JOINT ( R )	1	
	01-3140-0041-00	ROPS JOINT PLATE	1	
	01-3140-0042-10	ROPS JOINT BKT	1	
	01-3140-0039-00	HAND GRIP (SIDE)	1	
4	01-3141-1411-00	ROPS PIN SET	2	42,09
	01-3140-0111-00	ROPS PIN	1	
	01-3140-0112-00	ROPS RING	1	
	01-3140-0113-00	ROPS PULL RING	1	
5	01-3150-1253-00	BEACON LIGHT BKT	1	12,68
6	01-3140-1414-00	WIRE PROTECTION RING	2	3
7	01-3150-1252-00	BACK LIGHT BKT	1	7
8	FN.W12-DIN-1	WASHER	10	0,36
9	FN.W6-DIN-1	WASHER	2	0,16
10	FN.W8-DIN-1	WASHER	4	0,36
11	IN.N-M12-DIN-1	LOCK NUT	2	0,28
12	FN.B-M12x90-8.8-DIN-1	BOLT	2	0,92
13	01-5150-1417-01	BEACON LIGHT ASSEMBLY	1	207,16
	01-5150-1417-01	BEACON LIGHT		
	01-3190-2621-01	BEACON LIGHT BKT		
14	01-5150-1418-01	BACK LIGHT	1	81
15	HSPG.W6-DIN-1	SPRING WASHER,TANG ENDS	2	0,16
16	FN.B-M6x10-8.8-DIN-1	BOLT	2	0,16
17	HSPG.W8-DIN-1	SPRING WASHER,TANG ENDS	4	0,36
18	FN.B-M8x16-8.8-DIN-1	BOLT	4	0,2
19	HSPG.W12-DIN-1	SPRING WASHER,TANG ENDS	8	0,16
20	FN.B-M12x35-8.8-DIN-1	BOLT	8	0,44
21	HF.N-M6-DIN-1	HEXAGON FLANGE NUT	1	0,2
22	01-3140-1412-00	ROPS PIN DUMPER	2	3,76
23	01-3140-0155-01	COTTER PIN	2	3,52
24	01-3191-3625-00	HOLDING STRING & CONNECTOR	1	Cancelled
25	FN.B-M6x25-8.8-DIN-1	BOLT	2	0,16
26	FN.N-M6-DIN-1	NUT	2	0,16

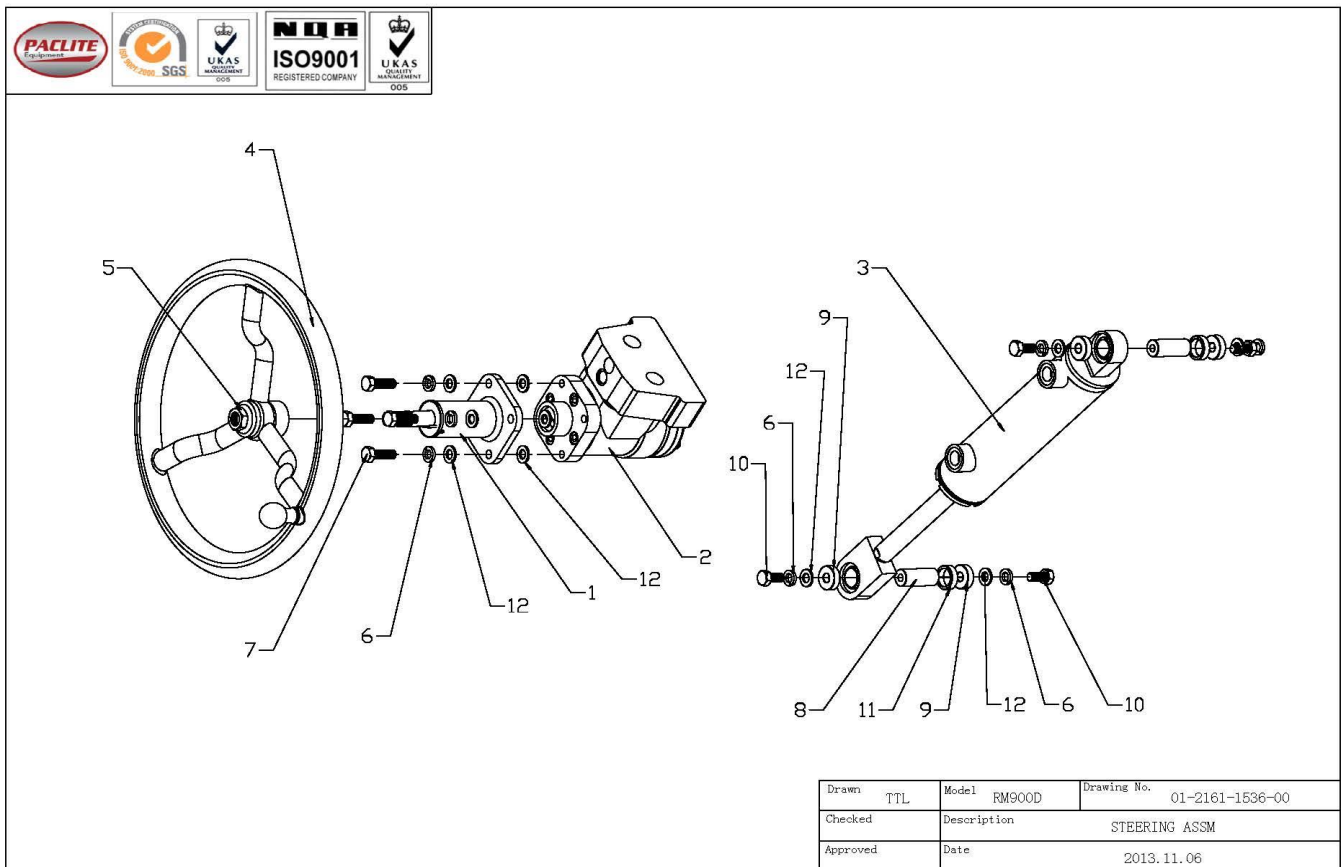




Drawn	TTL	Model	RM900D	Drawing No.	01-3141-1526-00
Checked		Description	ROPS ASSM		
Approved		Date	2013. 11. 06		

# 08) STEERING ASSEMBLY BOM (01-2161-1536-00) SCREW

NO.	PART NO.	PART DESCRIPTION	QTY.	UNIT PRICE (EUR) 2013
1	01-2160-0059-11	STEERING COLUMN ASSM	1	99,18
2	01-2160-0058-11	MAIN STEERING	1	290,46
3	01-2160-0060-11	STEERING CYLINDER	1	335,54
4	01-2160-1430-01	STEERING WHEEL	1	86,40
5	FN.L.N-M16-DIN-1	HEXAGON THIN NUT	1	0,32
6	HSPG.W10-DIN-1	SPRING WASHER,TANG ENDS	8	0,16
7	FN.B-M10x30-8.8-DIN-1	BOLT	4	0,16
8	01-2160-3632-00	CYLINDER PIN (SPHERICAL BEARING)	2	3,92
9	01-2160-3633-00	CYLINDER WASHER (SPHERICAL BEARING)	4	6,88
10	FN.B-M10x20-8.8-DIN-1	BOLT	4	0,24
11	CPT90P-031700	SPACER	2	2,64
12	FN.W10-DIN-1	WASHER	12	0,16



## 09) ENGINE COMPARTMENT ASSEMBLY BOM (01-1151-1530-00)

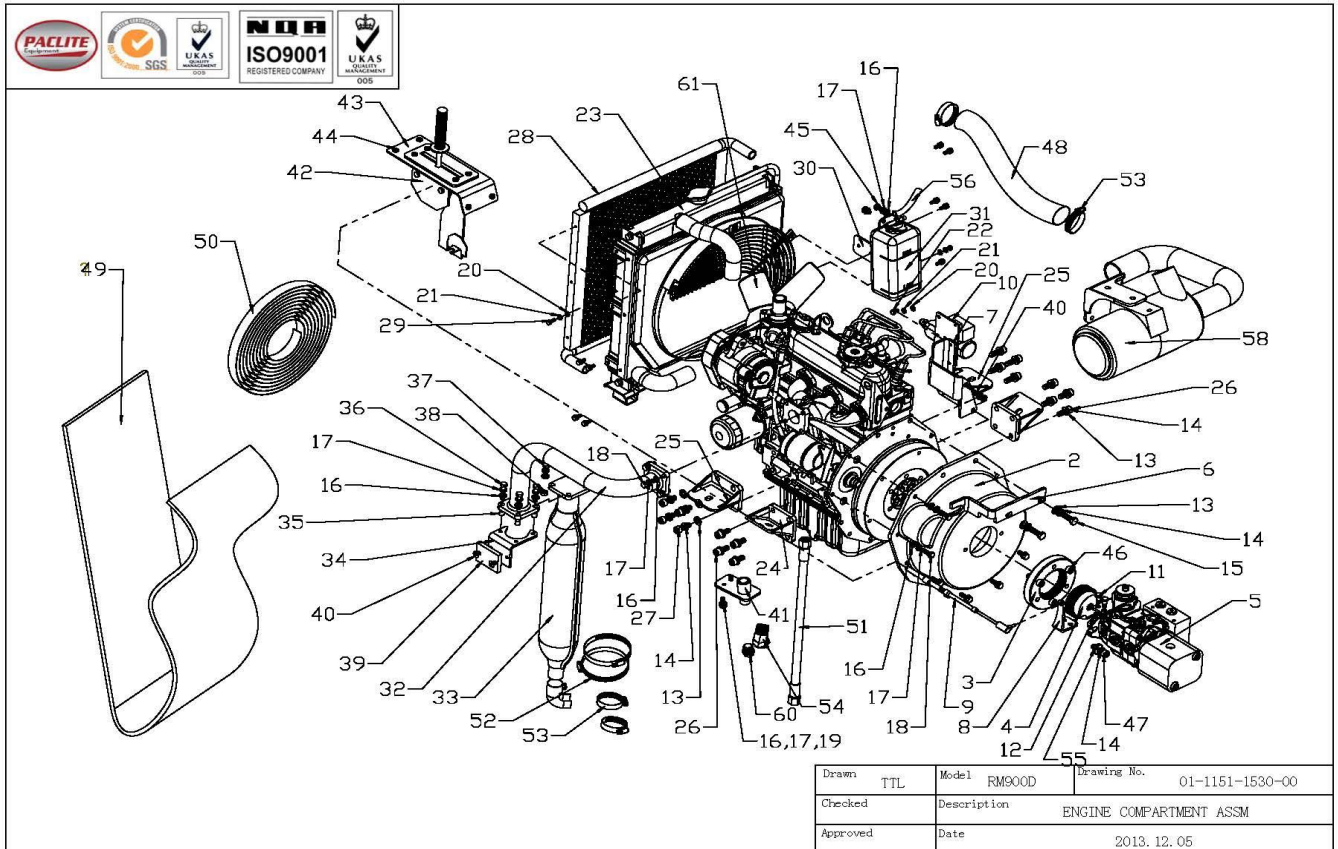
NO.	PART NO.	PART DESCRIPTION	QTY.	UNIT PRICE (EUR) 2013
1	01-1000-3050-01	ENGINE D1105 (KUBOTA)	1	
2	01-1150-0159-01	FLYWHEEL HOUSING	1	227,28
3	01-1150-0157-01	FLYWHEEL FLANG	1	103,17
4	01-2150-0158-01	FLYWHEEL COUPLING	1	126,57
5	01-2000-0057-01	MAIN AXIAL PUMP	1	1345,32
6	01-1150-1251-00	CONTROL CABLE BKT	1	15,76
7	01-1150-3629-00	FUEL SOLENOID ATT BKT	1	16,92
8	01-2150-1254-00	PUMP DIRECTIONAL ARM	1	8,76
9	01-3151-1521-01	CONTROL CABLE ASSM	1	159,1
	01-3150-0047-11	CONTROL CABLE	1	
	01-3150-0048-01	STRAINLESS STEEL BALL JOINT	1	
10	01-1151-3636-00	FUEL SOLENOID ASSM	1	
	01-1150-3628-00	FUEL SOLENOID SUPPORT BKT	1	
	01-1150-0086-01	FUEL SOLENOID	1	188,84
	PAN.S-M5X10	PAN HEAD SCREW	2	0,2
	PAN.S-M5X16	PAN HEAD SCREW	2	0,32
	FN.W5-DIN-1	WASHER	4	0,16
	SPG.W5-DIN-1	SPRING WASHER	4	0,16
11	01-2150-1257-00	BOLT (DIRECTIONAL ARM)	2	6,56
12	IN.N-M8-DIN-1	LOCK NUT	2	0,16
13	FN.W10-DIN-1	WASHER	18	0,16
14	HSPG.W10-DIN-1	SPRING WASHER,TANG ENDS	18	0,16
15	FN.B-M10x1.25x35-8.8-DIN	BOLT	2	4,8
16	FN.W8-DIN-1	WASHER	21	0,36
17	HSPG.W8-DIN-1	SPRING WASHER,TANG ENDS	21	0,36
18	FN.B-M8x25-8.8-DIN-1	BOLT	10	0,2
19	FN.B-M8x20-8.8-DIN-1	BOLT	3	0,2
20	FN.W6-DIN-1	WASHER	14	0,16
21	HSPG.W6-DIN-1	SPRING WASHER,TANG ENDS	14	0,16
22	FN.B-M6x12-8.8-DIN-1	BOLT	2	0,24
23	01-1151-0055-01	RADIATOR	1	769,5
24	01-1151-1189-00	ENGINE ATTACHEMENT BKT 2	2	34,56
	01-1150-1224-00	ENGINE BKT2 (TRI)	2	
	01-1150-1225-00	ENGINE BKT2 (SQ1)	1	
	01-1150-1226-00	ENGINE BKT2 (SQ2)	1	
25	01-1151-0197-00	ENGINE ATTACHEMENT BKT L	2	34,12
	01-1150-1420-10	ENGINE BKT1 (SQ1)	2	
	01-1150-1421-00	ENGINE BKT1 (SQ2)	2	
	01-1150-1422-00	ENGINE BKT1 (TRI)	4	
26	HS.B-M10x1.25x30-8.8-GB	SCREW	8	4,8
27	HS.B-M10x1.25x35-8.8-GB	SCREW	8	4,8
28	01-2150-0187-01	HYDRAULIC OIL COOLER	1	354,76
29	FN.B-M6x16-8.8-DIN-1	BOLT	12	0,16
30	01-1150-1256-00	WATER TANK BKT	1	9,8

## 09) ENGINE COMPARTMENT ASSEMBLY BOM (01-1151-1530-00)

NO.	PART NO.	PART DESCRIPTION	QTY.	UNIT PRICE (EUR) 2013
31	01-1151-0054-01	OVER FLOW TANK	1	130,64
32	01-1151-0141-00	MUFFLER PIPE EXT ASSM	1	57,96
	01-1150-0125-00	MUFFLER PIPEBKT	2	
	01-1150-0140-10	MUFFLER EXT PIPE	1	
33	01-1151-0052-01	MUFFLER	1	291,12
34	01-1190-1239-00	MUFFLER HOLDING BKT	1	14,88
35	01-1150-1522-00	COLLAR (MUFFLER PIPE)	3	8,92
36	1	BOLT	3	0,24
37	FN.B-M8x30-8.8-DIN-1	BOLT	1	0,24
38	FN.N-M8-DIN-1	NUT	1	0,16
39	01-1150-1240-01	MUFFLER DAMPER	1	3,64
40	HSF.S-M8x25-8.8-DIN-1	SOCKET COUNTERSUNK HEAD SCREW	2	0,2
41	01-1191-2558-00	ENGINE OIL DRAIN BLK WELDING	1	Cancelled
	01-1190-1249-00	ENGINE OIL DRAIN BKT	1	
	01-1190-1525-00	CONNECTOR (ENGINE DRAIN PIPE)	1	
42	01-5150-0046-11	CONTROL LEVER SET	1	309,46
43	01-3200-0164-00	CONTROL UNIT ATTACHEMENT BKT	1	16,92
44	PAN.S-M6X10	PAN HEAD SCREW	8	0,24
45	FN.B-M8x12-8.8-DIN-1	BOLT	2	0,16
46	HS.B-M10x1.25X35-8.8-DIN	SCREW	3	4,8
47	FN.B-3/8-16UNC-1-3/8	BOLT	2	4,8
48	01-3190-2590-01	AIR INLET PIPE	1	35,08
49	01-1150-1423-01		1	36
50	01-1150-1422-01		1	33,63
51	20411-22-06x1T06x450	HYDRAULIC HOSE	1	Cancelled
52	HOOP.D90-140	HOOP	2	7,2
53	HOOP.D40-65	HOOP	4	2,36
54	1CH9-22-22OG	ENGINE DRAIN CONNECTOR	1	Cancelled
55	01-1150-2585-00	WASHER (PUMP ATT)	2	1,92
56	01-1150-2588-01	DRAIN PIPE	1	20,88
57	01-1150-3630-00	AIR FILTER BKT	1	26,36
58	01-1151-0051-01	AIR FILTER	1	425,25
59	KM170F-F0009		1	2,36
60	01-1150-1302-01		1	50,52

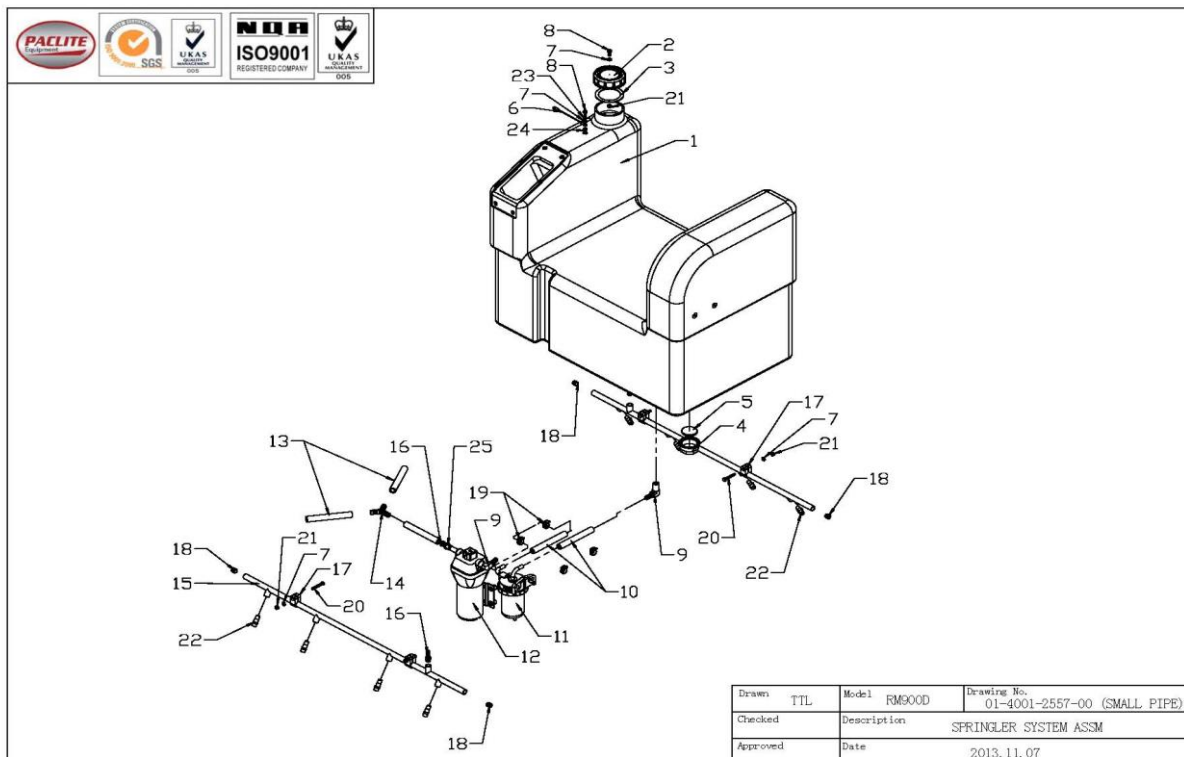
# 09) ENGINE COMPARTMENT ASSEMBLY BOM (01-1151-1530-00)

NO.	PART NO.	PART DESCRIPTION	QTY.	UNIT PRICE (EUR) 2013
-----	----------	------------------	------	-----------------------



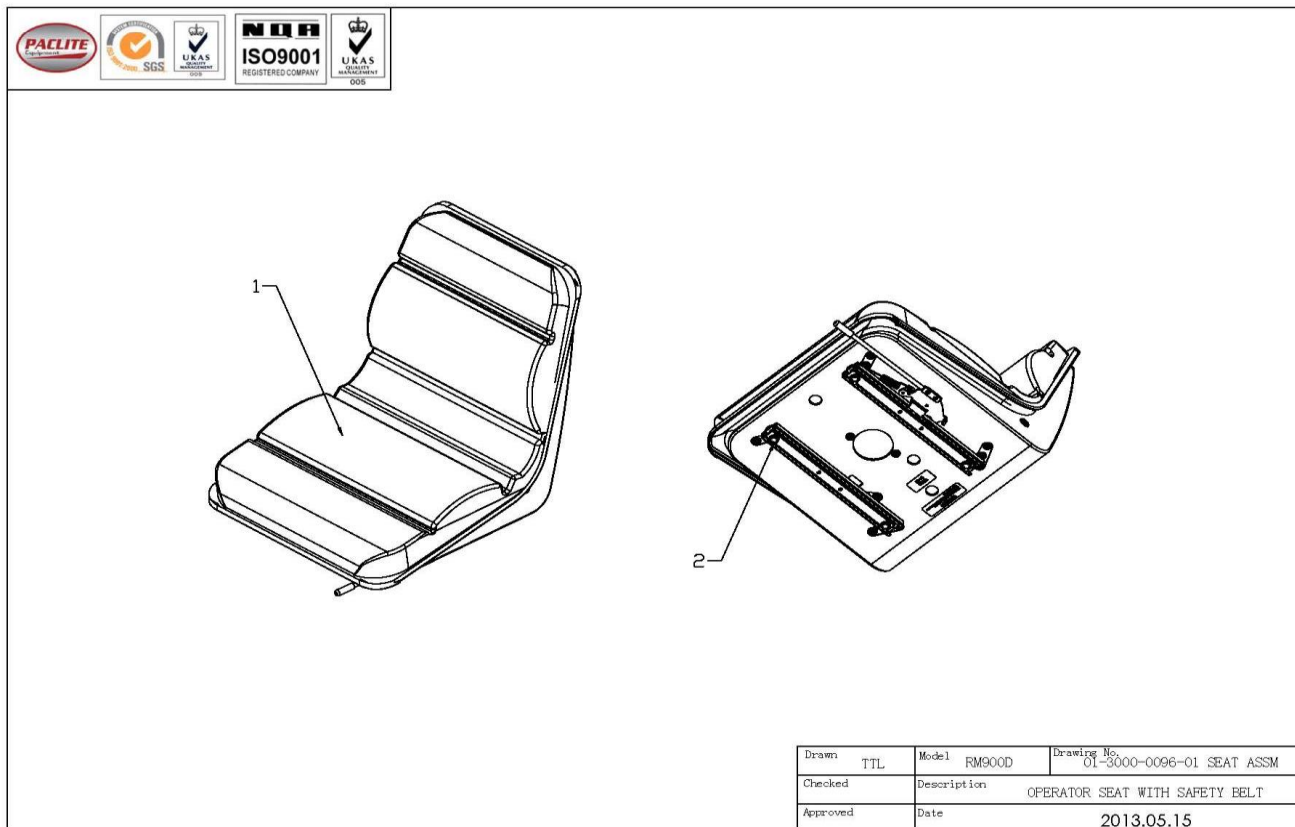
# 10) SPRINGLER SYSTEM ASSEMBLY (01-4001-2557-00) SMALL PIPE

NO.	PART NO.	PART DESCRIPTION	QTY.	UNIT PRICE (EUR) 2013
1	01-3201-2562-31	WATER TANK	1	169,54
2	ROL6.5-070108	WATER TANK CAP	1	2,08
3	ROL6.5-070109	SEAL,WATER TANK COVER	1	3,12
4	CPT90BII-000002	WATER TANK CAP	1	3,12
5	01-4000-3638-01-A	RUBBER SEAL	1	2,20
6	01-3191-3628-00	LOCK PIN STRING	1	1,08
7	FN.W6-DIN-1	WASHER	6	0,16
8	PAN.S-M6X16	PAN HEAD SCREW	2	0,16
9	HCC20A-030414	WATER TANK TIR-IN	2	4,80
10	HCC16-050304	HOSE	2	12,52
11	01-4150-0190-01	WATER FILTER	1	131,96
12	01-4000-0080-01	DIAPHRAM PUMP	1	119,96
13	HRT168-048246	HOSE	3	4,36
14	HRT168-048652	CONNECTOR	1	4,68
15	01-4001-2611-10	900MM TUBE (4 HEAD) WELD	2	42,09
16	HRT168-047935	HOSE NIPPLE	3	16,24
17	CPT90P-010901	HOOP	4	2,12
18	4MN-14WD	HEXAGONAL SOCKET HEAD PLUG	4	2,00
19	CPT90P-070006	Hose Clamp ( Dia 8-20)	4	0,44
20	FN.B-M6x40-8.8-DIN-1	BOLT	4	0,16
21	IN.N-M6-DIN-1	LOCK NUT	5	0,16
22	01-4000-2608-01		8	9,92
23	SPG.W6-DIN-1	SPRING WASHER	1	0,16
24	FN.N-M6-DIN-1	NUT	1	0,16
25	HRT168-047934	CONNECTOR	1	8,64



# 11) OPERATOR SEAT (驾驶员座椅) (01-3000-0096-01)

NO.	PART NO.	PART DESCRIPTION	QTY.	UNIT PRICE (EUR) 2013
1	01-3000-0096-01	OPERATOR SEAT WITH SAFETY BELT	1	270,34
2	FN.B-M10x12-8.8-DIN-1	BOLT	4	0,16



## 12) HYDRAULIC LINE ASSEMBLY BOM (液压管路装配)

(01-2211-2563-01)

(01-2211-1455-01) HYDRAULIC HOSE SET &  
(01-2211-1481-01) HYDRAULIC CONNECTOR SET

Line No.	Start Point	Joint (OR) Connection	End Point	Length (mm)	Hose Size	QTY	
1	M5	FC1	O2				
	1CG9-16-06OG	CC-16	1CB-16-04WD				
	20411	20441		750	1T05	1	
2	G1		M1				
	1CG9-22-08OG		1CG9-22-06OG				
	20411		20411	280	2T06	1	
3	P1		D6				
	1CG9-22-08OG		ICM-22WD				
	20441		20411	770	2T06	1	
4	D1		D5				
	ICM-22WD		ICM-22WD				
	20411		20411	2600	2T06	1	
5	D2		P2				
	ICM-22WD		1CG9-22-08OG				
	20411		20441	2450	2T06	1	
6	S1	FC1	O2				
	1CM-16-20WD						
	20411	20411		1200	1T05	1	
7	M2	FC2	S2				
	1CB-16-06WD	CC-16	1CM-16-20WD				
		20441	20411	1550	2T05	1	
8	C2		S4				
	1CG9-16-06OG		1CM-16-20WD				
	20411		20411	1000	2T05	1	
9	C1		S3				
	1CG9-16-06OG		1CM-16-20WD				
	20411		20411	900	2T05	1	
10	V3	FC3	M3				
	1CG9-16-06OG	CC-16 + 2C9-16	1CG9-16-06OG				
	20411	20411		1100	2T05	1	
11	V1	FC2	M2				
	1CG9-16-06OG						
	20411	20411		1150	2T05	1	
12	V6	FC3	M3				
	1CG9-16-06OG						
	20411	20411		2550	2T05	1	
13	V5	BC	T1				
	1CB-16-02WD	AC-16	1CG9-16-08OG				
	20411	20411		700	1T05	1	
14	V4		M4				
	1CG9-16-06OG		1CG9-16-06OG + 2C9-16				
	20411		20411	2500	2T05	1	
15	D3	BC	T1				



## 12) HYDRAULIC LINE ASSEMBLY BOM (液压管路装配)

(01-2211-2563-01)

(01-2211-1455-01) HYDRAULIC HOSE SET &amp;

(01-2211-1481-01) HYDRAULIC CONNECTOR SET

Line No.	Start Point	Joint (OR) Connection	End Point	Length (mm)	Hose Size	QTY	
1	M5	FC1	O2				
	ICM-16WD						
	20411	20411		750	1T05	1	
16	D4	FC4	B1				
	1CM-14WD	CC-14 + 2C9-14	1CG9-14-04OG				
	20411-14-05	20411-14-05		2750	2T05	1	
17	V2	FC5	T2				
	1CB-16-02WD	AC-16	1CG9-16-08OG				
	20411	20411		950	1T05	1	
18	D7	FC5	T2				
	1CM-16WD						
	20411	20411		500	1T05	1	
19	D8	FC4	B1				
	1CM-14WD						
	20411-14-05	20411-14-05		1000	2T05	1	
20		BC	T1				
		20411	20491	1000	1T05	1	
21		FC5	T2				
		20411	20411	600	1T05	1	
22	P3		T3				
	1CB-16-06WD		1CG9-16-08OG				
	20441		20411	850	1T05	1	
23	P4	FC6	T6				
	1CB-26-08WD	CC-36					
	20441-26-12W	20411-36--12T		850	1T12	1	
24	G2	FC6	T6				
	1CB-36-08WD + 2C9-36						
	20411-36-16	20491-36-16		850	1T16	1	
25	O1		T7				
	1CB-16-04WD		1CB-16-08WD				
	20411		20491	650	1T05	1	
26	ENGINE DRAIN		FRAME				
	1CH9-22-22OG						
	20411		20411	450	1T06	1	

## ADDITIONAL CONNECTOR NEEDED FOR THIS BATCH

4BN-08WD	3 EA
4BN-06WD	1 EA
4MN-14WD	4 EA

LEGEND

## 12) HYDRAULIC LINE ASSEMBLY BOM (液压管路装配)

(01-2211-2563-01)

(01-2211-1455-01) HYDRAULIC HOSE SET &amp;

(01-2211-1481-01) HYDRAULIC CONNECTOR SET

Line No.	Start Point	Joint (OR) Connection	End Point	Length (mm)	Hose Size	QTY	
1	M5	FC1	O2				

M MANIFOLD BLOCK

T TANK (HYDRAULIC)

G GEAR PUMP

O OIL COOLER

B BRAKE

C CYLINDER

V VIBRATION MOTOR

S STEERING



D DRIVE MOTOR

FC FRONT SIDE CONNECTOR

P AXIAL PUMP

BC BACK SIDE CONNECTOR

(01-5000-1247-01) DVR16 ELECTRICAL WIRING HARNESS DETAILS

SI NO	COLOUR	LENGTH (MM)	WIRE GAUGE	WIRR HARNESS TERMINALS				CONNECTOR DETAILS					
				FROM	TERMINAL	TO	TERMINAL	SPECIFICATION-START	END	TYPE			
1	BLUE	2700	1,5	BL		4P1TL		BEACON LIGHT(BL)		<b>4P1</b> 			
2	BROWN	2700	1,5	BL-		4P1BL							
3	BLUE	2000	1,5	HLR		4P1TR		HEAD LIGHT(REAR)					
4	BROWN	2000	1,5	HLR-		4P1BR							
5	BROWN	1800	1,5	4P1BR		G-	FREE : REMOVE WIRE SHEATH BY 8M	All the lead wires coming from rear side and front side are seperatly calmped to ring terminal 					
6	BROWN	1800	1,5	4P1BL		G-	FREE : REMOVE WIRE SHEATH BY 8M						
7	BROWN	1800	1,5	RA-		G-	FREE : REMOVE WIRE SHEATH BY 8M						
8	BROWN	1800	1,5	WP-		G-	FREE : REMOVE WIRE SHEATH BY 8M						
9	BROWN	1800	1,5	FP-		G-	FREE : REMOVE WIRE SHEATH BY 8M						
10	BROWN	1800	1,5	FS-		G-	FREE : REMOVE WIRE SHEATH BY 8M						
11	BROWN	1500	1,5	FG-		G-	FREE : REMOVE WIRE SHEATH BY 8M						
12	BROWN	1500	1,5	HM-		G-	FREE : REMOVE WIRE SHEATH BY 8M						
13	BROWN	1500	1,5	LV-		G-	FREE : REMOVE WIRE SHEATH BY 8M						
14	BROWN	700	1,5	VS1-		G-	FREE : REMOVE WIRE SHEATH BY 8M						
15	BROWN	700	1,5	VS2-		G-	FREE : REMOVE WIRE SHEATH BY 8M						
16	BROWN	500	1,5	HLFL-		G-	FREE : REMOVE WIRE SHEATH BY 8M						
17	BROWN	500	1,5	HLFR-		G-	FREE : REMOVE WIRE SHEATH BY 8M						
18	BROWN	500	1,5	AP-	REMOVE THE WIRE SHEATH BY 8MM	G-	FREE : REMOVE WIRE SHEATH BY 8M						
19	BROWN	500	1,5	TS-		G-	FREE : REMOVE WIRE SHEATH BY 8M						
20	RED	1400	1,5	JF	REMOVE THE WIRE SHEATH BY 8MM	M6-AL						M6-RING TERMINAL-RED	
21	RED	450	1,5	JF	REMOVE THE WIRE SHEATH BY 8MM	B(30)					B(30) belongs to key switch terminal		

22	RED	100	1,5	JF	REMOVE THE WIRE SHEATH BY 8MM	50FO		JF marked ends connected together			
23	RED	1200	1,5	50FI	REMOVE THE WIRE SHEATH BY 8MM	M8-ST			M8-RING TERMINAL		
24	RED	1300	1,5	F20		AL-IG			2 PIN CONNECTOR-SUPPLIED WITH KUBOTA ENGINE		
25	RED	1600	1,5	LB		AL-L					
26	RED	250	1,5	JL	REMOVE THE WIRE SHEATH BY 8MM	LB					
27	RED	250	1,5	JL	REMOVE THE WIRE SHEATH BY 8MM	LO					
28	RED	250	1,5	JL	REMOVE THE WIRE SHEATH BY 8MM	LW					
29	RED	200	1,5	JL	REMOVE THE WIRE SHEATH BY 8MM	F50		JL MARKED ENDS ARE CONECTED TOGETHER	FUSE BOX		
30	RED	2300	1,5	LW		WS				TERMINAL SHOULD BE ROTECTED BY COVER	
31	RED	1500	1,5	M4-OS		LO					
32	RED	600	1,5	T6		LG					
33	RED	450	1,5	LG		F70			FUSE BOX		
34	RED	200	1,5	T4		F60			FUSE BOX		
35	RED	200	1,5	T5		F10			FUSE BOX		
36	RED	700	1,5	FP		F40			FUSE BOX		
37	RED	2400	1,5	JG	REMOVE THE WIRE SHEATH BY 8MM	GP					
38	RED	300	1,5	JG	REMOVE THE WIRE SHEATH BY 8MM	19				KEY SWITCH	
39	RED	100	1,5	JG	REMOVE THE WIRE SHEATH BY 8MM	F6I				FUSE BOX	
40	RED	2100	1,5	SS1		F30					
41	RED	1500	1,5	ST1		JS	REMOVE THE WIRE SHEATH BY 8MM				
42	RED	1000	1,5	SS2		JS	REMOVE THE WIRE SHEATH BY 8MM				

43	RED	100	1,5	50		JK	REMOVE THE WIRE SHEATH BY 8MM			
44	RED	350	1,5	JK	REMOVE THE WIRE SHEATH BY 8MM	F1I				FUSE BOX
45	RED	100	1,5	JS	REMOVE THE WIRE SHEATH BY 8MM	ST1				STARTER TOP(WITH ENGINE)
46	RED	450	1,5	AC		F2I		KEY SWITCH		FUSE BOX
47	GREEN	1700	1,5	HR		F8O		HORN		FUES BOX
48	GREEN	2200	1							
49	GREEN									
50	BLUE	1600	1,5	JHL	REMOVE THE WIRE SHEATH BY 8MM	HLR				
51	BLUE	2000	1,5	JHL	REMOVE THE WIRE SHEATH BY 8MM	JLF	REMOVE THE WIRE SHEATH BY 8MM			
52	BLUE	100	1,5	JFL	REMOVE THE WIRE SHEATH BY 8MM	HLFL				
53	BLUE	100	1,5	JFL	REMOVE THE WIRE SHEATH BY 8MM	HLFR				
54	BLUE	100	1,5	JSL	REMOVE THE WIRE SHEATH BY 8MM	SBL				
55	BLUE	100	1,5	JSL	REMOVE THE WIRE SHEATH BY 8MM	SHL				
56	BLUE	450	1,5	JSL	REMOVE THE WIRE SHEATH BY 8MM	F9O				FUSE BOX
57	BLUE	1600	1,5	SBL		BLC				
58	ORANGE	1100	1,5	WP		SWP				
59	ORANGE	550	1,5	SWP		F10O				FUSE BOX
60	ORANGE	550	1,5	F11O		JG	REMOVE THE WIRE SHEATH BY 8MM	FUSE BOX		
61	ORANGE	100	1,5	JG	REMOVE THE WIRE SHEATH BY 8MM	HM+				
62	ORANGE	1300	1,5	FS		FG+				
63	ORANGE	100	1,5	JG	REMOVE THE WIRE SHEATH BY 8MM	FG				








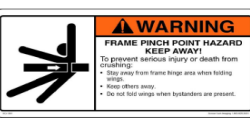


64	GREEN	2150	1,5	TS		STS				
65	GREEN	450	1,5	STS		JTV	REMOVE THE WIRE SHEATH BY 8MM			
66	WHITE	450	1,5	JTV	REMOVE THE WIRE SHEATH BY 8MM	M4-SP(2B)				
67	WHITE	400	1,5	M4-SP(2A)		LP				
68	WHITE	1400	1,5	JTV	REMOVE THE WIRE SHEATH BY 8MM	SESI				
69	WHITE	1800	1,5	SESO	REMOVE THE WIRE SHEATH BY 8MM	M4-SP(1B)				
70	WHITE	1800	1,5	M4-SP(1A)		AP	REMOVE THE WIRE SHEATH BY 8MM			
71	WHITE	1800	1,5	M4-SP(1A)		CLI(B)				
72	WHITE	1700	1,5	CLO(B)		JVSL	REMOVE THE WIRE SHEATH BY 8MM			
73	WHITE	300	1,5	JVSL	REMOVE THE WIRE SHEATH BY 8MM	LV				
74	WHITE	2200	1,5	SV1		VS1	REMOVE THE WIRE SHEATH BY 8MM			
75	WHITE	2200	1,5	SV2		VS2	REMOVE THE WIRE SHEATH BY 8MM			
76	GREEN	1100	1,5	CL(R)		RA				
77	GREEN	1550	1,5	CL(W)		F120			FUSEBOX	

LEGEND

DESCRIPTION	CODE
BEACON LIGHT	BL
BEACON LIGHT CONNECTOR	BLC
HEAD LIGHT REAR	HLR
4 PIN CONNECTOR-1 TOP LEFT	4P1TL
4 PIN CONNECTOR-1 BOTTOM LEFT	4P1BL
4 PIN CONNECTOR-1 TOP RIGHT	4P1TR
4PIN CONNECTOR-1 BOTTOM RIGHT	4P1BR
MAIN GROUND	G-
REVERSE ALARM	RA
WATER PUMP	WP
FUEL PUMP	FP
FUEL SENSOR	FS
FUEL GAUGE	FG
HOUR METER	HIM
LED-VIBRATION	LV
VIBRATION SOLENOID-1(TOP)	VS1
VIBRATION SOLENOID-2(BOTTOM)	VS2
HEAD LIGHT FRONT-LEFT	HLFL
HEADLIGHT FRONT-RIGHT	HLFR
AXIAL PUMP	AP
THROTTLE SOLENOID	TS
ALTERNATOR-M6 TERMINAL	M6-AL
JOINT-FUSE	JF
ALTERNATOR-IGNITION	AL-IG
ALTERNATOR-LAMP	AL-L
JOINT-LED	JL

LED-BATTERY		LB
FUSE-5 OUTPUT		F5O
LED-WATER		LW
LED-OIL PRESSURE		LO
WATER SENSOR		WS
GLOW PLUG TIMER- 6		T6
LED-GLOW		LG
FUSE-7 OUTPUT		F7O
M4 TERMINAL- OIL PRESSURE SENSOR		M4-OS
FUSE-6 OUTPUT		F6O
GLOW PLUG TIMER- 4		T6
FUSE-1 OUTPUT		F1O
FUEL PUMP		FP
FUSE-4 OUTPUT		F4O
JOINT-GLOWPLUG		JG
GLOW PLUG		GP
FUSE 6-INPUT		F6I
STOP SOLENOID-TOP LEAD		SS1
STARTER CONNECTOR		ST1
STOP SOLENOID-BOTTOM LEAD		SS2
JOINT-STARTER		JS
JOINT-KEY		JK
FUSE-1 INPUT		F1I
FUSE-2 INPUT		F2I
HORN		HR
FUSE 8-OUTPUT		F8O
JOINT-HEAD LIGHT		JHL
JOINT-FRONT LIGHT		JFL
JOINT-SWITCH LIGHTS		JSL
SWITCH-BEACON LIGHT		SBL
SWIITCH-HEAD LIGHT		SHL
FUSE 9-OUTPUT		F9O
SWITCH-WATER PUMP		SWP
FUSE10-OUTPUT		F10O
FUSE 11-OUTPUT		F11O
JOINT-GAUGE		JG
HOUR METER		HM
THROTTLE SOLENOID		TS
SWITCH THROTTLE SOLENIOD		STS
M4 TERMINAL-SWITCH PARKING(2B)		M4-SP(2B)
LED-PARKING		LP
JOINT-THROTTLE,VIBRATION		JTV
SEAT SWITCH INPUT		SESI
SEAT SWITCH OUTPUT		SESO
AXIAL PUMP		AP
CONTROL LEVER INPUT(BLACK)		CLi(B)
CONTROL LEVER OUTPUT(BLACK)		CLO(B)
SWITCH -VIBRATION(SINGLE)		SV1
SWITCH-VIBRATION(DOUBLE)		SV2
CONTROL LEVER(REDD)		CLi(R)
CONTROL LEVER(WHITE)		CLi(W)
FUSE 12-OUTPUT		F12O

14) LOGO (标志)  
(01-6001-2565-01)

#	DRAWING NO.	DECAL NAME	DESCRIPTION	LOCATION	REMARKS
1	01-3200-2570-01	GENERAL WARNING DECAL	BASIC PRECUATIONS TO BE FOLLOWED	CONTROL PANEL	
2	01-6000-2571-01	BATTERY DISCONNECT DECAL	TO REMIND SERVICEPERSON ; BEFORE SERVICING DISCONNECT THE BATTERY	NEAR BATTERY	
3	01-6000-2572-01	BELT WARNING DECAL	ENGINE BELT PRECAUTION	ABOVE THE RADIATOR	
4	01-6000-2573-01	HOOD CRUSH WARNING DECAL	TO REMIND BONNET CRUSHING	NEAR HINGE POINT OF HOOD	
5	01-6000-2574-01	HOT SURFACE WARNING	BURN HAZZARD	IN THE BONNET	
6	01-6000-2575-01	OPERATION MANUAL WARNING	REMINDER ABOUT READING THE OPERATIONAL MANUAL	CONTROL PANEL	
7	01-6000-2576-01	ROPS AND SEAT BELT WARNING	OPERATOR SAFTEY PRECAUTION	CONTROL PANEL	
8	01-6000-2577-01	ARTICULATION JOINT	PINCH POINT HAZARD WARNING	NEAR ARTICULATION JOINT	
9	01-6000-2581-01	HYDRAULIC OIL LEVEL	TO VERIFY HYDRALIC OIL	NEAR SIGHT GLASS	
10	01-6000-2578-01	HYDRAULIC OIL DRAIN	TO DRAIN THE HYDRAULIC TANK	NEAR THE HYDRAULIC DRAIN	



11	01-2000-2579-01	WATER DRAIN	TO DRAIN THE WATER TANK	NEAR THE WATER TANK	 WATER DRAIN
12	01-6000-1308-01	ENGINE OIL DRAIN	TO DRAIN THE ENGINE OIL	NEAR THE ENGINE DRAIN EXTENSION	 ENGINE OIL DRAIN
13	RAM-TZC	DIESEL ONLY DECAL	FUEL WARNING	NEAR DIESEL FILLING PORT	 USE DIESEL ONLY
14		WATER TANK DECAL	WATER FILLING POINT	NEAR THE WATER FILLING PORT	 Water
15	J1-BG-39*45	LIFTING POINT	FOR LIFTING THE MACHINE	FOUR POINTS	
16	J1-BG-45*75	PPE WARNING	PERSONAL PROTECTIVE SYMBOLS	CONTROL PANEL	
17	01-6000-2580-01	GREASE POINT	TO LOCATE THE GREASING POINTS	DIFFERENT LOCATIONS	
18	01-6000-1304-01	HAZARDOUS GAS DECAL	EXHAUST WARNING DECAL	NEAR ENGINE EXHAUST	
19	01-6000-1307-01	CONTROL PANEL STICKET	INFORMATION ABOUT SWITCHES/LEDS	IN CONTROL PANEL	
20		SPRINKLER	DIAGPHRGAM PUMP LOCATION	NEAR FOOT STEP	 Sprinkler
21	01-6000-2598-01	DVR16 LOGO	MACHINE NAME	FRONT,SIDE, REAR	 DVR16
22	01-6000-1303-01	ROADMASTER 900	LOGO	BACK	 ROADMASTER 900
23	01-6000-2597-01	HOPPT	HOPPT BIG LOGO	SIDE	 hoppt®

24	01-6000-2599-01	MENIGOTTI	MENIGOTTI LOGO	FRONT,SIDE, REAR	
----	-----------------	-----------	----------------	------------------	---