

# PC100DZ

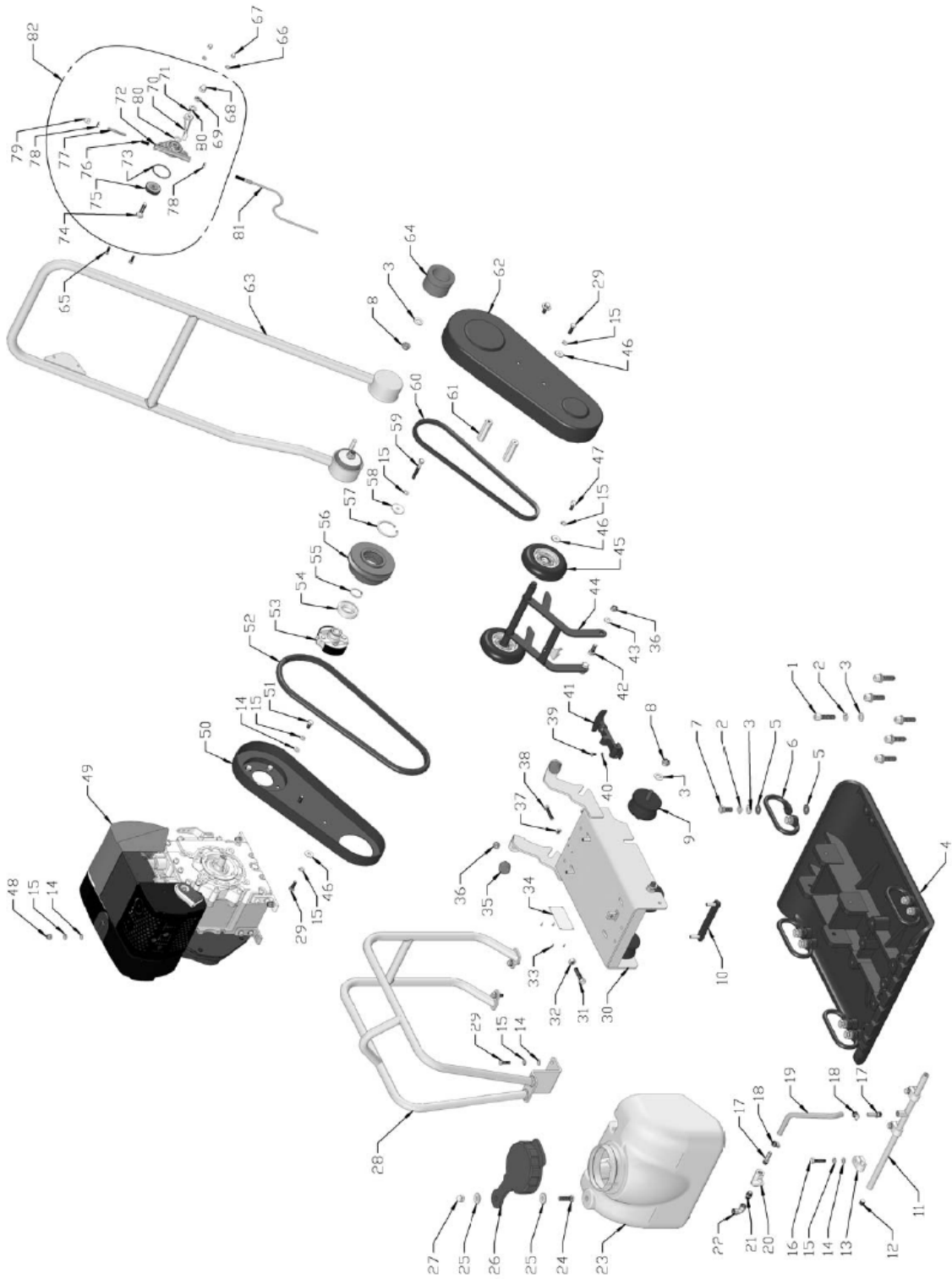
---



## Spare Parts



# MAIN FRAME ASSEMBLY



# MAIN FRAME ASSEMBLY

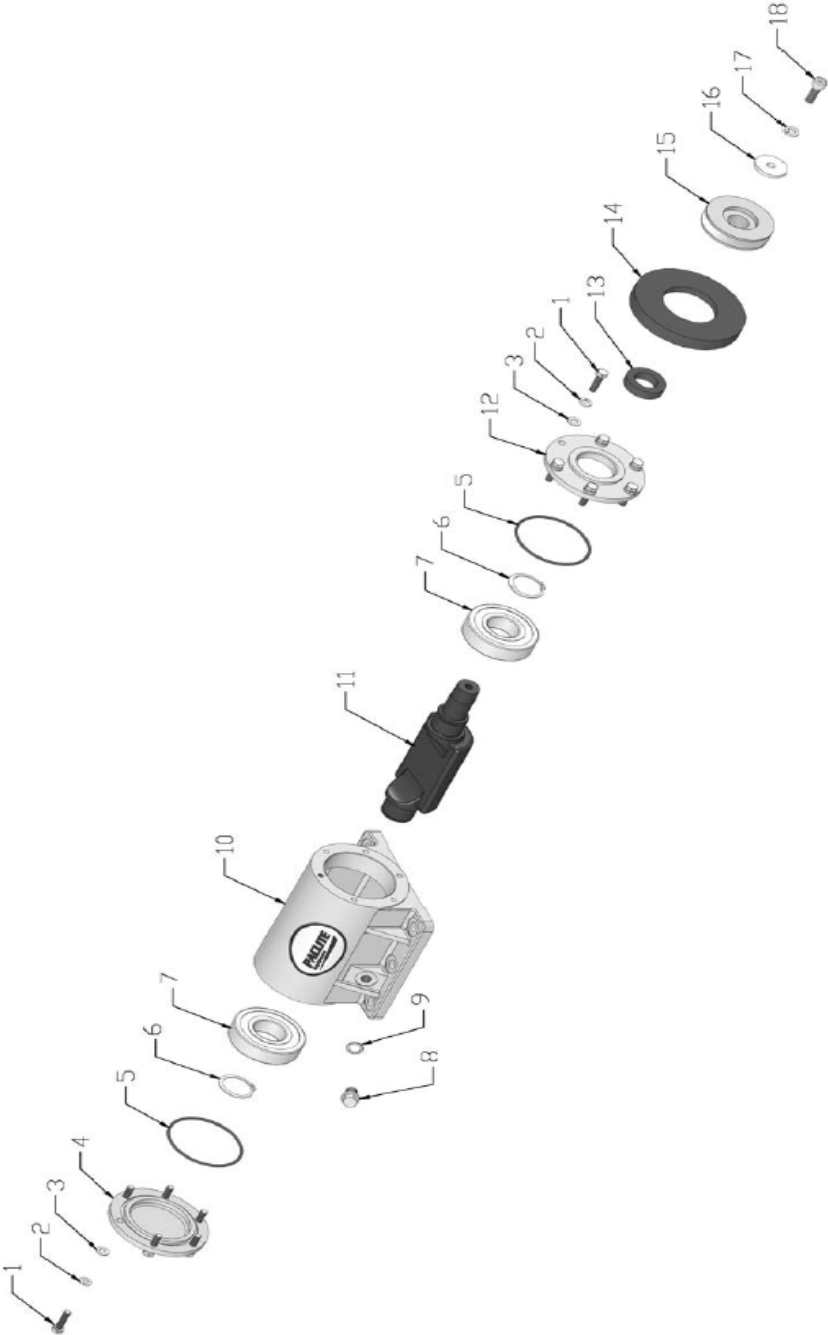
NO.	PART NO.	PART DESCRIPTION	QTY
01-1	PC100DZ-HS.B-M12x45-12.9-GB-3	SCREW	6
01-2	PC100DZ-HSPG.W12-DIN-1	SPRING WASHER,TANG ENDS	14
01-3	PC100DZ-FN.W12-DIN-1	WASHER	20
01-4	PC100DZ-90P-010500	BASIC PLATE	1
01-5	PC100DZ-90P-010600	RUBBER WASHER	16
01-6	PC100DZ-90P-010100	HANDLE	4
01-7	PC100DZ-FN.B-M12x25-8.8-DIN-1	BOLT	8
01-8	PC100DZ-IN.N-M12-DIN-2	LOCK NUT	6
01-9	PC100DZ-90P-030800	SHOCK ABSORBER	4
01-10	PC100DZ-90P-032000Z	FIX ENGINE BOLT	2
01-11	PC100DZ-90P-010800	SPRINKLING PIPE	1
01-12	PC100DZ-HSHOS.B-ZG1-4	HEXAGONAL SOCKET HEAD PLUG	2
01-13	PC100DZ-90P-010901	HOOP	3
01-14	PC100DZ-FN.W8-DIN-1	WASHER	15
01-15	PC100DZ-HSPG.W8-DIN-1	SPRING WASHER,TANG ENDS	22
01-16	PC100DZ-FN.B-M8x35-8.8-DIN-1	BOLT	3
01-17	PC100DZ-CPT-BT-1/4-10	HOSE NIPPLE	2
01-18	PC100DZ-90P-070006	HOSE CLAMP	2
01-19	PC100DZ-60W-010700-1	WATER PIPE	1
01-20	PC100DZ-QF-1/4-NI	VALVE	1
01-21	PC100DZ-CPT-BT-1/4	JOINT	1
01-22	PC100DZ-CPT-JT-ZG1/4	90° ELBOW	1
01-23	PC100DZ-90P-070000B	WATER TANK	1
01-24	PC100DZ-FN.B-M10x35-8.8-DIN-1	BOLT	1
01-25	PC100DZ-WOD.W10-GB-1	WASHER	2
01-26	PC100DZ-650-070200	WATER TANK CAP	1
01-27	PC100DZ-HC.N-M10-DIN-1	CAP NUT	1
01-28	PC100DZ-90P-100000Z	WATER TANK FRAME	1
01-29	PC100DZ-FN.B-M8x25-8.8-DIN-1	BOLT	8
01-30	PC100DZ-90P-090000Z	ENGINE BASE	1
01-31	PC100DZ-FN.B-M10x45-8.8-DIN-1	BOLT	1
01-32	PC100DZ-FN.N-M10-DIN-1	NUT	1
01-33	PC100DZ-K.RVT-3.2x7.1	RIVET	4
01-34	PC100DZ-D4-MP-P	NAMEPLATE	1
01-35	PC100DZ-80-0408	CUSHION	2

01-36	PC100DZ-IN.N-M10-DIN-1	LOCK NUT	4
01-37	PC100DZ-FN.N-M8-DIN-1	NUT	2
01-38	PC100DZ-FN.B-M8x40-8.8-DIN-1	BOLT	2
01-39	PC100DZ-FN.B-M5x10-8.8-DIN-1	BOLT	4
01-40	PC100DZ-SPG.W5-DIN-1	SPRING WASHER	4
01-41	PC100DZ-500S-010505	BUCKLE	1
01-42	PC100DZ-FN.B-M10x25-8.8-DIN-1	BOLT	2
01-43	PC100DZ-FN.W10-DIN-1	WASHER	2
01-44	PC100DZ-60W-040100	WHEEL FRAME	1
01-45	PC100DZ-60W-040200	WHEEL	2
01-46	PC100DZ-WOD.W8-GB-1	WASHER	6
01-47	PC100DZ-FN.B-M8x20-8.8-DIN-1	BOLT	2
01-48	PC100DZ-IN.N-M8-DIN-1	LOCK NUT	4
01-49	PC100DZ-W05-1B20-6	ENGINE	1
01-50	PC100DZ-90P-040400Y	INNER BELT GUARD	1
01-51	PC100DZ-FN.B-M8x16-8.8-DIN-1	BOLT	4
01-52	PC100DZ-90P-040600Y	SEAL	1
01-53	PC100DZ-80-0500E	CENTRIFUGAL CLUTCH	1
01-54	PC100DZ-W01-6006ZZ-J	BEARING	1
01-55	PC100DZ-CS.RG30	EXTERNAL CIRCLIP	1
01-56	PC100DZ-90P-031800	CLUTCH PULLEY	1
01-57	PC100DZ-CH.RG55	INTERNAL CIRCLIP	1
01-58	PC100DZ-606-070101	WASHER	1
01-59	PC100DZ-FN.B-M8x60-8.8HALF-DIN-1	BOLT	1
01-60	PC100DZ-W02-A37	V-BELT	1
01-61	PC100DZ-90P-040300Y	CONNECTION POLE	2
01-62	PC100DZ-90P-040500Y	OUTER BELT GUARD	1
01-63	PC100DZ-90P-110000Y	HANDRAIL	1
01-64	PC100DZ-40-060300	HANDRAIL ABSORBER	2
01-65	PC100DZ-FN.B-M6x20-8.8-DIN-2	BOLT	2
01-66	PC100DZ-HSPG.W6-DIN-2	SPRING WASHER,TANG ENDS	2
01-67	PC100DZ-HC.N-M6-DIN-2	CAP NUT	2
01-68	PC100DZ-HC.N-M10-DIN-2	CAP NUT	1
01-69	PC100DZ-FNL.N-M10-DIN-2	HEXAGON THIN NUT	1
01-70	PC100DZ-70ND-060000	THROTTLE LEVER	1
01-71	PC100DZ-FHSS.S-M6x8-GB-3	SOCKET SCREW WITH FLAT HEAD	1
01-72	PC100DZ-70ND-060001	THROTTLE BODY	1
01-73	PC100DZ-W04-45x3	O-RING	1
01-74	PC100DZ-70ND-060003	BOLT	1
01-75	PC100DZ-70ND-060002	THROTTLE GEAR	1

01-76	PC100DZ-FHSS.S-M8x20-GB-3	SOCKET SCREW WITH FLAT HEAD	1
01-77	PC100DZ-70ND-060004	SLIDER	1
01-78	PC100DZ-FNL.N-M8-DIN-2	HEXAGON THIN NUT	2
01-79	PC100DZ-HC.N-M8-DIN-2	CAP NUT	1
01-80	PC100DZ-FN.W10-DIN-2	WASHER	2
01-81	PC100DZ-W06-S04-L1100x1300	THROTTLE CABLE	1
01-82	PC100DZ-70ND-010018	THROTTLE LEVER ASSY	1

# EXCITING HOUSING ASSEMBLY

---



# EXCITING HOUSING ASSEMBLY

NO.	PART NO.	PART DESCRIPTION	QTY
02-1	PC100DZ-FN.B-M8x30-8.8-DIN-1	BOLT	12
02-2	PC100DZ-HSPG.W8-DIN-1	SPRING WASHER,TANG ENDS	12
02-3	PC100DZ-FN.W8-DIN-2	WASHER	12
02-4	PC100DZ-90P-020400	CLOSE COVER	1
02-5	PC100DZ-W04-90x3.5	O RING	2
02-6	PC100DZ-CS.RG40	EXTERNAL CIRCLIP	2
02-7	PC100DZ-W01-6308ZZC3E-J	BEARING	2
02-8	PC100DZ-HHOS.B-M14x1.5	HEXAGON HEAD PLUG	1
02-9	PC100DZ-GB97.1-M14	CUPRUM WASHER	1
02-10	PC100DZ-90P-020100P	EXCITER HOUSING	1
02-11	PC100DZ-90P-020200A	EXCITER SHAFT	1
02-12	PC100DZ-90P-020300	COVER	1
02-13	PC100DZ-W03-50x30x12	OIL SEAL	1
02-14	PC100DZ-90P-020500	COVER GUARD	1
02-15	PC100DZ-90P-031900	EXCITER PULLEY	1
02-16	PC100DZ-80-0303	PULLEY WASHER	1
02-17	PC100DZ-HSPG.W10-DIN-1	SPRING WASHER,TANG ENDS	1
02-18	PC100DZ-90B-010800	VENT SCREW	1










**Uni-corp Europe S.A.R.L.**  
**Paclite Equipment**

33 Avenue Pierre Brossolette,  
94048 Créteil Cedex,  
FRANCE

 +33 (0) 1 49 81 69 55

 +33 (0) 1 48 98 40 88

 [sales@paclite-equip.com](mailto:sales@paclite-equip.com)

 [paclite-equip.com](http://paclite-equip.com)



**2010**

---