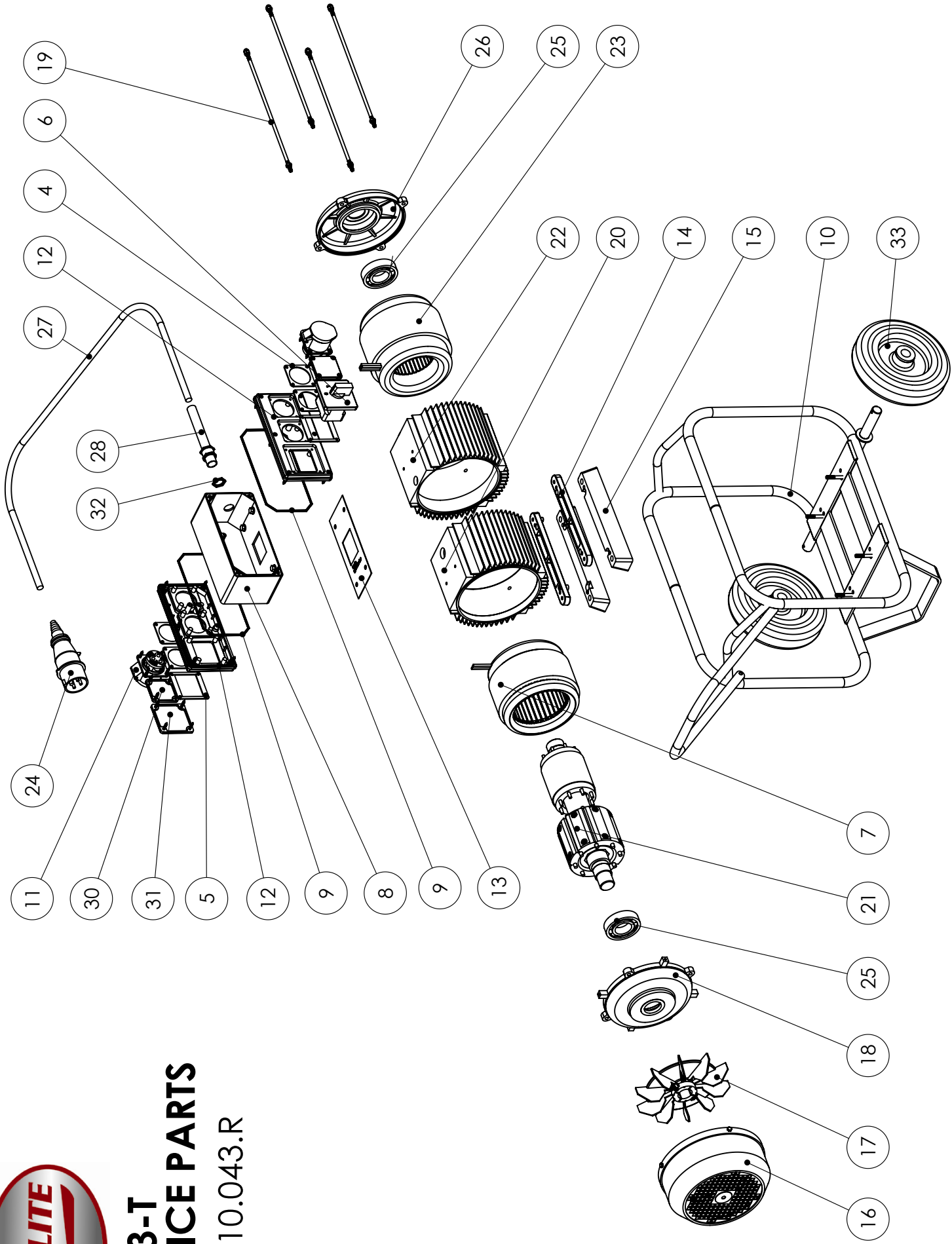




FUZ33-T SERVICE PARTS

PACLI10.043.R



PACLITE		Rev. nº 0	
SPARE PARTS LIST		Date: 11/05/2009	
HIGH FREQUENCY CONVERTER TRIPHASE 400V 50Hz FUZ33 - T (YELLOW)			PACLI 10.043.R
QTY.	DENOMINATION	DRAW Nº	CODE
3	SOCKET JOINT	4	PACLI 56.018
2	SWITCH JOINT	5	PACLI 56.040
1	3 PHASE SWITCH BHUPLAT DE 8A	6	PACLI 66.016
1	ASSY STATOR GENERATOR COMP.	7	PACLI 24.075
1	PLASTIC BOX CONNECTOR	8	PACLI 30.227.1
2	JOINT RUBBER PLASTIC BOX COVER DIAM. 3x580	9	PACLI 76.067
1	CHASSIS + WHEELS	10	PACLI 53.504.CR
3	SWITCH SOCKET 50V 32A	11	PACLI 65.005
2	PLASTIC BOX COVER (SWITCH + SOCKETS)	12	PACLI 30.228.1
1	PLASTIC JOINT RUBBER BOX	13	PACLI 76.066
2	BOTTOM RUBBER BRACKET	14	PACLI 30.113.1
2	BOTTOM RUBBER	15	PACLI 56.059
1	FAN COVER	16	PACLI 48.010
1	FAN WITH HOSE CLAMP	17	PACLI 33.006
1	GENERATOR BEARING COVER SEAT	18	PACLI 30.170.1
4	BOLT JOINT M6x318	19	PACLI 84.120
1	GENERATOR HOUSING	20	PACLI 30.237.1
1	COMPLETE ROTOR SET	21	PACLI 26.048
1	MOTOR HOUSING	22	PACLI 30.238.1
1	ASSY STATOR MOTOR COMP.	23	PACLI 24.076
1	CETAC PLUG 3P+T 16A	24	PACLI 65.015
2	BEARING 6207 2 NSE 35.72.17	25	PACLI 75.045
1	MOTOR BEARING COVER SEAT	26	PACLI 30.171.1
1	CONNECTION CABLE 4x2,5 (5MTRS)	27	PACLI 60.007.H07.5
1	PACKING PLASTIC BOX CONNECTOR M20/16RL	28	PACLI 62.089
2	SWITCH SOCKET COVER	30	PACLI 30.230.1
1	SWITCH COVER	31	PACLI 30.229.1
1	METALLIC NUT M 20	32	PACLI 62.090
2	WHEEL Ø 200x50	33	PACLI 45.003