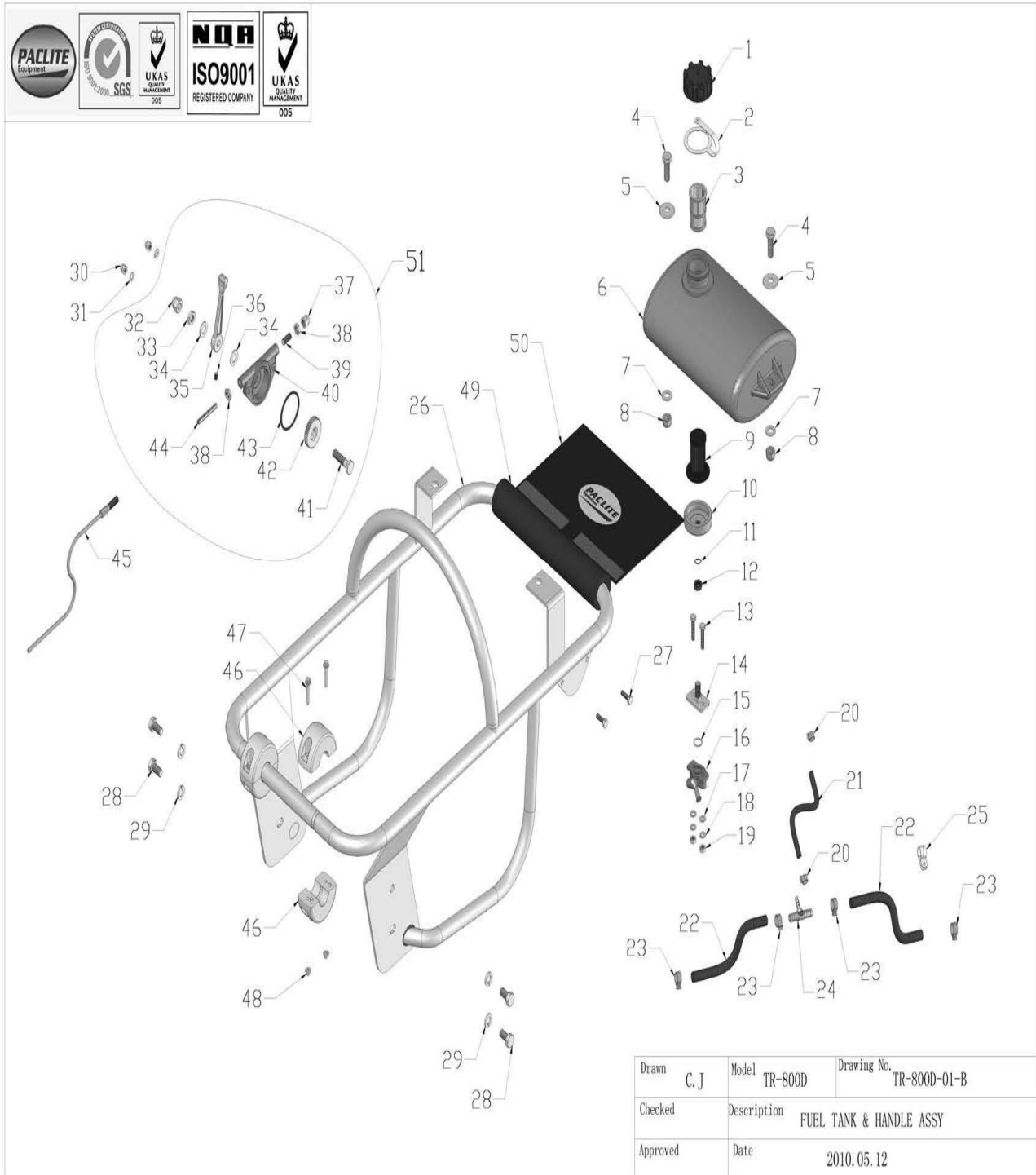


TR-800D-01 FUEL TANK & HANDLE ASSY

NO.	PART NO.	PART DESCRIPTION	QTY	UNIT PRICE EUR & USD 2015
01-1	TR-800D-70B-010112P	FUEL TANK CAP	1	34,67
01-2	TR-800D-70B-010113P	STRAP	1	4,65
01-3	TR-800D-70ND-010114	STRAINER	1	18,49
01-4	TR-800D-FN.B-M8x30-8.8-DIN-1	BOLT	2	0,23
01-5	TR-800D-WOD.W10-GB-1	LARGE WASHER	2	0,23
01-6	TR-800D-85d-010109	FUEL TANK	1	80,52
01-7	TR-800D-FN.W8-DIN-1	WASHER	2	0,18
01-8	TR-800D-IN.N-M8-DIN-1	LOCK NUT	2	0,18
01-9	TR-800D-85d-010114	DIESEL OIL STRAINER, BOTTOM	1	14,44
01-10	TR-800D-85d-010113	FUEL TANK CAP, BOTTOM	1	32,94
01-11	TR-800D-W04-10x1	O RING	1	4,69
01-12	TR-800D-85d-070303	NUT	1	2,94
01-13	TR-800D-FN.B-M6x30-8.8-DIN-1	BOLT	2	0,18
01-14	TR-800D-85d-070300	CONNECTOR,FUEL TANK	1	34,68
01-15	TR-800D-W04-14x1.5	O RING	1	6,99
01-16	TR-800D-KM168F-10400	FUEL VALVE	1	16,19
01-17	TR-800D-FN.W6-DIN-1	WASHER	2	0,18
01-18	TR-800D-HSPG.W6-DIN-1	SPRING WASHER	2	0,18
01-19	TR-800D-FN.N-M6-DIN-1	NUT	2	0,18
01-20	TR-800D-85d-000030	HOSE BAND	2	1,20
01-21	TR-800D-85d-000029	FUEL RETURN HOSE	1	1,20
01-22	TR-800D-85d-000027	FUEL HOSE	2	1,75
01-23	TR-800D-85d-000026	HOSE BAND	4	1,20
01-24	TR-800D-85d-000028	JOINT	1	2,94
01-25	TR-800D-85DZ-010200	CLIP	1	0,41
01-26	TR-800D-85DZ-010100P	OPERATION HANDLE	1	144,27
01-27	TR-800D-FN.B-M6x20-8.8-DIN-2	BOLT	2	0,18
01-28	TR-800D-FN.B-M10x25-8.8-DIN-1	BOLT	4	0,32
01-29	TR-800D-HSPG.W10-DIN-1	SPRING WASHER	4	0,18
01-30	TR-800D-HC.N-M6-DIN-2	CAP NUT	2	0,18
01-31	TR-800D-HSPG.W6-DIN-2	SPRING WASHER	2	0,18
01-32	TR-800D-HC.N-M10-DIN-2	CAP NUT	1	0,46
01-33	TR-800D-FNL.N-M10-DIN-2	THIN NUT	1	0,18
01-34	TR-800D-FN.W10-DIN-2	WASHER	2	0,18
01-35	TR-800D-70ND-060000	THROTTLE LEVER	1	22,49
01-36	TR-800D-FHSS.S-M6x8-GB-3	SOCKET HEAD SCREW	1	0,23
01-37	TR-800D-HC.N-M8-DIN-2	CAP NUT	1	0,28
01-38	TR-800D-FNL.N-M8-DIN-2	THIN NUT	2	0,23
01-39	TR-800D-FHSS.S-M8x20-GB-3	SOCKET HEAD SCREW	1	0,28
01-40	TR-800D-70ND-060001	THROTTLE BODY	1	31,19
01-41	TR-800D-70ND-060003	BOLT	1	12,74
01-42	TR-800D-70ND-060002	THROTTLE GEAR	1	25,44

01-43	TR-800D-W04-45x3	O-RING	1	4,65
01-44	TR-800D-70ND-060004	SLIDER	1	7,54
01-45	TR-800D-W06-S04-L600x800	THROTTLE CABLE	1	36,57
01-46	TR-800D-65ND-010100	ROLLER	4	22,54
01-47	TR-800D-HF.B-M5x20-8.8-DIN-3	HEXAGON FLANGE BOLT	4	0,23
01-48	TR-800D-HF.N-M5-DIN-3	HEXAGON FLANGE NUT	4	0,24
01-49	TR-800D-70ND-000028	HANDLE FOAM	1	8,69
01-50	TR-800D-70ND-000029P	HANDLE CLOTH	1	15,00
01-51	TR-800D-70ND-010018	THROTTLE LEVER ASSY	1	77,94

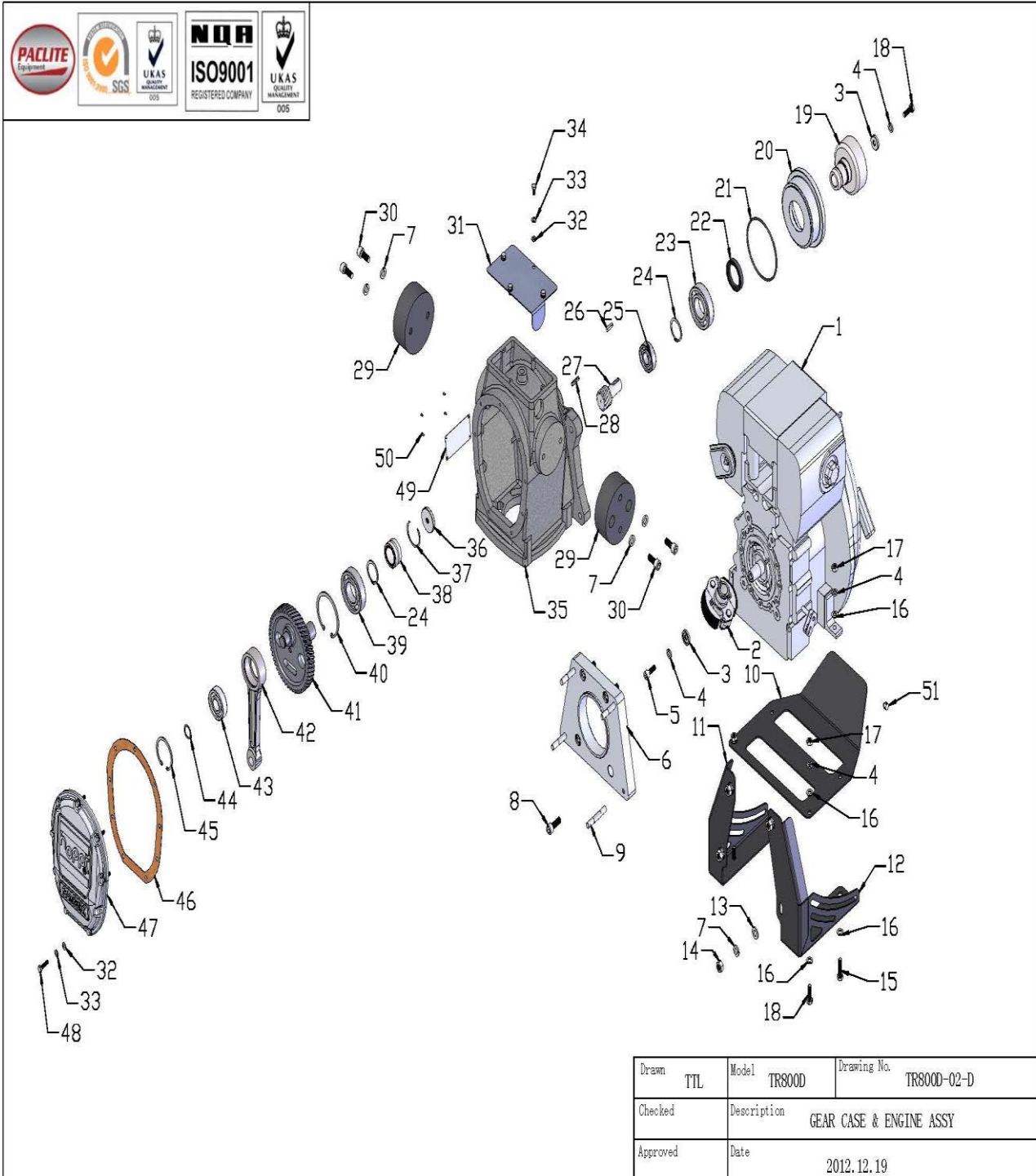


Drawn	C. J	Model	TR-800D	Drawing No.	TR-800D-01-B
Checked		Description	FUEL TANK & HANDLE ASSY		
Approved		Date	2010.05.12		

TR-800D-02 GEAR CASE & ENGINE ASSY

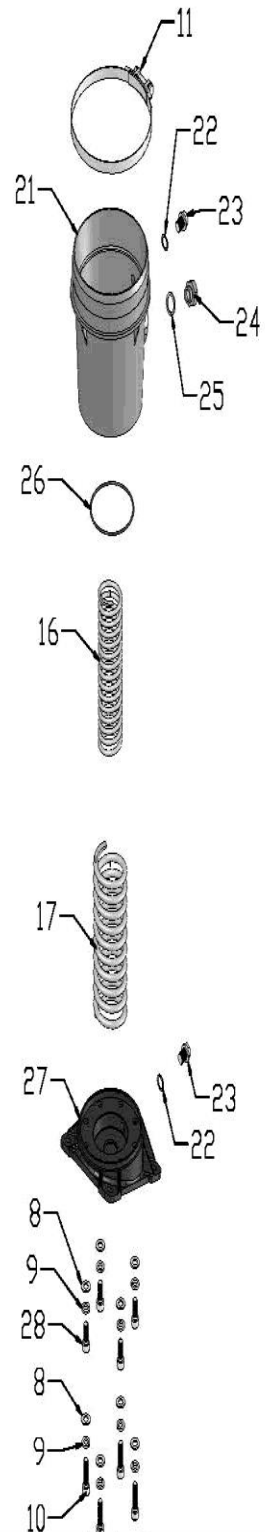
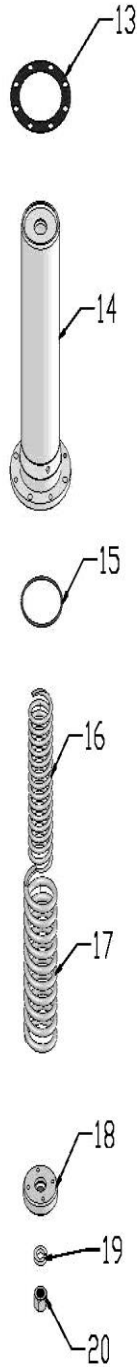
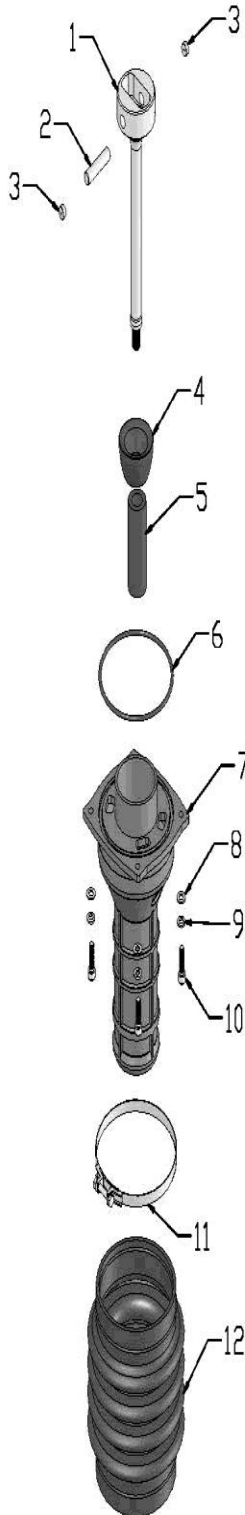
NO.	PART NO.	PART DESCRIPTION	QTY	UNIT PRICE EUR & USD 2015
02-1	TR-800D-W05-1B20	ENGINE	1	
02-2	TR-800D-W18-090-2792	CENTRIFUGAL CLUTCH ASSY	1	207,00
02-3	TR-800D-70B-020129	LOCK WASHER	2	3,50
02-4	TR-800D-SPG.W8-DIN-1	SPRING WASHER	6	0,18
02-5	TR-800D-HS.B-M8x25-8.8-GB-1	SCREW	1	0,23
02-6	TR-800D-85DZ-020200-A	FLANGE	1	143,89
02-7	TR-800D-SPG.W10-DIN-1	SPRING WASHER	12	0,18
02-8	TR-800D-HS.B-M10x30-8.8-GB-1	SCREW	4	0,37
02-9	TR-800D-85DZ-020400	BOLT	4	6,99
02-10	TR-800D-85DZ-020600	SUPPORT BASE	1	40,71
02-11	TR-800D-85DZ-020700	SUPPORT BRACKET ®	1	44,16
02-12	TR-800D-85DZ-020800	SUPPORT BRACKET (L)	1	46,37
02-13	TR-800D-FN.W10-DIN-1	WASHER	4	0,18
02-14	TR-800D-FN.N-M10x1.25-DIN-1	THIN NUT	4	0,23
02-15	TR-800D-FN.B-M8x30-8.8-DIN-1	BOLT	4	0,23
02-16	TR-800D-FN.W8-DIN-1	WASHER	8	0,18
02-17	TR-800D-FN.N-M8-DIN-1	NUT	4	0,18
02-18	TR-800D-FN.B-M8x25-8.8-DIN-1	BOLT	1	0,18
02-19	TR-800D-70B-020119A	CLUTCH HOUSING	1	91,77
02-20	TR-800D-70ND-020112	SPACER	1	2,94
02-21	TR-800D-W04-99.6x3.5	O RING	1	4,69
02-22	TR-800D-W03-52x40x8	OIL SEAL	1	4,69
02-23	TR-800D-W01-6207Z-J	BEARING	1	20,79
02-24	TR-800D-CS.RG35	EXTERNAL CIRCLIP	2	0,46
02-25	TR-800D-W01-6204-J	BEARING	1	7,77
02-26	TR-800D-Key.A-5x5x22	KEY	1	4,69
02-27	TR-800D-85d-020124	PINION	1	71,42
02-28	TR-800D-SC.PIN-6x25	SPRING PIN	1	0,28
02-29	TR-800D-70B-020125	SHOCK ABSORBER	2	91,77
02-30	TR-800D-HS.B-M10x35-8.8-GB-1	SCREW	4	0,37
02-31	TR-800D-85DZ-020500	COVER	1	6,99
02-32	TR-800D-FN.W6-DIN-1	WASHER	13	0,18
02-33	TR-800D-SPG.W6-DIN-1	SPRING WASHER	13	0,18
02-34	TR-800D-FN.B-M6x12-8.8-DIN-1	BOLT	4	0,18
02-35	TR-800D-85d-010000	GEAR CASE	1	425,56
02-36	TR-800D-70B-020101	WASHER	1	8,14
02-37	TR-800D-70B-020112	INTERNAL CIRCLIP	1	2,94
02-38	TR-800D-W01-TAF324220	BEARING	1SET	187,58
	TR-800D-W01-TLRT283220			
02-39	TR-800D-W01-6207-J	BEARING	1	17,34
02-40	TR-800D-CH.RG72	INTERNAL CIRCLIP	1	1,56
02-41	TR-800D-85d-020115	CRANK GEAR	1	266,89

02-42	TR-800D-70ND-020102	CONNECTING ROD	1	99,15
02-43	TR-800D-W01-6304-J	BEARING	1	17,39
02-44	TR-800D-CS.RG20	EXTERNAL CIRCLIP	1	0,23
02-45	TR-800D-CH.RG52	INTERNAL CIRCLIP	1	0,91
02-46	TR-800D-70ND-020114	PACKING,FRONT COVER	1	2,39
02-47	TR-800D-85d-020103P	FRONT COVER	1	71,45
02-48	TR-800D-FN.B-M6x25-8.8-DIN-1	BOLT	9	0,18
02-49	TR-800D-80-0409	NAMEPLATE	1	1,79
02-50	TR-800D-K.RVT-2.5x5	RIVET	4	0,18



TR-800D-03 GUIDE CYLINDER & SPRING ASSY

NO.	PART NO.	PART DESCRIPTION	QTY	UNIT PRICE EUR & USD 2015
03-1	TR-800D-70ND-020001	PISTON ROD	1	216,40
03-2	TR-800D-70ND-020215	PISTON PIN	1	32,94
03-3	TR-800D-70ND-020211	NYLON STOPPLE	2	6,99
03-4	TR-800D-70ND-020221	STOPPER	1	32,94
03-5	TR-800D-70ND-020219	SPRING GUIDE	1	36,98
03-6	TR-800D-W04-159.3x5.7	O RING	1	4,69
03-7	TR-800D-70ND-020206	GUIDE CYLINDER	1	259,70
03-8	TR-800D-FN.W10-DIN-1	WASHER	12	0,18
03-9	TR-800D-SPG.W10-DIN-1	SPRING WASHER	12	0,18
03-10	TR-800D-HS.B-M10x35-GB-1	SCREW	8	0,37
03-11	TR-800D-70B-021000	BELLOW HOOP	2	10,99
03-12	TR-800D-70B-020216P	BELLOW	1	189,00
03-13	TR-800D-70ND-020218	PACKING	1	4,69
03-14	TR-800D-70ND-020220	SPRING CYLINDER	1	244,17
03-15	TR-800D-W04-88x3.5	O RING	1	4,69
03-16	TR-800D-70ND-020201	INNER SPRING	2	73,62
03-17	TR-800D-70ND-020202	OUTER SPRING	2	90,94
03-18	TR-800D-70ND-020210	PISTON	1	28,34
03-19	TR-800D-SPG.W18-DIN-3	SPRING WASHER	1	0,28
03-20	TR-800D-FNL.N-M18x1.5-DIN-1	THIN NUT	1	1,56
03-21	TR-800D-70ND-020222	PROTECTION SLEEVE	1	133,49
03-22	TR-800D-GB97.1-M14	CUPRUM WASHER	2	0,41
03-23	TR-800D-HHOS.B-M14x1.5	HEXAGON HEAD PLUG	2	1,56
03-24	TR-800D-100GB-041000	OIL GAUGE	1	24,29
03-25	TR-800D-ZH-D-M20	WASHER	1	0,28
03-26	TR-800D-W04-94.4x3.1	O RING	1	4,69
03-27	TR-800D-85ND-030200	FOOT PLATE	1	77,94
03-28	TR-800D-HS.B-M10x25-GB-1	SCREW	4	0,28



Drawn	C. J	Model	TR-800D	Drawing No.	TR-800D-03-A
Checked		Description	GUIDE CYLINDER & SPRING ASSY		
Approved		Date	2010.05.12		

TR-800D-04 RAMMER SHOE ASSY

NO.	PART NO.	PART DESCRIPTION	QTY	UNIT PRICE EUR & USD 2015
04-1	TR-800D-70ND-030106	RAMMER SHOE STEEL PLATE	1	56,34
04-2	TR-800D-70ND-030104	RAMMER SHOE WOODEN PLATE	1	119,03
04-3	TR-800D-70ND-030105	RAMMER SHOE CLAMP PLATE	1	32,94
04-4	TR-800D-FN.W10-DIN-1	WASHER	8	0,18
04-5	TR-800D-IN.N-M10-DIN-1	LOCK NUT	7	0,28
04-6	TR-800D-FSN.B-M10x50	SUNK HEAD BOLT	8	6,39
04-7	TR-800D-FSN.B-M12x65	SUNK HEAD BOLT	2	6,99
04-8	TR-800D-SPG.W10-DIN-1	SPRING WASHER	1	0,18
04-9	TR-800D-EYE.N-M10-DIN-2	LIFTING EYE NUT	1	9,29
04-10	TR-800D-IN.N-M12-DIN-1	LOCK NUT	4	0,37
04-11	TR-800D-SPG.W12-DIN-1	SPRING WASHER	4	0,18
04-12	TR-800D-FN.W12-DIN-1	WASHER	2	0,18
04-13	TR-800D-70ND-030100	HANDLE	1	21,99
04-14	TR-800D-FSN.B-M12x70	SUNK HEAD BOLT	2	7,54

