

## 400.00.10000 CODE SUPER SCREED

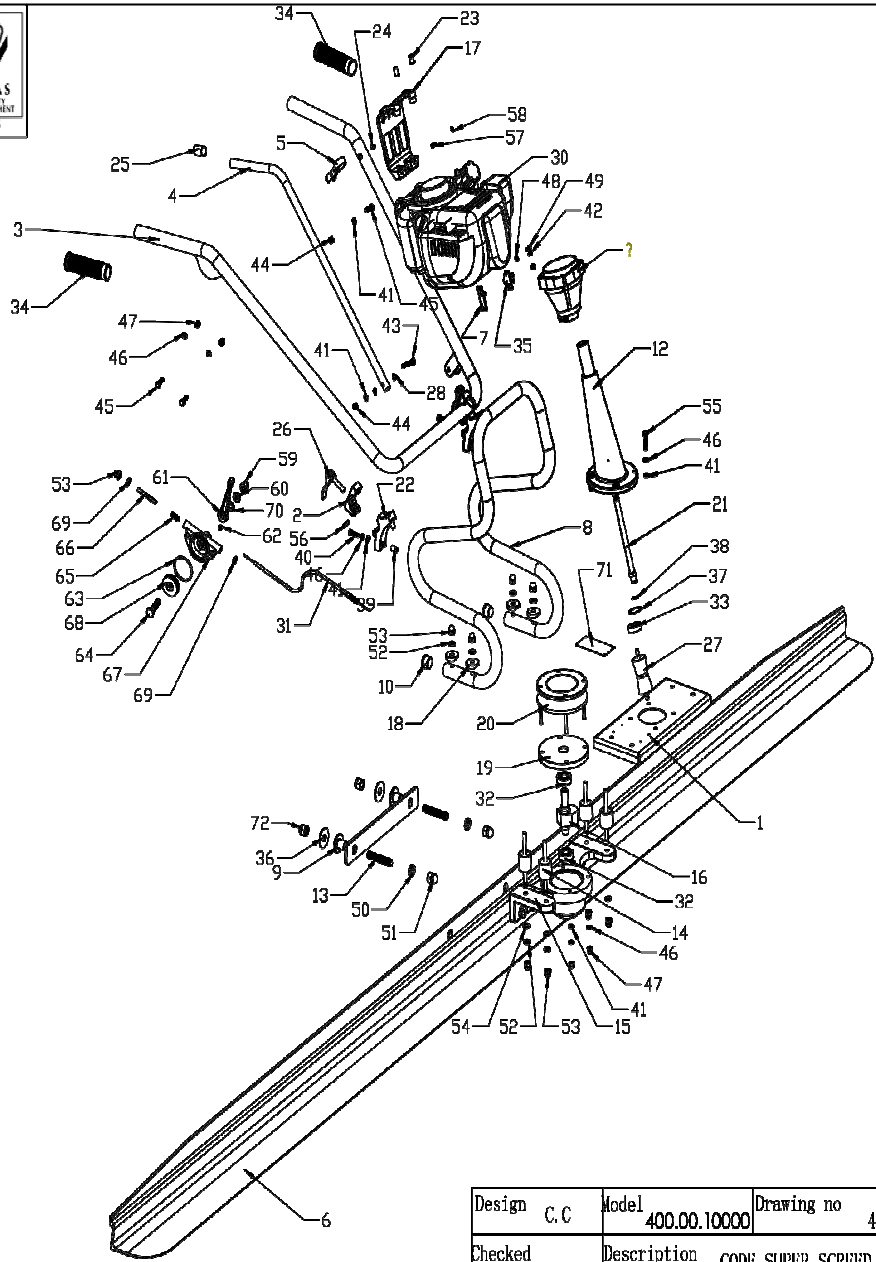
EURO

NO.	PART NO.	PART DESCRIPTION	QTY	REMARKS
1	400.00.10000-HCS50-0100	BOTTOM PLATE	1	
2	400.00.10000-HCS50-0200	PRESS BUTTON	2	
3	400.00.10000-HCS50-0300	HANDLE	1	
4	400.00.10000-HCS50-0400	FEET	1	
5	400.00.10000-HCS50-0500	HOOP	1	
6	400.00.10000-HCS50-0600	SCREED BLADE	1	175
	400.00.10000-HCS50-0600.1	SCREED BLADE		255
	400.00.10000-HCS50-0600.2	SCREED BLADE		
	400.00.10000-HCS50-0600.3	SCREED BLADE		
7	400.00.10000-HCS50-0700	SWITCH PLATE	1	
8	400.00.10000-HCS50-0800	PROTECTIVE FRAME	1	
9	400.00.10000-HCS50-1000	NYLON SLEEVE	2	
10	400.00.10000-HCS50-1100	PLUG	2	
11	400.00.10000-HCS50-1200	CLUTCH ASSEMBLY	1	52,96
12	400.00.10000-HCS50-1300	DRIVER SHAFT HOSING	1	
13	400.00.10000-HCS50-1400	CONNECTING SCREW	2	
14	400.00.10000-HCS50-1500	VIBBRATION DAMPER	4	32,55
15	400.00.10000-HCS50-1600	VIBRATION BRACKET	1	
16	400.00.10000-HCS50-1700	ECCENTRIC SHAFT	1	
17	400.00.10000-HCS50-1800	TANK PROTECTION PLATE	1	14,3
18	400.00.10000-HCS50-1900	ARC WASHER	4	
19	400.00.10000-HCS50-2000	FLANGE	1	67,24
20	400.00.10000-HCS50-2100	VIBBRATION DAMPER	1	14,3
21	400.00.10000-HCS50-2200	DRIVER SHAFT	1	65,92
22	400.00.10000-HCS50-2300	PRESS BUTTON	2	
23	400.00.10000-HCS50-2400	INSERT	2	
24	400.00.10000-HCS50-2500	INSERT	2	
25	400.00.10000-HCS50-2600	FLEX CAPS	1	5,75
26	400.00.10000-HCS50-2700	LOCK HANDLE	2	10,55
27	400.00.10000-HCS50-2800	ABSORBER CONNECT	1	45,2
28	400.00.10000-HCS50-2900	WAVE SPRING	2	0,55
29	400.00.10000-HCS50-3000	FLITCH	1	0
30	400.00.10000-W05-GX35T SDL	ENGINE	1	0
31	400.00.10000-W06-2S04-L990x1075	BRAKE CABLE	1	39,45
32	400.00.10000-W01-6202ZZ-J	BEARING	2	28,6
33	400.00.10000-W01-6201ZZ-J	BEARING	1	24
34	400.00.10000-HRT168-048354	GLOVES	2	21,15
35	400.00.10000-066-00004-80	SCRAM SWITCH	1	23,9
36	400.00.10000-WOD.W12-GB-2	WASHER	2	0,4
37	400.00.10000-CH.RG32	INTERNAL CIRCLIP	1	0,65
38	400.00.10000-CS.RG12	EXTERNAL CIRCLIP	1	0,4
39	400.00.10000-NUTSERT-M6X15-1	PULL RIVETING NUT	4	0,8
40	400.00.10000-HS.B-M6x20-8.8-GB-2	SCREW	4	0,35
41	400.00.10000-FN.W6-DIN-2	WASHER	16	0,35
42	400.00.10000-PAN.S-M4x6	PAN HEAD SCREW	2	0,35
43	400.00.10000-FN.B-M6x35-8.8-DIN-2	BOLT	1	0,35
44	400.00.10000-IN.N-M6-DIN-2	LOCK NUT	2	0,35

**400.00.10000 CODE SUPER SCREED****EURO**

<b>NO.</b>	<b>PART NO.</b>	<b>PART DESCRIPTION</b>	<b>QTY</b>	<b>REMARKS</b>
45	400.00.10000-FN.B-M6x20-8.8-DIN-2	BOLT	3	0,4
46	400.00.10000-HSPG.W6-DIN-2	SPRING WASHER,TANG ENDS	14	0,35
47	400.00.10000-HC.N-M6-DIN-2	CAP NUT	6	0,35
48	400.00.10000-SPG.W5-DIN-2	SPRING WASHER	1	0,3
49	400.00.10000-HS.B-M5x10-8.8-GB-1	SCREW	1	0,35
50	400.00.10000-HSPG.W12-DIN-2	SPRING WASHER,TANG ENDS	2	0,35
51	400.00.10000-HC.N-M12-DIN-2	CAP NUT	2	0,35
52	400.00.10000-HSPG.W8-DIN-2	SPRING WASHER,TANG ENDS	8	0,3
53	400.00.10000-HC.N-M8-DIN-2	CAP NUT	9	0,45
54	400.00.10000-FN.W8-DIN-2	WASHER	4	0,3
55	400.00.10000-FN.B-M6x30-8.8-DIN-2	BOLT	4	0,35
56	400.00.10000-SC.PIN-6x22-GB-3	SPRING PIN	2	8,4
57	400.00.10000-PAN.S-M4x10	PAN HEAD SCREW	1	0,35
58	400.00.10000-FN.W4-DIN-2	WASHER	1	0,55
59	400.00.10000-HC.N-M10-DIN-2	CAP NUT	1	7,8
60	400.00.10000-FNL.N-M10-DIN-2	HEXAGON THIN NU	1	0,4
61	400.00.10000-RAM70ND-060000	THROTTLE LEVER	1	33,65
62	400.00.10000-FHSS.S-M6x8-GB-3	SOCKET SCREW WITH FLAT HEAD	1	2,8
63	400.00.10000-W04-45x3	O-RING	1	3,9
64	400.00.10000-RAM70ND-060003	BOLT	1	16,25
65	400.00.10000-FHSS.S-M8x20-GB-3	SOCKET SCREW WITH FLAT HEAD	1	0,35
66	400.00.10000-RAM70ND-060004	SLIDER	1	9,7
67	400.00.10000-RAM70ND-060001	THROTTLE BODY	1	38,95
68	400.00.10000-RAM70ND-060002	THROTTLE GEAR	1	32,45
69	400.00.10000-FNL.N-M8-DIN-2	HEXAGON THIN NUT	2	0,4
70	400.00.10000-FN.W10-DIN-2	WASHER	2	0,3
71	400.00.10000-D4-MP-E	NAME PLATE	1	3,2
72	400.00.10000-IN.N-M12-DIN-2	LOCK NUT	2	0,7

NO.	PART NO.	PART DESCRIPTION	QTY	REMARKS
-----	----------	------------------	-----	---------



Design	C. C	Model	400.00.10000	Drawing no	400.00.10000
Checked		Description	CODE: SUPER SCREED		
Approved		Date	2014.12.15		





