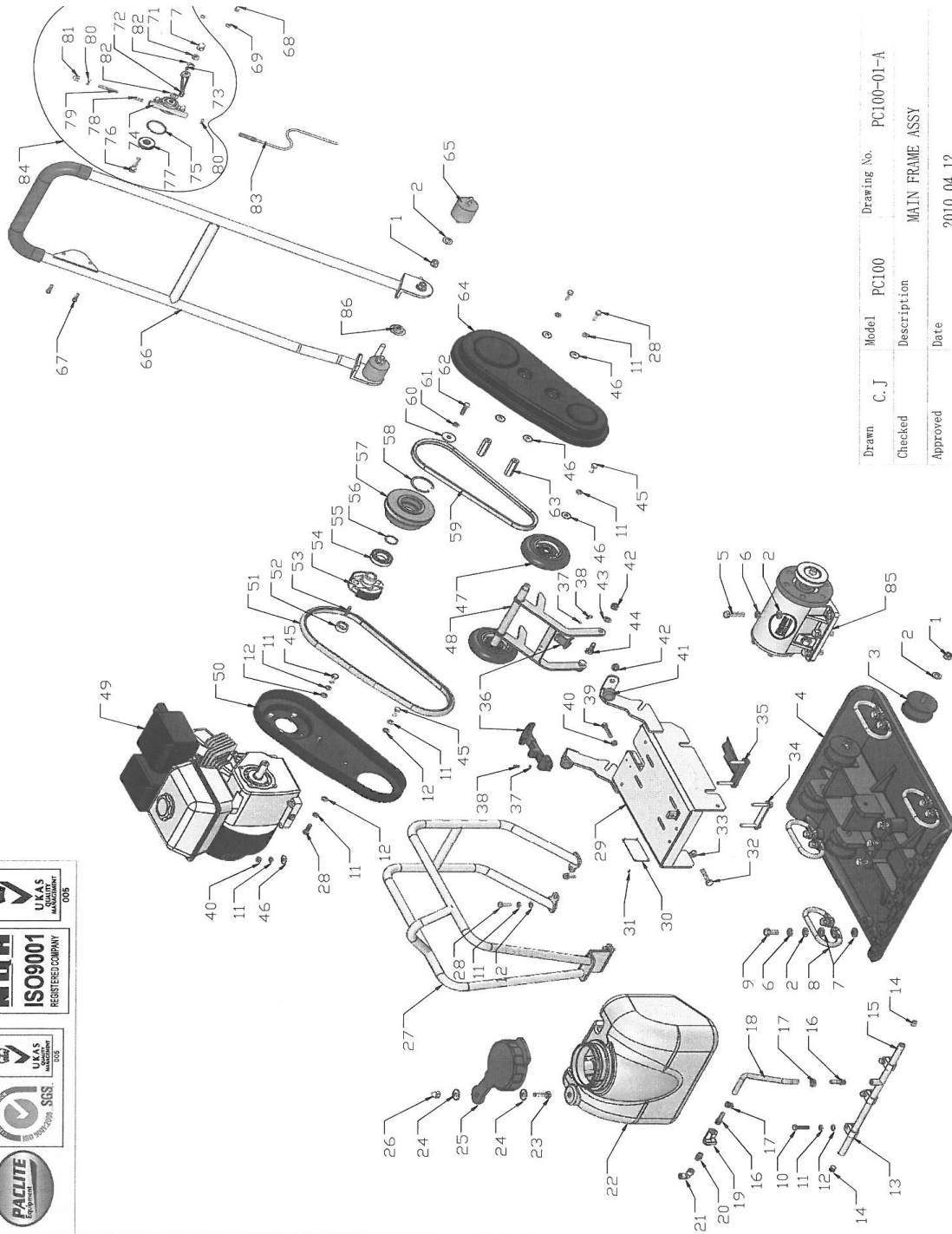
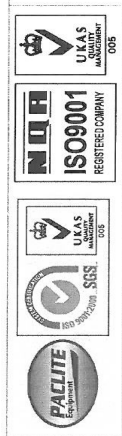


PC100-01-A MAIN FRAME ASSY

NO.	PART NO.	PART DESCRIPTION	QTY	UNIT PRICE (EUR) 2013
01-1	PC100-IN.N-M12-DIN-2	LOCK NUT	8	€ 0,12
01-2	PC100-FN.W12-DIN-1	WASHER	22	€ 0,08
01-3	PC100-90P-030800	SHOCK ABSORBER	4	€ 24,17
01-4	PC100-90P-010500	BASE PLATE	1	€ 272,43
01-5	PC100-FN.B-M12x45-12.9-DIN-1	BOLT	6	€ 0,76
01-6	PC100-HSPG.W12-DIN-1	SPRING WASHER,TANG ENDS	14	€ 0,08
01-7	PC100-90P-010600	RUBBER WASHER	16	€ 0,36
01-8	PC100-90P-010100	HANDLE	4	€ 7,90
01-9	PC100-FN.B-M12x25-8.8-DIN-1	BOLT	8	€ 0,18
01-10	PC100-FN.B-M8x35-8.8-DIN-1	BOLT	3	€ 0,12
01-11	PC100-HSPG.W8-DIN-1	SPRING WASHER,TANG ENDS	34	€ 0,08
01-12	PC100-FN.W8-DIN-1	WASHER	14	€ 0,08
01-13	PC100-90P-010901	HOOP	3	€ 14,80
01-14	PC100-HSHOS.B-ZG1-4	HEXAGONAL SOCKET HEAD PLUG	2	€ 0,96
01-15	PC100-90P-010800	SPRINKLING PIPE	1	€ 21,96
01-16	PC100-CPT-BT-1/4-10	HOSE NIPPLE	2	€ 1,69
01-17	PC100-90P-070006	HOSE CLAMP	2	€ 0,43
01-18	PC100-60W-010700	WATER PIPE	1	€ 0,83
01-19	PC100-QF-1/4-NI	VALVE	1	€ 8,51
01-20	PC100-CPT-BT-1/4	JOINT	1	€ 1,70
01-21	PC100-CPT-JT-ZG1/4	90° ELBOW	1	€ 2,33
01-22	PC100-90P-070000B	WATER TANK	1	€ 81,57
01-23	PC100-FN.B-M10x35-8.8-DIN-1	BOLT	13	€ 0,15
01-24	PC100-WOD.W10-GB-1	WASHER	2	€ 0,08
01-25	PC100-650-070200	WATER TANK CAP	1	€ 37,61
01-26	PC100-HC.N-M10-DIN-1	CAP NUT	1	€ 0,20
01-27	PC100-90P-100000	WATER TANK FRAME	1	€ 66,84
01-28	PC100-FN.B-M8x25-8.8-DIN-1	BOLT	8	€ 0,12
01-29	PC100-90P-090000	ENGINE BASE	1	€ 91,60
01-30	PC100-80-0409	NAMEPLATE	1	€ 1,01
01-31	PC100-K.RVT-3.2x7.1	RIVET	4	€ 0,14
01-32	PC100-FN.B-M10x45-8.8-DIN-1	BOLT	1	€ 0,15
01-33	PC100-FN.N-M10-DIN-1	NUT	1	€ 0,08
01-34	PC100-60-060200	BOLT	1	€ 1,54
01-35	PC100-90P-031000	FIX ENGINE BOLT	1	€ 12,44
01-36	PC100-500S-010505	BUCKLE	1SET	€ 6,93
01-37	PC100-SPG.W5-DIN-1	SPRING WASHER	4	€ 0,08
01-38	PC100-FN.B-M5x10-8.8-DIN-1	BOLT	4	€ 0,08
01-39	PC100-FN.B-M8x40-8.8-DIN-1	BOLT	2	€ 0,12
01-40	PC100-FN.N-M8-DIN-1	NUT	6	€ 0,08
01-41	PC100-80-0408	CUSHION	2	€ 3,76
01-42	PC100-IN.N-M10-DIN-1	LOCK NUT	4	€ 0,12

01-43	PC100-FN.W10-DIN-1	WASHER	2	€	0,08
01-44	PC100-FN.B-M10x25-8.8-DIN-1	BOLT	2	€	0,16
01-45	PC100-FN.B-M8x20-8.8-DIN-1	BOLT	7	€	0,08
01-46	PC100-WOD.W8-GB-1	WASHER	10	€	0,08
01-47	PC100-60W-040200	WHEEL	2	€	13,12
01-48	PC100-60W-040100	WHEEL FRAME	1	€	47,16
01-49	PC100-W05-GX160UT2-SWX2	ENGINE	1		
01-50	PC100-90P-040400	INNER BELT GUARD	1	€	43,08
01-51	PC100-90P-040600	SEAL	1	€	11,90
01-52	PC100-90P-031700	SPACER	1	€	16,46
01-53	PC100-Key.A-5x5x36	KEY	1	€	0,19
01-54	PC100-80-0500A	CENTRIFUGAL CLUTCH	1	€	55,39
01-55	PC100-W01-6006ZZ-J	BEARING	1	€	11,03
01-56	PC100-CS.RG30	EXTERNAL CIRCLIP	1	€	0,19
01-57	PC100-90P-031800	CLUTCH PULLEY	1	€	46,06
01-58	PC100-CH.RG55	INTERNAL CIRCLIP	1	€	0,55
01-59	PC100-W02-A33	V-BELT	1	€	11,93
01-60	PC100-100GB-070108	WASHER	1	€	1,54
01-61	PC100-HSPG.W8-DIN-2	SPRING WASHER,TANG ENDS	1	€	0,08
01-62	PC100-FN.B-M8x30-8.8-DIN-2	BOLT	1	€	0,12
01-63	PC100-90P-040300	CONNECTION POLE	2	€	3,40
01-64	PC100-90P-040500	OUTER BELT GUARD	1	€	43,08
01-65	PC100-90B-030100	HANDRAIL ABSORBER	2	€	21,68
01-66	PC100-90P-110000-C	HANDRAIL	1	€	46,93
01-67	PC100-FN.B-M6x20-8.8-DIN-2	BOLT	2	€	0,08
01-68	PC100-HC.N-M6-DIN-2	CAP NUT	2	€	0,08
01-69	PC100-HSPG.W6-DIN-2	SPRING WASHER,TANG ENDS	2	€	0,08
01-70	PC100-HC.N-M10-DIN-2	CAP NUT	1	€	0,27
01-71	PC100-FNL.N-M10-DIN-2	HEXAGON THIN NUT	1	€	0,12
01-72	PC100-70ND-060000	THROTTLE LEVER	1	€	18,20
01-73	PC100-FHSS.S-M6x8-GB-3	SOCKET SCREW WITH FLAT HEAD	1	€	0,12
01-74	PC100-70ND-060001	THROTTLE BODY	1	€	25,20
01-75	PC100-W04-45x3	O-RING	1	€	3,68
01-76	PC100-70ND-060003	BOLT	1	€	10,40
01-77	PC100-70ND-060002	THROTTLE GEAR	1	€	20,60
01-78	PC100-FHSS.S-M8x20-GB-3	SOCKET SCREW WITH FLAT HEAD	1	€	0,12
01-79	PC100-70ND-060004	SLIDER	1	€	6,04
01-80	PC100-FNL.N-M8-DIN-2	HEXAGON THIN NUT	2	€	0,08
01-81	PC100-HC.N-M8-DIN-2	CAP NUT	1	€	0,12
01-82	PC100-FN.W10-DIN-2	WASHER	2	€	0,08
01-83	PC100-W06-S04-L800x1000	THROTTLE CABLE	1	€	37,40
01-84	PC100-90P-70ND-010018	THROTTLE LEVER ASSY	1	€	63,77
01-85	PC100-02	EXCITER HOUSING ASSY	1SET	€	355,78
01-86	PC100-60-010300.3	NYLON BUSH	2	€	4,20

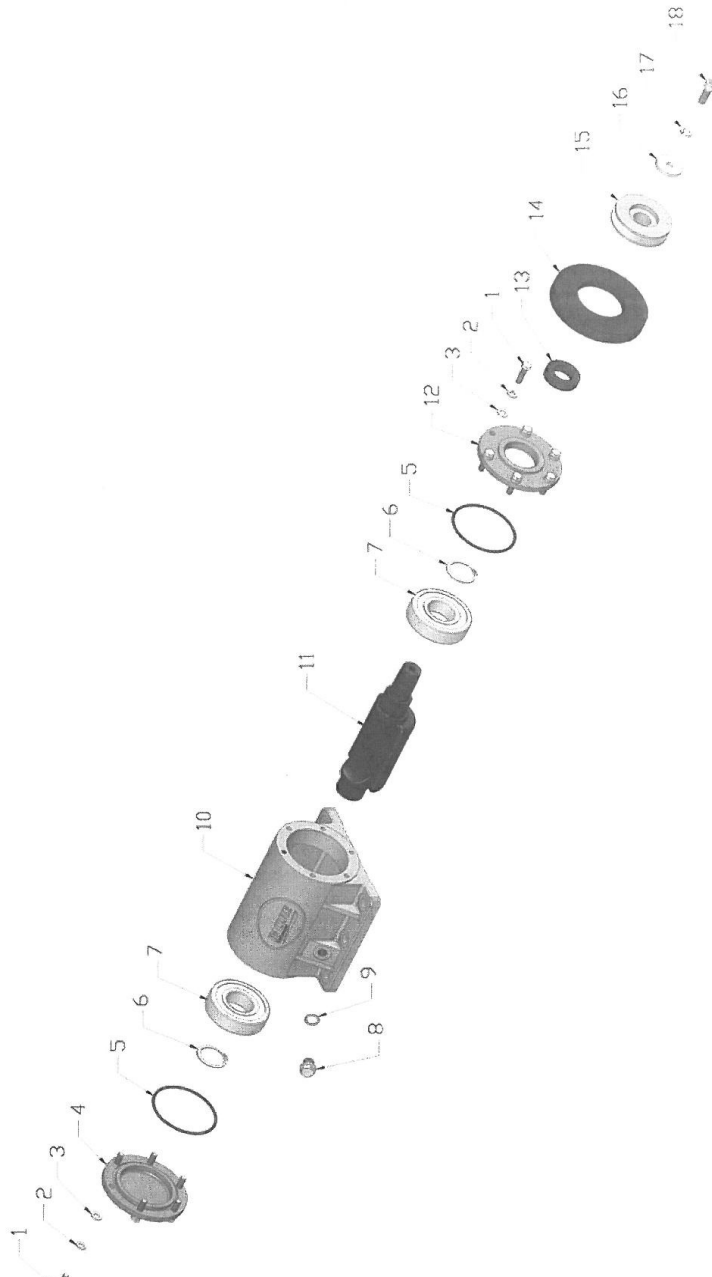


Drawn	C. J	Model	PC100	Drawing No.	PC100-01-A
Checked		Description	MAIN FRAME ASSY		
Approved		Date			2010. 04. 12

PC100-02 EXCITER HOUSING ASSY.

NO.	PART NO.	PART DESCRIPTION	QTY	UNIT PRICE (EURO) 2013
02-1	PC100-FN.B-M8x30-8.8-DIN-1	BOLT	12	€ 0,12
02-2	PC100-HSPG.W8-DIN-1	SPRING WASHER,TANG ENDS	12	€ 0,08
02-3	PC100-FN.W8-DIN-2	WASHER	12	€ 0,08
02-4	PC100-90P-020400	CLOSE COVER	1	€ 13,69
02-5	PC100-W04-90x3.5	O RING	2	€ 0,78
02-6	PC100-CS.RG40	EXTERNAL CIRCLIP	2	€ 0,20

02-7	PC100-W01-6308ZZC3E-J	BEARING	2	€	32,87
02-8	PC100-HHOS.B-M14x1.5	HEXAGON HEAD PLUG	1	€	1,05
02-9	PC100-GB97.1-M14	CUPRUM WASHER	1	€	0,24
02-10	PC100-90P-020100P	EXCITER HOUSING	1	€	192,31
02-11	PC100-90P-020200A	EXCITER SHAFT	1	€	82,05
02-12	PC100-90P-020300	COVER	1	€	19,87
02-13	PC100-W03-50x30x12	OIL SEAL	1	€	1,10
02-14	PC100-90P-020500	COVER GUARD	1	€	15,60
02-15	PC100-90P-031900	EXCITER PULLEY	1	€	29,45
02-16	PC100-80-0303	PULLEY WASHER	1	€	1,10
02-17	PC100-HSPG.W10-DIN-1	SPRING WASHER,TANG ENDS	1	€	0,08
02-18	PC100-90B-010800	VENT SCREW	1	€	0,56



Drawn	C. J	Model	PC90	Drawing No.	PC100-02
Checked		Description	EXCITING HOUSING ASSY		
Approved		Date	2010. 04. 12		

