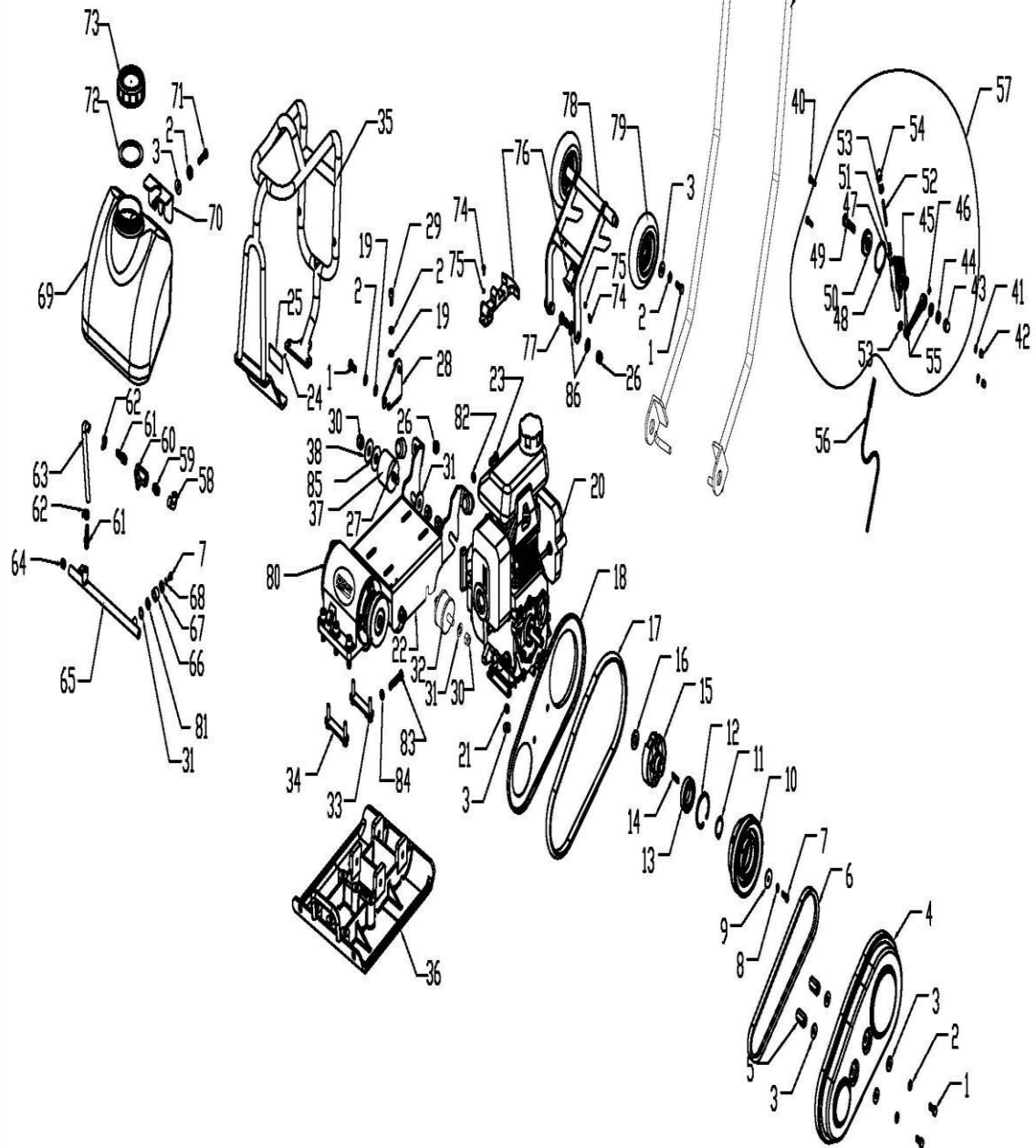


LCC40W-01-D MAIN FRAME ASSY.

NO.	PART NO.	PART DESCRIPTION.	QTY	UNIT PRICE EUR & USD 2015
01-1	LCC40W-FN.B-M8x20-8.8-DIN-1	BOLT	4	0,18
01-2	LCC40W-HSPG.W8-DIN-1	SPRING WASHER,TANG ENDS	10	0,18
01-3	LCC40W-WOD.W8-GB-1	WASHER	10	0,18
01-4	LCC40W-40-040000	OUTER BELT GUARD	1	32,46
01-5	LCC40W-40-040200	CONNECTION POLE	2	2,48
01-6	LCC40W-W02-A30	V-BELT	1	22,86
01-7	LCC40W-FN.B-M6x20-8.8-DIN-1	BOLT	3	0,18
01-8	LCC40W-HSPG.W6-DIN-1	SPRING WASHER,TANG ENDS	1	0,18
01-9	LCC40W-40-070200	GASKET	1	2,90
01-10	LCC40W-90P-031800	CLUTCH PULLEY	1	52,99
01-11	LCC40W-CS.RG30	EXTERNAL CIRCLIP	3	0,32
01-12	LCC40W-CH.RG55	INTERNAL CIRCLIP	1	0,69
01-13	LCC40W-W01-6006ZZ-J	BEARING	1	54,41
01-14	LCC40W-Key.A-5x5x30	KEY	1	6,90
01-15	LCC40W-80-0500D	CENTRIFUGAL CLUTCH	1	38,59
01-16	LCC40W-40-070100	GASKET	1	2,02
01-17	LCC40W-40-040103	SEAL	1	5,43
01-18	LCC40W-40-040100	INNER BELT GUARD	1	30,22
01-19	LCC40W-FN.W8-DIN-1	WASHER	4	0,14
01-20	LCC40W-W05-GX100U-SE14	ENGINE	1	
01-21	LCC40W-IN.N-M8-DIN-1	NUT	4	0,23
01-22	LCC40W-400400	BASE FRAME	1	67,41
01-23	LCC40W-FN.B-M10x25-8.8-DIN-1	BOLT	1	0,32
01-24	LCC40W-K.RVT-3.2x7.1	RIVET	4	7,91
01-25	LCC40W-80-0409	NAMEPLATE	1	0,97
01-26	LCC40W-IN.N-M10-DIN-1	LOCK NUT	4	0,28
01-27	LCC40W-80-0408	CUSHION	2	4,32
01-28	LCC40W-100400	BRACKET	1	15,13
01-29	LCC40W-HS.B-M8x16-8.8-GB-1	SCREW	2	0,23
01-30	LCC40W-IN.N-M12-DIN-1	LOCK NUT	8	0,37
01-31	LCC40W-FN.W12-DIN-1	WASHER	6	1,06
01-32	LCC40W-40-060100	RUBBER ABSORBER	4	87,70
01-33	LCC40W-40-030800-B	BOLT	1	8,19
01-34	LCC40W-40-030900-B	BOLT	1	8,14
01-35	LCC40W-100200-A	GUARD HOOK	1	141,42
01-36	LCC40W-020000	BASE PLATE	1	122,34
01-37	LCC40W-90B-030100	HANDRAIL ABSORBER	2	10,35
01-38	LCC40W-WOD.W12-GB-1	WASHER	2	0,51
01-39	LCC40W-300300	HANDRAIL	1	69,55
01-40	LCC40W-FN.B-M6x20-8.8-DIN-2	BOLT	2	0,18
01-41	LCC40W-HSPG.W6-DIN-2	SPRING WASHER,TANG ENDS	2	0,18
01-42	LCC40W-HC.N-M6-DIN-2	CAP NUT	2	3,04
01-43	LCC40W-HC.N-M10-DIN-2	CAP NUT	1	4,60
01-44	LCC40W-FNL.N-M10-DIN-2	HEXAGON THIN NUT	1	0,23
01-45	LCC40W-70ND-060000	THROTTLE LEVER	1	1,20
01-46	LCC40W-FHSS.S-M6x8-GB-3	SOCKET SCREW WITH FLAT HEAD	1	0,14
01-47	LCC40W-70ND-060001	THROTTLE BODY	1	3,45
01-48	LCC40W-W04-45x3	O-RING	1	0,74
01-49	LCC40W-70ND-060003	BOLT	1	0,60
01-50	LCC40W-70ND-060002	THROTTLE GEAR	1	1,75
01-51	LCC40W-FHSS.S-M8x20-GB-3	SOCKET SCREW WITH FLAT HEAD	1	0,18

01-52	LCC40W-70ND-060004	SLIDER	1	0,41
01-53	LCC40W-FNL.N-M8-DIN-2	HEXAGON THIN NUT	2	0,18
01-54	LCC40W-HC.N-M8-DIN-2	CAP NUT	1	0,37
01-55	LCC40W-FN.W10-DIN-2	WASHER	2	0,18
01-56	LCC40W-350-032600	THROTTLE CABLE	1	11,87
01-57	LCC40W-70ND-010018	THROTTLE LEVER ASSY	1	15,23
01-58	LCC40W-JT-ZG1/4	90° ELBOW	1	8,65
01-59	LCC40W-BT-1/4	JOINT	1	6,35
01-60	LCC40W-QF-1/4-NI	VALVE	1	12,88
01-61	LCC40W-BT-1/4-10	HOSE NIPPLE	2	8,83
01-62	LCC40W-90P-070006	HOSE CLAMP	2	0,46
01-63	LCC40W-100500	HOSE	1	0,14
01-64	LCC40W-HSHOS.B-ZG1/4	HEXAGONAL SOCKET HEAD PLUG	2	1,06
01-65	LCC40W-100100-B	SPRINKLING PIPE	1	30,91
01-66	LCC40W-100300	HEEL	2	5,93
01-67	LCC40W-WOD.W6-GB-1	WASHER	2	1,47
01-68	LCC40W-SPG.W6-DIN-1	SPRING WASHER	2	0,18
01-69	LCC40W-90P-070000	WATER TANK	1	27,05
01-70	LCC40W-90P-050300	WATER TANK CLIP	1	5,52
01-71	LCC40W-FN.B-M8x35-8.8-DIN-1	BOLT	2	0,23
01-72	LCC40W-6.5-070109	SEAL, WATER TANK COVER	1	0,28
01-73	LCC40W-6.5-070108	WATER TANK CAP	1	1,15
01-74	LCC40W-FN.B-M5x10-8.8-DIN-1	BOLT	2	0,18
01-75	LCC40W-SPG.W5-DIN-1	SPRING WASHER	4	0,18
01-76	LCC40W-500S-010505	BUCKLE	1	8,79
01-77	LCC40W-FN.B-M10x25-8.8-DIN-1	BOLT	2	0,28
01-78	LCC40W-200200	WHEEL FRAME	1	29,67
01-79	LCC40W-60W-040200	WHEEL	2	8,05
01-80	LCC40W-02	EXCITER ASSY	1	128,77
01-81	LCC40W-90P-010600	RUBBER WASHER	2	0,37
01-82	LCC40W-FNL.N-M10-DIN-1	NUT	2	0,23
01-83	LCC40W-FN.B-M8x50-8.8-DIN-1	BOLT	2	0,32
01-84	LCC40W-FN.N-M8-DIN-1	NUT	2	0,18
01-85	LCC40W-60W-010300.3	NYLON WASHER	2	4,83
01-86	LCC40W-FN.W10-DIN-1	WASHER	4	0,18



Drawn	CXH	Model	LCC40W	Drawing No.	LCC40W-01-D
Checked		Description	MAIN FRAME ASSY		
Approved		Date	2013.05.22		

LCC40W-02-A EXCITER ASSY.

NO.	PART NO.	PART DESCRIPTION	QTY	UNIT PRICE EUR & USD 2015
02-1	LCC40W-FN.B-M8x30-8.8-DIN-1	BOLT	8	0,23
02-2	LCC40W-HSPG.W8-DIN-1	SPRING WASHER,TANG ENDS	8	0,18
02-3	LCC40W-FN.W8-DIN-1	WASHER	8	0,14
02-4	LCC40W-40-010300	COVER	1	12,10
02-5	LCC40W-W04-72x3.5	O RING	2	4,14
02-6	LCC40W-W01-6306ZZ-J	BEARING	2	26,73
02-7	LCC40W-CS.RG30	EXTERNAL CIRCLIP	2	0,32
02-8	LCC40W-HHOS.B-M14x1.5	HEXAGON HEAD PLUG	1	1,75
02-9	LCC40W-FN.W12-DIN-1	WASHER	6	1,06
02-10	LCC40W-HSPG.W12-DIN-1	SPRING WASHER,TANG ENDS	6	0,14
02-11	LCC40W-HS.B-M12x40-12.9-GB-3	BOLT	6	0,37
02-12	LCC40W-40-010200-P	EXCITER HOUSING	1	89,91
02-13	LCC40W-40-010100E	EXITING SHAFT	1	27,74
02-14	LCC40W-40-010400	COVER	1	10,35
02-15	LCC40W-W03-55x30x10	OIL SEAL	1	4,69
02-16	LCC40W-40-060200	EXCITER PULLEY	1	25,99
02-17	LCC40W-80-0303	PULLEY WASHER	1	2,35
02-18	LCC40W-HSPG.W10-DIN-1	SPRING WASHER,TANG ENDS	1	0,18
02-19	LCC40W-90B-010800	VENT SCREW	1	0,64

