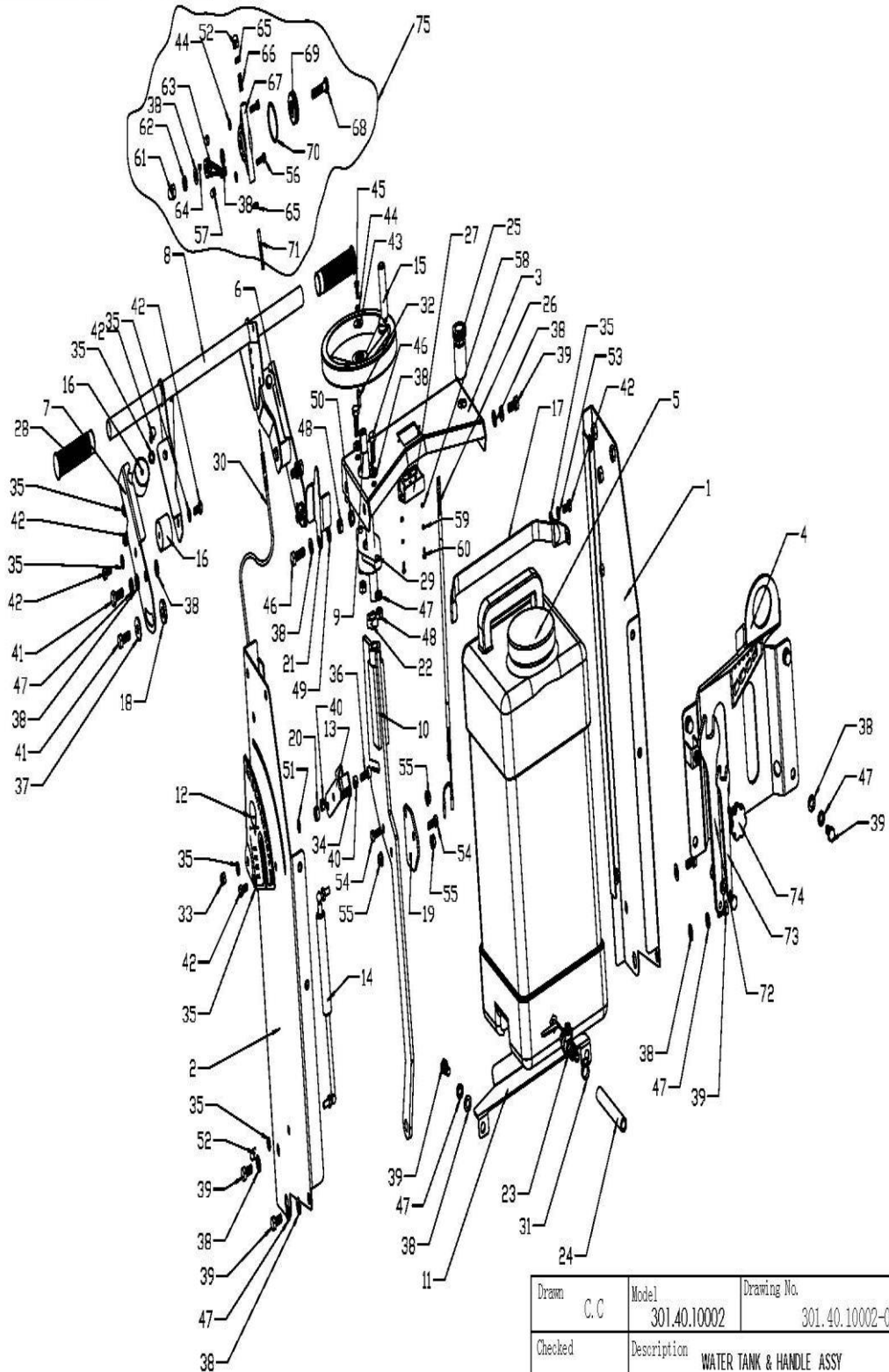


301.40.10002-01 WATER TANK & HANDLE ASSY

NO.	PART NO.	PART DESCRIPTION	QTY	Unit Price EUR/USD 2016
01-1	301.40.10002-HCC18-010100	LEFT BEZEL	1	95,13
01-2	301.40.10002-HCC18-010200	RIGHT	1	101,97
01-3	301.40.10002-HCC18-010300	OPERATION PANEL	1	58,23
01-4	301.40.10002-HCC18-010400	BEZEL	1	128,28
01-5	301.40.10002-HCC18-010500	WATER TANK	1	145,71
01-6	301.40.10002-HCC18-010600	LEFT BRACKET	1	22,32
01-7	301.40.10002-HCC18-010700	RIGHT BRACKET	1	22,32
01-8	301.40.10002-HCC18-010800	HANDRAIL	1	63,39
01-9	301.40.10002-HCC18-010900	SCREW SHAFT	1	59,79
01-10	301.40.10002-HCC18-011000	LIFTING FRAME	1	93,15
01-11	301.40.10002-HCC18-011100	WATER TANK FRAME	1	31,76
01-12	301.40.10002-HCC18-011300	SCALE PLATE	1	42,72
01-13	301.40.10002-HCC18-011400	POINTER	1	10,84
01-14	301.40.10002-HCC18-011500	Gas Spring	1	
01-15	301.40.10002-HCC18-011600	Handwheel	1	48,00
01-16	301.40.10002-HCC18-011700	DAMPING BLOCK	4	63,00
01-17	301.40.10002-HCC18-011800	TANK STRAPS	1	28,92
01-18	301.40.10002-HCC18-011900	GASKET	2	4,96
01-19	301.40.10002-HCC18-012000	PLATE	1	9,68
01-20	301.40.10002-HCC18-012100	GASKET	1	6,12
01-21	301.40.10002-HCC18-012200	STOPPER PLATE	1	9,00
01-22	301.40.10002-HCC18-012300	LOCKNUT	1	7,00
01-23	301.40.10002-HCC18-012400	VALVE	1	18,56
01-24	301.40.10002-16-050304	HOSE	1	
01-25	301.40.10002-20A-020210	STOP SWITCH	1	41,04
01-26	301.40.10002-20A-021000	WIRE	1	28,36
01-27	301.40.10002-20A-020208	TACHOMETER	1	86,40
01-28	301.40.10002-HRT168-048354	HANDLE COVER	2	13,68
01-29	301.40.10002-W01-UCFL204-G	BEARING	1	28,92
01-30	301.40.10002-W06-S04-L800x1000	DRIVE LINE	1	32,25
01-31	301.40.10002-CPT90P-070006	Hose Clamp	1	1,84
01-32	301.40.10002-Key.C-6x6x22	FLAT KEY	1	0,48
01-33	301.40.10002-IN.N-M8-DIN-2	LOCK NUT	1	0,20
01-34	301.40.10002-FN.B-M8x30-8.8-DIN-2	BOLT	1	0,32
01-35	301.40.10002-FN.W8-DIN-2	WASHER	12	0,20
01-36	301.40.10002-HS.B-M8x20-8.8-GB-2	SCREW	1	0,36
01-37	301.40.10002-WOD.W10-GB-2	WASHER	2	0,24
01-38	301.40.10002-FN.W10-DIN-2	WASHER	24	0,12
01-39	301.40.10002-FN.B-M10x20-8.8-DIN-2	BOLT	11	0,24
01-40	301.40.10002-FN.N-M8-DIN-2	NUT	2	0,24
01-41	301.40.10002-FN.B-M10x25-8.8-DIN-2	BOLT	8	0,24

01-42	301.40.10002-FN.B-M8x16-8.8-DIN-2	BOLT	10	0,28
01-43	301.40.10002-WOD.W8-GB-2	WASHER	1	0,24
01-44	301.40.10002-HSPG.W6-DIN-2	SPRING WASHER,TANG ENDS	3	0,20
01-45	301.40.10002-FN.B-M6x16-8.8-DIN-2	BOLT	1	0,20
01-46	301.40.10002-FN.B-M10x30-8.8-DIN-2	BOLT	3	0,24
01-47	301.40.10002-HSPG.W10-DIN-2	SPRING WASHER,TANG ENDS	15	0,12
01-48	301.40.10002-FN.N-M10-DIN-2	NUT	3	0,24
01-49	301.40.10002-DSPG.W10-DIN-3	WASHER	1	0,60
01-50	301.40.10002-IN.N-M10-DIN-2	LOCK NUT	1	0,24
01-51	301.40.10002-DSPG.W8-DIN-3	WASHER	1	0,68
01-52	301.40.10002-HC.N-M8-DIN-2	CAP NUT	2	0,32
01-53	301.40.10002-HSPG.W8-DIN-2	SPRING WASHER,TANG ENDS	1	0,20
01-54	301.40.10002-FN.B-M8x20-8.8-DIN-2	BOLT	2	0,28
01-55	301.40.10002-HF.N-M8-DIN-2	FLANGE NUTSF	3	0,24
01-56	301.40.10002-FN.B-M6x20-8.8-DIN-2	BOLT	2	0,24
01-57	301.40.10002-HC.N-M6-DIN-2	CAP NUT	2	0,24
01-58	301.40.10002-FN.W4-DIN-2	WASHER	2	0,20
01-59	301.40.10002-SPG.W4-DIN-2	SPRING WASHER	2	0,20
01-60	301.40.10002-PAN.S-M4x10-GB-2	PAN HEAD SCREW	2	0,24
01-61	301.40.10002-HC.N-M10-DIN-2	CAP NUT	1	0,32
01-62	301.40.10002-FNL.N-M10-DIN-2	HEXAGON THIN NUT	1	0,28
01-63	301.40.10002-70ND-060000	THROTTLE LEVER	1	22,48
01-64	301.40.10002--FHSS.S-M6x8-GB-3	SOCKET SCREW WITH FLAT HEAD	1	0,24
01-65	301.40.10002-FNL.N-M8-DIN-2	HEXAGON THIN NUT	2	0,24
01-66	301.40.10002-FHSS.S-M8x20-GB-3	SOCKET SCREW WITH FLAT HEAD	1	2,52
01-67	301.40.10002-70ND-060001	THROTTLE BODY	1	31,20
01-68	301.40.10002-70ND-060003	BOLT	1	1,40
01-69	301.40.10002-70ND-060002	THROTTLE GEAR	1	25,44
01-70	301.40.10002-W04-45x3	O-RING	1	4,56
01-71	301.40.10002-70ND-060004	SLIDER	1	7,48
01-72	301.40.10002-20A-021200	SPANNER	1	33,06
01-73	301.40.10002-HCC18-012500	SPANNER	1	
01-74	301.40.10002-StarH-M8x30	STAR GRIP KNOB	1	
01-75	301.40.10002-70ND-010018	THROTTLE LEVER ASSY	1	77,94

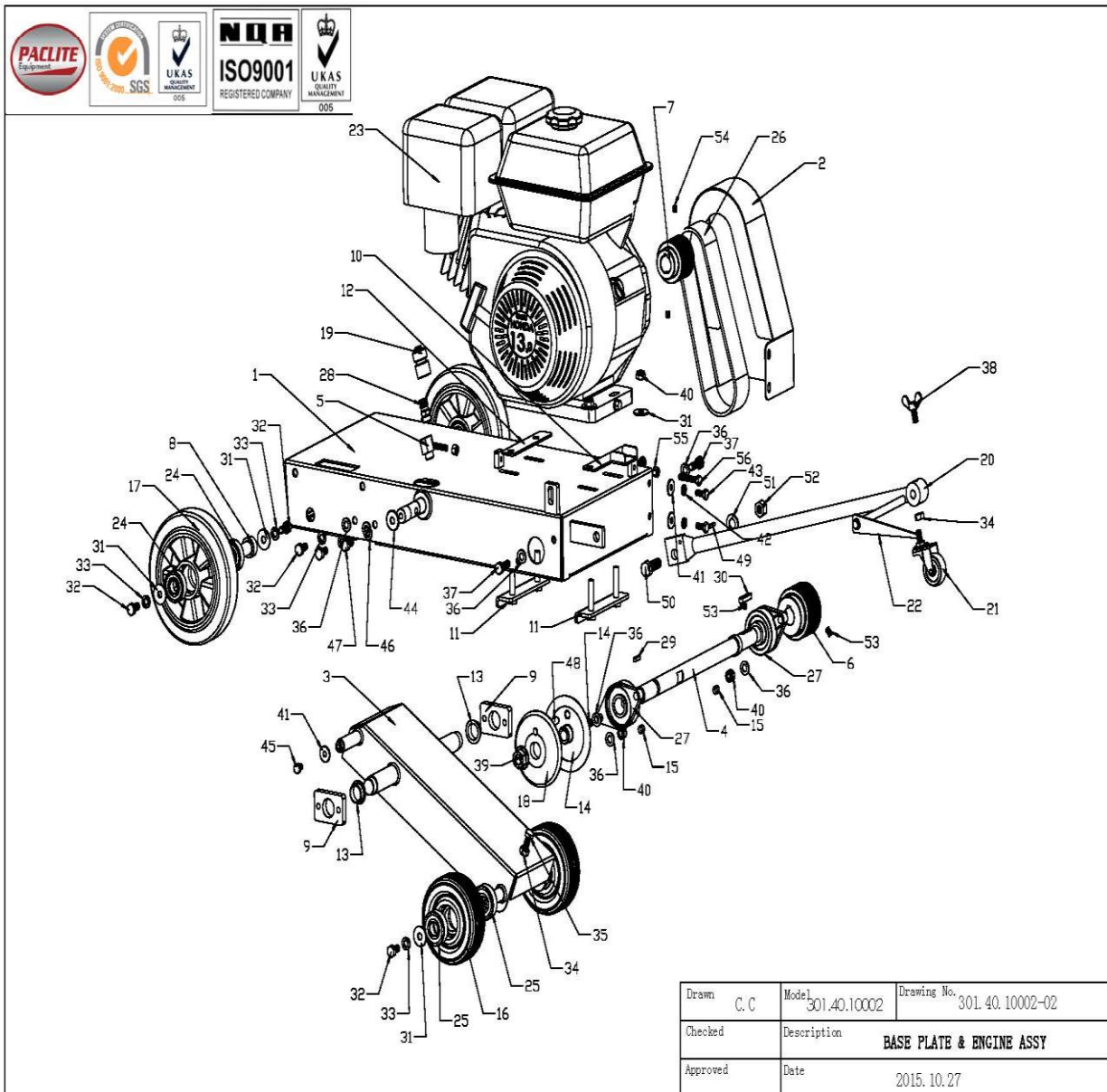


Drawn	C. C	Model	301.40.10002	Drawing No.	301.40.10002-01
Checked		Description	WATER TANK & HANDLE ASSY		
Approved		Date	2015. 10. 26		

301.40.10002-02 BASE PLATE & ENGINE ASSY

NO.	PART NO.	PART DESCRIPTION	QTY	Unit Price EUR/USD 2016
02-1	301.40.10002-020100	ENGNIE BASE	1	212,68
02-2	301.40.10002-020201	BELT COVER	1	54,81
02-3	301.40.10002-020300	WHEEL BRACKET	1	147,90
02-4	301.40.10002-020400	BLADE SHAFT	1	103,83
02-5	301.40.10002-020500	CHANGE FITTINGS	1	21,60
02-6	301.40.10002-020600	DRIVEN PULLEY	1	137,64
02-7	301.40.10002-020700	P.T.O PULLEY	1	96,72
02-8	301.40.10002-020800	WHEEL AXIS	2	32,82
02-9	301.40.10002-020900	SUPPORTS	2	28,08
02-10	301.40.10002-021000	DRAIN BOARD	1	11,08
02-11	301.40.10002-021100	FIXING PLATES	2	28,12
02-12	301.40.10002-021200	MAT BOARD	1	8,40
02-13	301.40.10002-021300	FLANGE BEARINGS	2	10,96
02-14	301.40.10002-021400	BLADE FIXER	1	79,74
02-15	301.40.10002-021500	FIXED SET	4	3,24
02-16	301.40.10002-20-050400	FRONT WHEEL	2	71,70
02-17	301.40.10002-20A-010500	REAR WHEEL	2	119,61
02-18	301.40.10002-20A-010411	BLADE FIXER	1	55,50
02-19	301.40.10002-20A-030412	SPDDE TIE-IN	1	17,60
02-20	301.40.10002-20-010100	LEADING POLE	1	37,05
02-21	301.40.10002-20-010006	MYRIAD WHEEL	1	26,12
02-22	301.40.10002-20-010200	POINTER	1	2,24
02-23	301.40.10002-W05-GX390-S	ENGINE	1	
02-24	301.40.10002-W01-6204ZZ-G	BEARING	4	4,24
02-25	301.40.10002-W01-6304ZZ-G	BEARING	4	7,40
02-26	301.40.10002-W02-12PK648	BELT	1	30,27
02-27	301.40.10002-W01-UCFL205-J	BEARING	2	144,65
02-28	301.40.10002-KSJT-G3 / 8-16	HOSE NIPPLE	1	20,20
02-29	301.40.10002-Key.A-5x5x22	KEY	1	4,88
02-30	301.40.10002-Key.A-8x7x40	KEY	1	4,80
02-31	301.40.10002-WOD.W10-GB-2	WASHER	10	0,24
02-32	301.40.10002-FN.B-M10x20-8.8-DIN-2	BOLT	10	0,24
02-33	301.40.10002-HSPG.W10-DIN-2	SPRING WASHER,TANG ENDS	10	0,12
02-34	301.40.10002-FN.N-M10-DIN-2	NUT	2	0,24
02-35	301.40.10002-FN.B-M10x50-8.8-DIN-2	BOLT	1	0,32
02-36	301.40.10002-FN.W10-DIN-2	WASHER	12	0,12
02-37	301.40.10002-FN.B-M10x30-8.8-DIN-2	BOLT	4	0,24
02-38	301.40.10002-WNG.B-M10x20	BUTTERFLY BOLT	1	3,44
02-39	301.40.10002-HF.N-M16L-DIN-3	HEXAGON FLANGE NUT	1	1,28
02-40	301.40.10002-IN.N-M10-DIN-2	LOCK NUT	8	0,24
02-41	301.40.10002-WOD.W8-GB-2	WASHER	4	0,24

02-42	301.40.10002-HSPG.W8-DIN-2	SPRING WASHER,TANG ENDS	3	0,20
02-43	301.40.10002-FN.B-M8x20-8.8-DIN-2	BOLT	3	0,28
02-44	301.40.10002-WOD.W10-GB-1	WASHER	1	0,24
02-45	301.40.10002-FN.B-M8x12-8.8-DIN-2	BOLT	1	0,24
02-46	301.40.10002-HSPG.W10-DIN-1	SPRING WASHER,TANG ENDS	1	0,12
02-47	301.40.10002-FN.B-M10x20-8.8-DIN-1	BOLT	1	0,24
02-48	301.40.10002-ST.PIN-10x30	Cylindrical pin	1	0,68
02-49	301.40.10002-SC.PIN-5x20-GB-3	SPRING PIN	1	0,36
02-50	301.40.10002-FN.B-M14x40-8.8-DIN-2	BOLT	1	0,68
02-51	301.40.10002-FN.W14-DIN-2	WASHER	1	0,60
02-52	301.40.10002-FN.N-M14-DIN-2	NUT	1	0,44
02-53	301.40.10002-FHSS.S-M8x12-GB-3	GRUB SCREW	2	0,24
02-54	301.40.10002-FHSS.S-M8x8-GB-3	GRUB SCREW	2	0,24
02-55	301.40.10002-FN.N-M8-DIN-2	NUT	2	0,24
02-56	301.40.10002-FN.B-M8x45-8.8-DIN-2	BOLT	2	0,24



Drawn	C. C	Model	301.40.10002	Drawing No.	301.40.10002-02
Checked		Description	BASE PLATE & ENGINE ASSY		
Approved		Date	2015.10.27		

301.40.10002-03 BLADE COVER ASSY

NO.	PART NO.	PART DESCRIPTION	QTY	Unit Price EUR/USD 2016
04-1	301.40.10002-030100	BLADE COVER	1	203,00
04-2	301.40.10002-030200	COPPER SETS	2	34,59
04-3	301.40.10002-030300	SPACER	1	24,52
04-4	301.40.10002HCC16-000005	DUST JACKET	1	6,24
04-5	301.40.10002-W03-40x22x7	OIL SEAL	2	4,88
04-6	301.40.10002-FN.W8-DIN-2	WASHER	4	0,20
04-7	301.40.10002-FN.B-M8x20-8.8-DIN-2	BOLT	2	0,28
04-8	301.40.10002-IN.N-M8-DIN-2	LOCK NUT	2	0,20
04-9	301.40.10002-FHSS.S-M8x12-GB-3	GRUB SCREW	2	0,24
04-10	301.40.10002-HCC18-WNG.B-M10x20	BUTTERFLY BOLT	1	3,44
04-11	301.40.10002-WOD.W10-GB-2	LARGE WASHER	1	0,24

